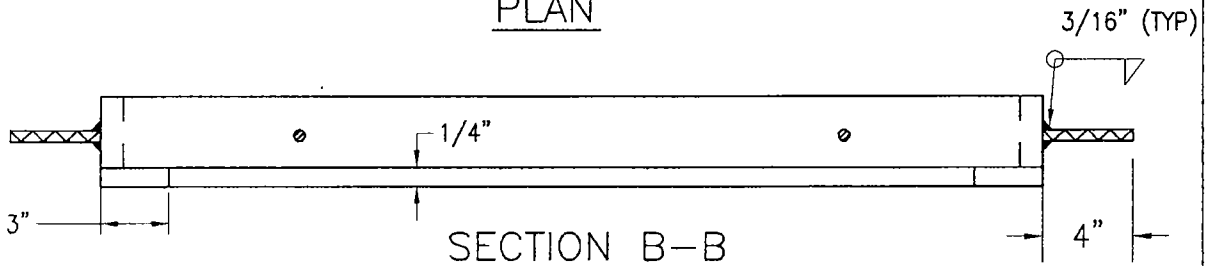
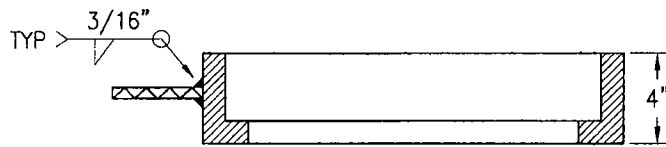


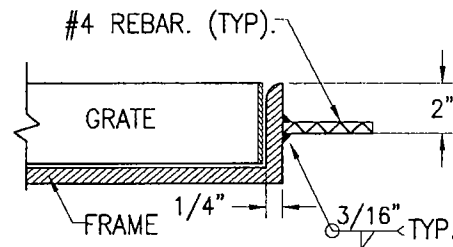
PLAN



SECTION B-B



SECTION A-A



FRAME ANCHOR DETAIL

NOTES:

1. OMIT 1/2" FRAME ANCHORS OVER CENTER SUPPORT ASSEMBLY WHEN MULTIPLE FRAMES ARE USED.
2. MATERIAL: ASTM A36 MILD STEEL.
3. SEE ARTICLE 50-34, "SEWER AND STORM DRAIN CASTINGS," OF SECTION 50.
4. EXPOSED SURFACES OF THE GRATES, FRAMES AND HOODS WITH THE PARTS ASSEMBLED AND DISASSEMBLED SHALL BE PAINTED WITH COMMERCIAL QUALITY ASPHALTUM PAINT AFTER TESTING AND ASSEMBLY.

Keith DeWane
DIRECTOR, DEPARTMENT OF WATER RESOURCES

SACRAMENTO COUNTY
MUNICIPAL SERVICES AGENCY

**WELDED STEEL
GRATE FRAME**

DRAWN BY: L. PETERS
SCALE: NONE
DATE: 04/07

9-14