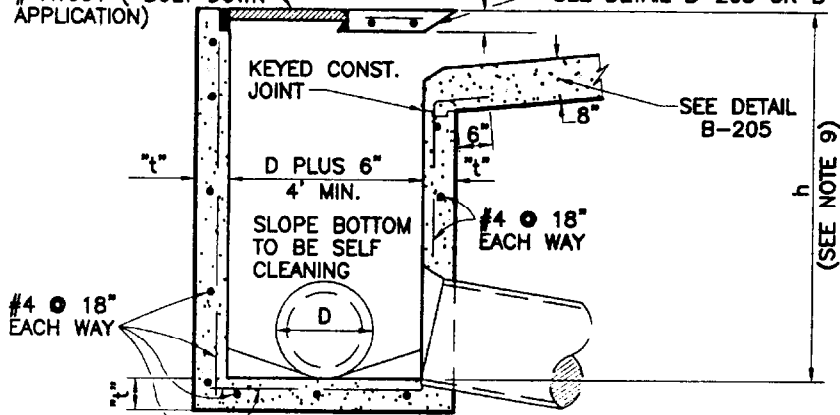


ALHAMBRA FOUNDRY  
24" FRAME & COVER  
# A1531 ( BOLT DOWN  
APPLICATION)

SEE DETAIL B-203 OR B-204



h	"t"
UP TO 8'-0"	6"
UP TO 16'-0"	8"

(SEE NOTE 9)

### SECTION A-A

### NOTES:

1. HORIZONTAL PROTECTION BAR SHALL BE USED WHEN INLET OPENING IS MORE THAN 8 INCHES. SEE STD. PLAN B-203 OR B-204 FOR DETAILS.
2. STEPS REQUIRED WHEN "h" IS GREATER THAN 3'-0". SEE STD. B-203.
3. OUTLET MAY BE MADE IN ANY DIRECTION.
4. PIPE INLETS AND OUTLETS SHALL BE AT BOTTOM OF BASIN UNLESS OTHERWISE SPECIFIED.
5. ALL EXPOSED CONCRETE SURFACES SHALL CONFORM IN GRADE, COLOR AND FINISH TO ALL ADJOINING CURB AND WALK.
6. ALL WALL AND BASE REINFORCING STEEL SHALL BE 1 1/2 INCHES CLEAR FROM INSIDE OR OUTSIDE FACE OF STRUCTURE.
7. WHEN "w" EXCEEDS 8 FEET, USE STD. PLAN B-202.
8. ALL CONCRETE SHALL BE CLASS "A" (6 SACK WITH 3/4" AGGREGATE).
9. "h" SHALL BE 4' MIN. FOR MAINTENANCE PURPOSES IF POSSIBLE.
10. SLOPE BOTTOM OF CATCH BASIN TOWARDS OUTLET A MIN. OF 1" PER FOOT FROM ALL SIDES.



City of  
Garden Grove  
California

## CATCH BASIN - TYPE OS (CURB OPENING - SMALL)

Approved

Date

*[Signature]* 4/2/66

REVISIONS

BY

DATE

STD. PLAN NUMBER

City Engineer

R.C.E. 50353

Exp. 06-30-09

**B-201**