

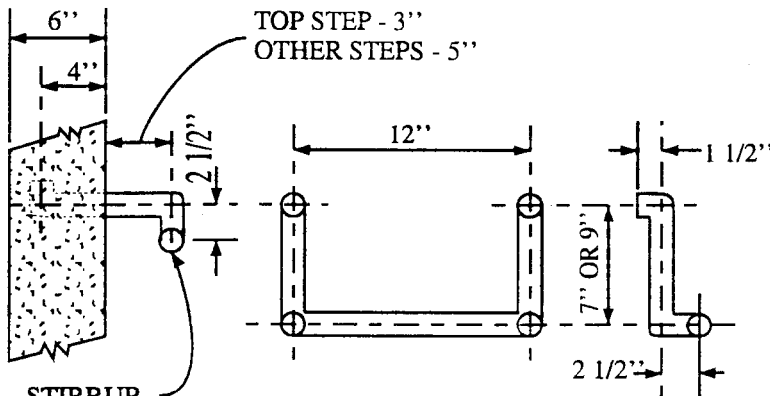
PLAN

WHEN BROKEN END OF PIPE IS WITHIN MANHOLE, BREAK THE PIPE FLUSH WITH INSIDE OF MANHOLE WALL AND PLASTER BROKEN EDGES SMOOTH. WHEN UNBROKEN END OF PIPE IS IN MANHOLE, LEAVE SQUARE END AND FILL FILLETS AT UPPER SECTION TO DRAIN.

THE CROWN ELEVATION OF ALL PIPES SHALL BE THE SAME AS THE CROWN ELEVATION OF THE LARGEST PIPE UNLESS OTHERWISE INDICATED.

THE FIRST TWO PIPE JOINTS INTO AND OUT OF EACH MANHOLE SHALL BE A 1' SECTION.

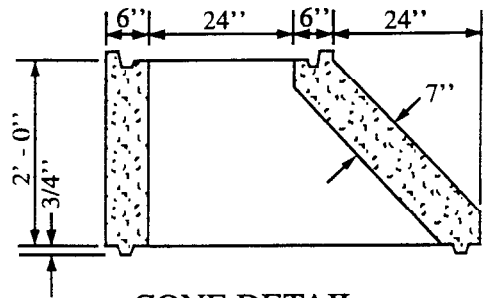
MANHOLE SHAFT OPENING TO BE PLACED ON DOWNSTREAM SIDE OF MANHOLE. LADDER RUNGS ARE REQUIRED. SEE SPECIAL PROVISIONS FOR THE CONSTRUCTION OF SANITARY SEWERS, SECT. I - 05.



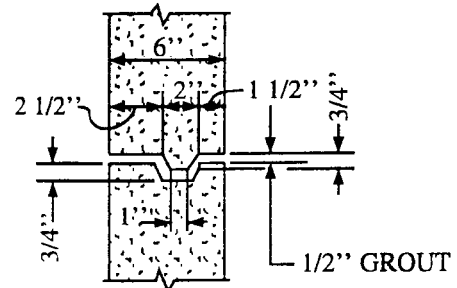
STEP DETAIL

STIRRUP TYPE SAFETY STEPS SPACED 16" O.C. ARE CAST IN PLACE AT TIME OF MANUFACTURE

STEP NOTE:
MATERIAL SHALL BE 3/4" DIA. STEEL CONFORMING TO A.S.T.M. A - 15 OR A - 107 GALVANIZED AFTER FABRICATION IN ACCORD WITH A.S.T.M. A - 123.



CONE DETAIL



JOINT DETAIL

City of San Juan Capistrano



REVISIONS

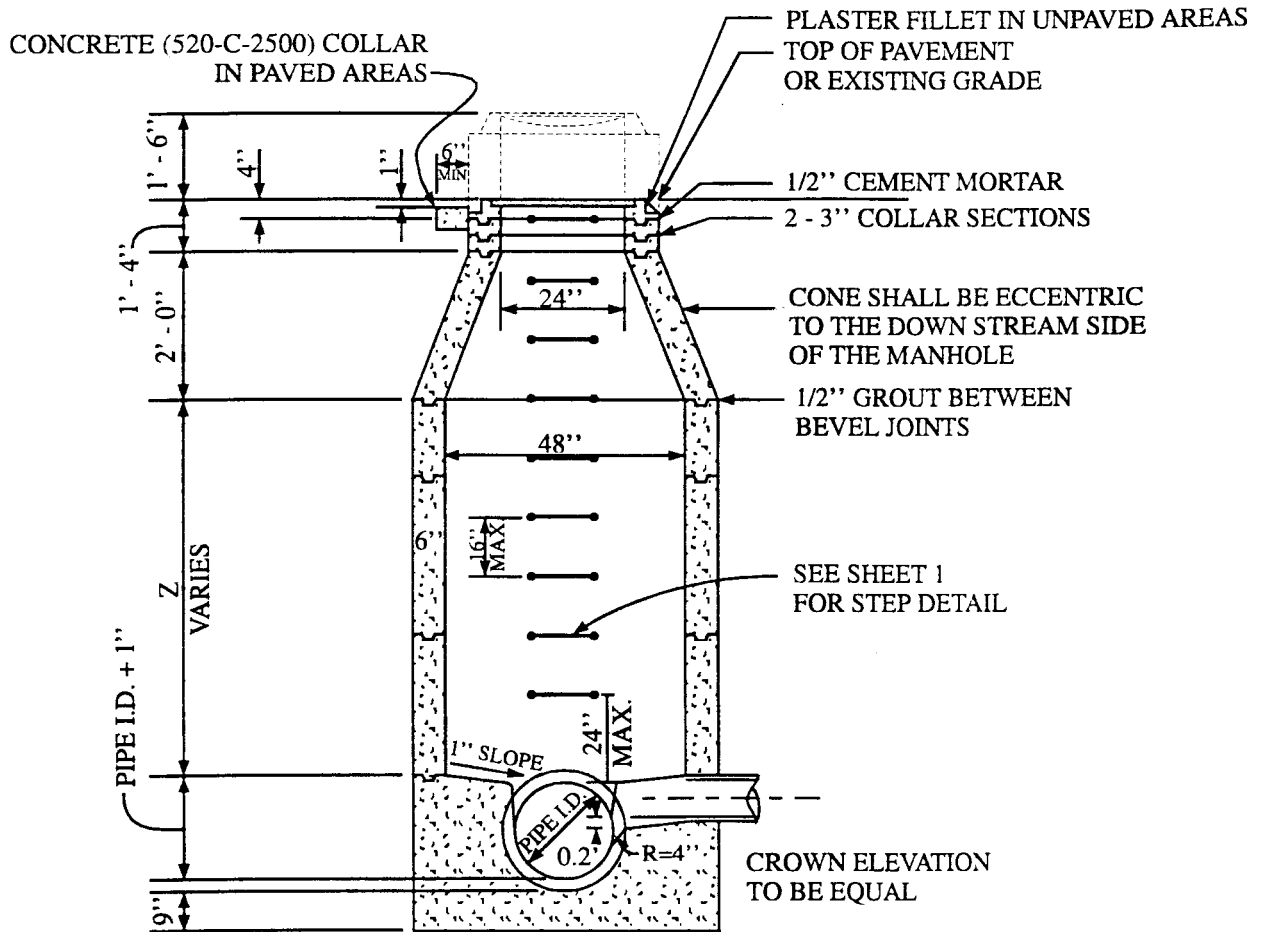
48" MANHOLE

STANDARD PLAN NO.

801

APPROVED BY CITY ENGINEER, *William M. Huber* 7/20/95 DATE

SHT 1 OF 2



BASE POURED AGAINST UNDISTURBED SOIL.

NOTES:

1. 48" I.D. MANHOLE TO BE USED ON SEWERS 20" IN DIAMETER AND LESS.
2. USE 60" I.D. MANHOLE WHEN Z IS EQUAL TO OR GREATER THAN 12'.
3. SEE STD PLAN NO. 807 FOR FRAME AND COVER DETAILS.
4. MANHOLES IN UNPAVED AREAS ADJACENT TO TRAVELLED WAYS SHALL BE PROTECTED BY METAL POSTS SET IN CONCRETE TO THE CITY'S SATISFACTION.
5. MANHOLES PLACED IN UNPAVED AREAS SHALL HAVE FRAME AND COVER 1'6" ABOVE EXISTING GRADE.

City of San Juan Capistrano



REVISIONS	48" MANHOLE	STANDARD PLAN NO.
	<i>William M. Huber</i>	801
	APPROVED BY CITY ENGINEER, WILLIAM M. HUBER R.C.E. 31785 DATE 7/20/95	SHT 2 OF 2