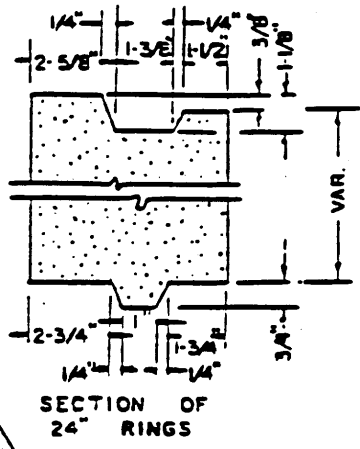


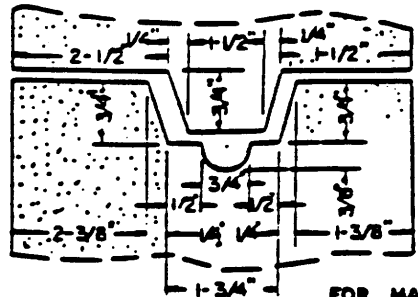
TYPICAL SECTION 36" L.D. ECCENTRIC CONE MANHOLE

MANHOLE FRAME & COVER TO BE RAISED 18" ABOVE NATURAL GROUND WHEN LOCATED OUTSIDE AN IMPROVED AREA.

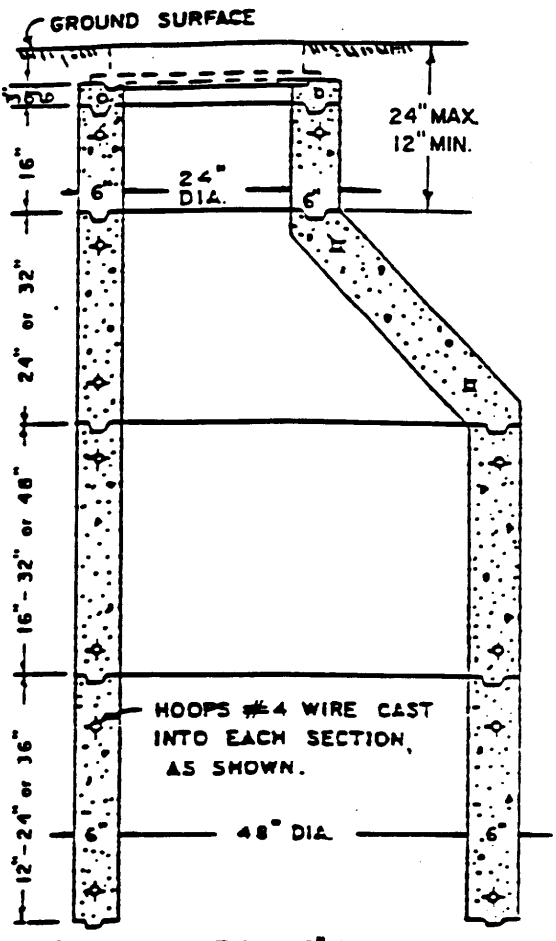
⊗ unless otherwise approved



SECTION OF 24" RINGS



SECTION OF 36" OR 48" MANHOLE PIPE



TYPICAL SECTION 48" I.D. ECCENTRIC CONE MANHOLE

FOR MANHOLE BASE SEE STD. PLAN # 506 & 507
 FOR MANHOLE FRAME & COVER SEE STD. PLAN # 510
 FOR USE IN NON-TRAFFIC AREAS

⊗ TO BE USED ONLY WITH PERMISSION OF THE CITY ENGINEER.

REQUIRED BACKFILL COMPACTION:
 CITY STREETS 95% ⊗
 STATE HIGHWAYS 95%

CITY OF BUENA PARK DEPARTMENT OF PUBLIC WORKS NON-REINF. CONC. ECCENTRIC CONE SANITARY SEWER MANHOLE	Approved <i>Donald K. Jensen</i> 5/15/87 REV. 4/13/94 City Engineer Date	STD 502
	(Signature/Date area)	