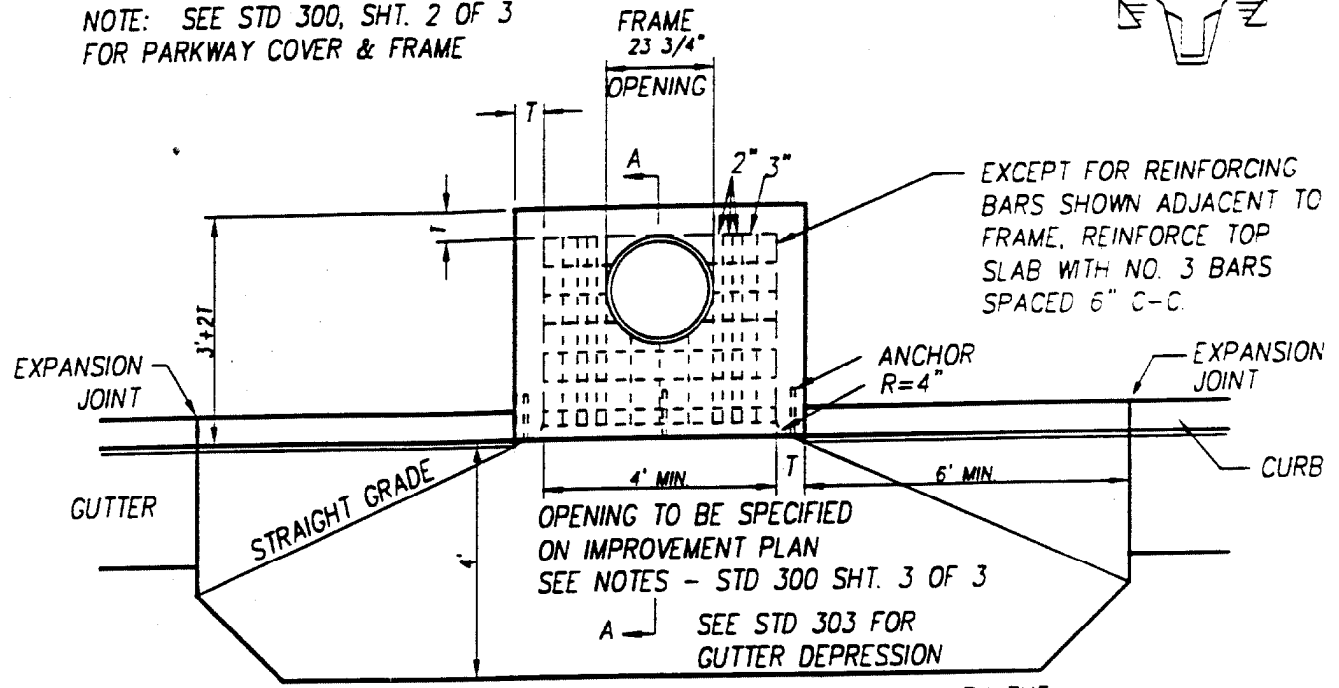
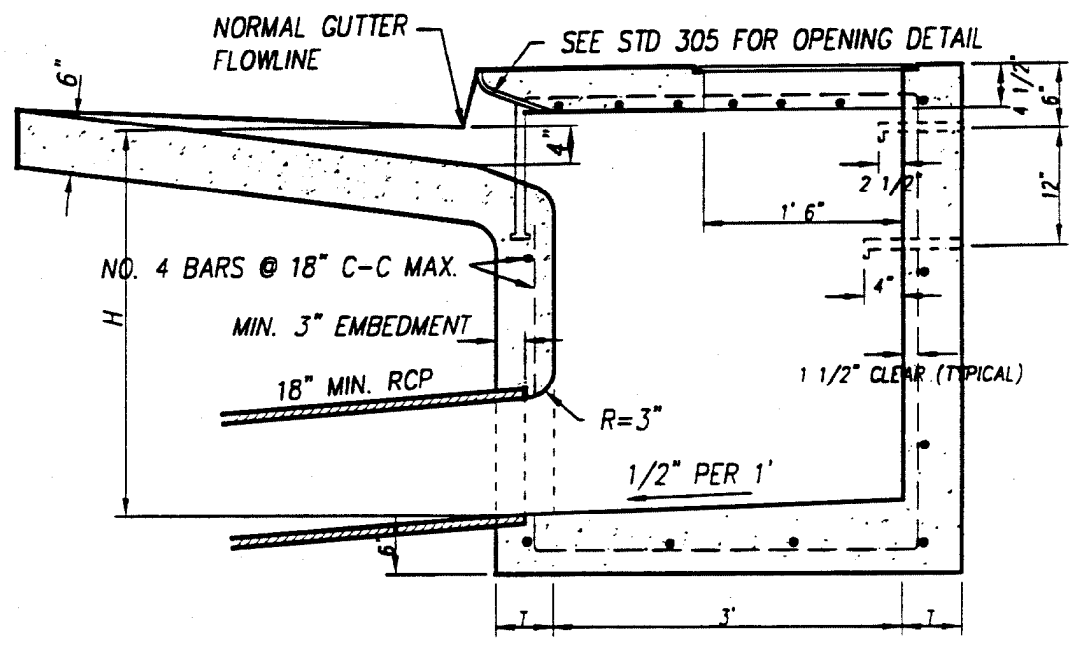




NOTE: SEE STD 300, SHT. 2 OF 3 FOR PARKWAY COVER & FRAME

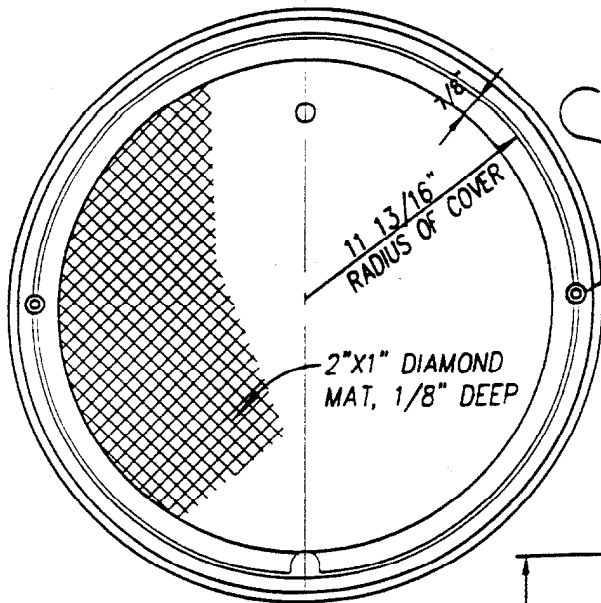


COMPACT BACKFILL TO 90% MIN., WITH THE TOP 12" COMPACTED TO 95% MIN. UNDER PAVING.



SECTION A-A

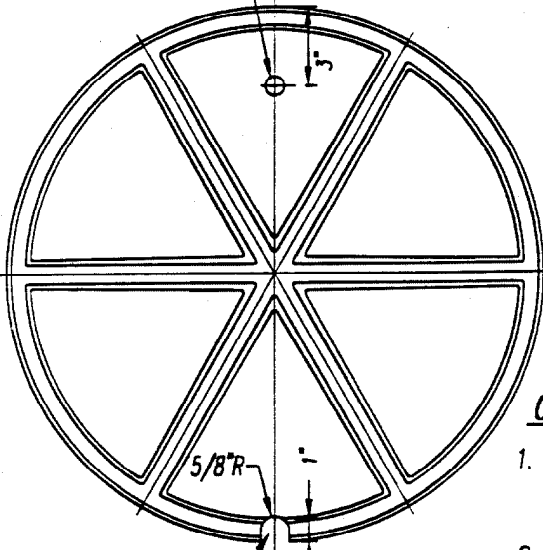
CITY OF RANCHO MIRAGE		STANDARD DETAIL 300 SHT. 1 OF 3
REVISIONS	CURB INLET CATCH BASIN	
	<i>William A. Cas</i>	
	APPROVED BY: CITY ENGINEER	DATE: 5/31/01



TOP OF MANHOLE FRAME & COVER

TOTAL WT. = 130 LBS.

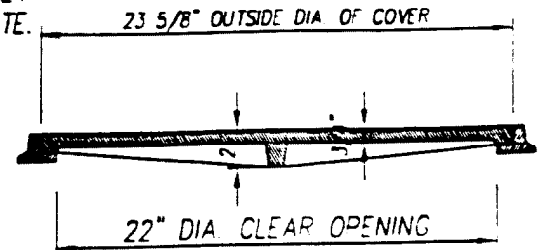
3/4" DIA. PICK HOLE



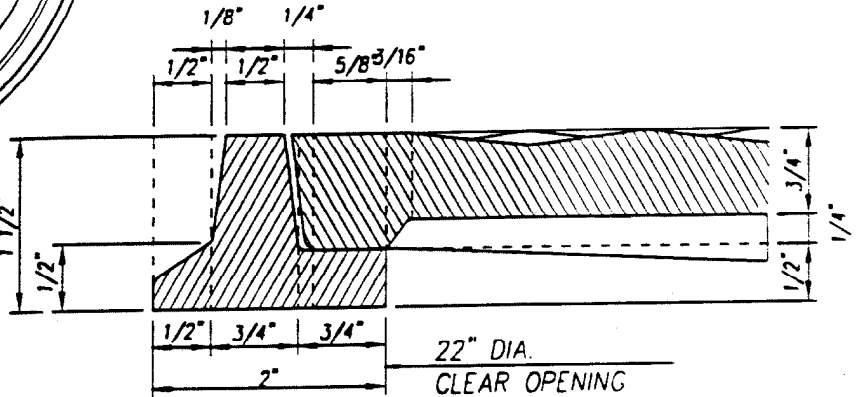
GAP ON RIM OF COVER OPPOSITE PICK HOLE

BOTTOM OF MANHOLE COVER

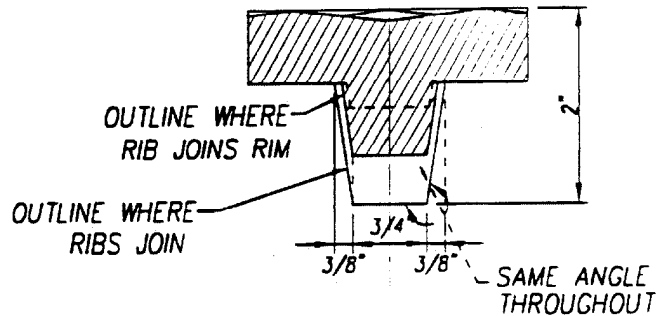
ALLEN SOCKET SET SCREW. SEE NOTE.



CROSS SECTION THRU FRAME & COVER



CROSS SECTION THRU RIM



CROSS SECTION THRU RIB AT MID RADIUS

1. FRAME AND COVER SHALL BE GRAY CAST IRON CONFORMING TO THE LATEST A.S.T.M. STANDARD A48, CLASS 30 OR BETTER. GALVANIZE PER A.S.T.M. A385.
2. INSTALL TWO 3/4"x3/4" ALLEN SOCKET SET SCREWS, 90° TO PICK HOLE, IN HOLES DRILLED AND TAPPED 1" IN DEPTH. GALVANIZE PER A.S.T.M. 153.
3. FRAME AND COVER SHALL BE TESTED FOR ACCURACY OF FIT AND SHALL BE MARKED IN SETS BEFORE DELIVERY. RETAP FRAME AS REQUIRED TO SUIT SET SCREWS.

CITY OF RANCHO MIRAGE

STANDARD

REVISIONS

**CURB INLET CATCH BASIN
MANHOLE FRAME AND COVER**

DETAIL

300

APPROVED BY: *[Signature]* 5/31/01 DATE

SHT. 2 OF 3



CONNECTION PIPES MAY BE PLACED ANY POSITION AROUND THE WALLS, PROVIDED THEY POINT IN THE PROPER DIRECTION AND THE POSITION IS OTHERWISE CONSISTENT WITH THE IMPROVEMENT PLANS.

CURVATURE OF THE LIP AND SIDEWALLS AT GUTTER OPENING SHALL BE FORMED BY CURVED FORMS AND SHALL NOT BE MADE BY PLASTERING.

DIMENSIONS:

- T = 6" IF H IS 8' OR LESS
- T = 8" IF H IS GREATER THAN 8' AND LESS THAN 20'
- H = 3' 6", UNLESS OTHERWISE SPECIFIED

FLOOR OF BASIN SHALL BE GIVEN A STEEL-TROWELLED FINISH.

MANHOLE SHALL BE PLACED AS SHOWN ON STD 300, SHEET 1 OF 3, UNLESS NOTED DIFFERENTLY ON IMPROVEMENT PLANS.

OUTLET PIPE SHALL BE TRIMMED TO THE FINAL SHAPE AND LENGTH BEFORE CONCRETE IS POURED.

OPENING SHALL BE 4' UNLESS OTHERWISE SPECIFIED.

REINFORCING STEEL SHALL BE NO. 3 ROUND DEFORMED BARS IN TOP SLAB AND NO. 4 BARS AT 18 INCH CENTERS IN SIDES OF BOX.

STEPS SHALL BE 3/4" PLAIN ROUND GALVANIZED STEEL AND SHALL BE ALHAMBRA FDY. A-3320 OR EQUAL.

- IF H IS 3.5 FEET OR LESS, NO STEPS ARE REQUIRED.
- IF H IS MORE THAN 3.5 FEET, AND NOT MORE THAN 5', INSTALL 1 STEP 16" ABOVE FLOOR OF BASIN.
- IF H IS MORE THAN 5 FEET, INSTALL STEPS 12" APART, WITH THE TOP STEP 6" BELOW THE SURFACE OF THE BASIN.
- ALL STEPS SHALL BE 4" FROM THE WALL, EXCEPT THE TOP STEP, WHICH SHALL BE 2 1/2" (CLEAR) FROM THE WALL, AND ANCHORED NOT LESS THAN 5 INCHES IN THE WALL OF THE BASIN.

SURFACE OF ALL EXPOSED CONCRETE IN BASIN SHALL CONFORM IN SLOPE, GRADES, COLOR, FINISH AND SCORING TO EXISTING OR PROPOSED CURB AND WALL ADJACENT TO THE BASIN.

CONCRETE SHALL BE CLASS 560-C-3250. WHEN THE BASIN IS CONTIGUOUS TO A SIDEWALK, THE TOP OF THE BASIN SHALL BE POURED MONOLITHIC WITH THE SIDEWALK USING CLASS 560-C-3250 CONCRETE FOR THE SIDEWALK AND THE TOP OF THE CATCH BASIN FINISHED PER SIDEWALK STANDARDS.

CITY OF RANCHO MIRAGE		STANDARD DETAIL 300 SHT. 3 OF 3
REVISIONS	CURB INLET CATCH BASIN NOTES	
<div style="display: flex; justify-content: space-between; align-items: center;"> <div style="font-size: 18pt; font-weight: bold;"> </div> <div style="font-size: 18pt; font-weight: bold;"> 5/31/01 </div> </div> <p style="font-size: 12pt; margin-top: 5px;">APPROVED BY: CITY ENGINEER DATE</p>		