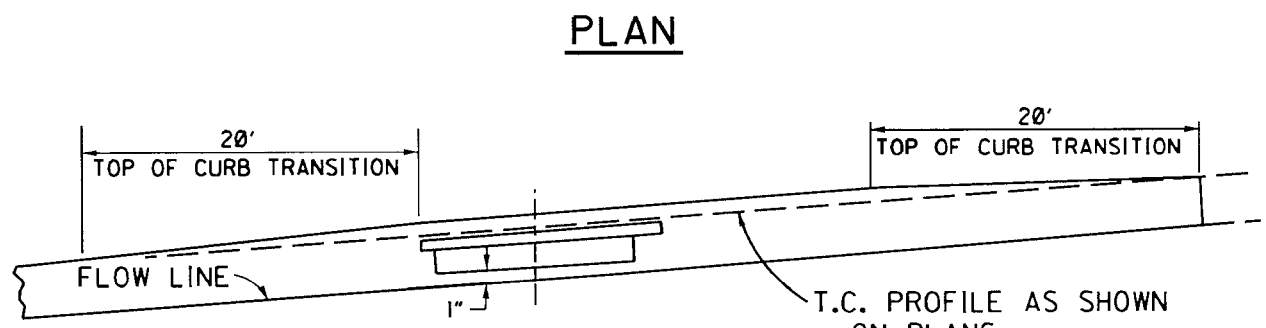


SECTION D-D



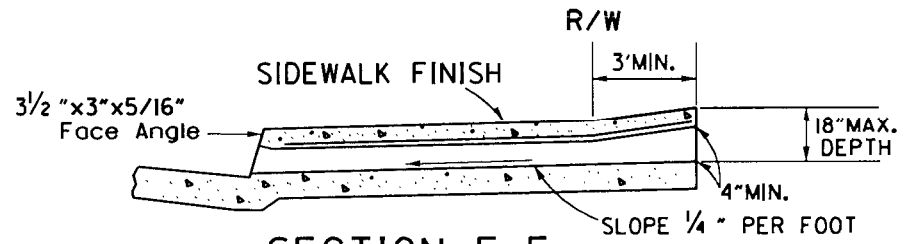
PLAN



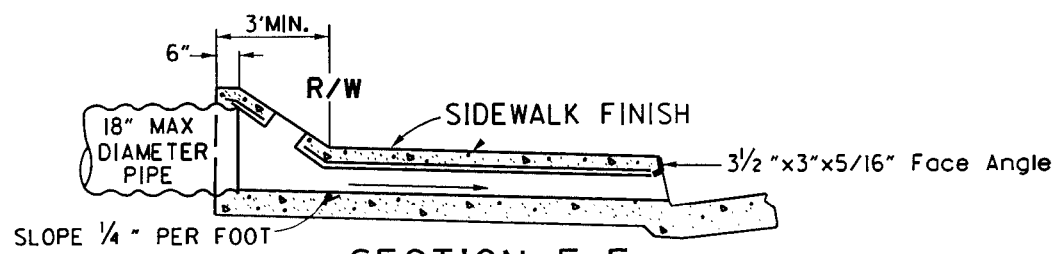
PROFILE

NOTES:

1. See Sheet 4 for details and notes.
2. Span "S" and height of opening and curb face at culvert shall be noted on plans.



SECTION E-E



SECTION F-F

ORANGE COUNTY RESOURCES & DEVELOPMENT MANAGEMENT DEPARTMENT

STD. PLAN

Approved *H. I. Nakasone*
H. I. Nakasone, Chief Engineer

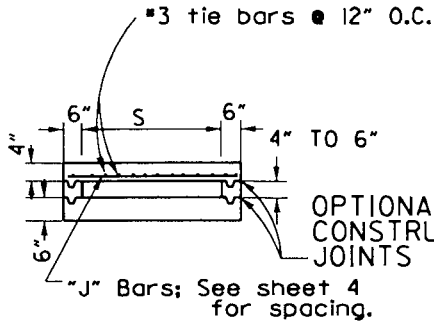
Adopted: Res. 77-92 Revised: Res. 78-791; 06-010

1309

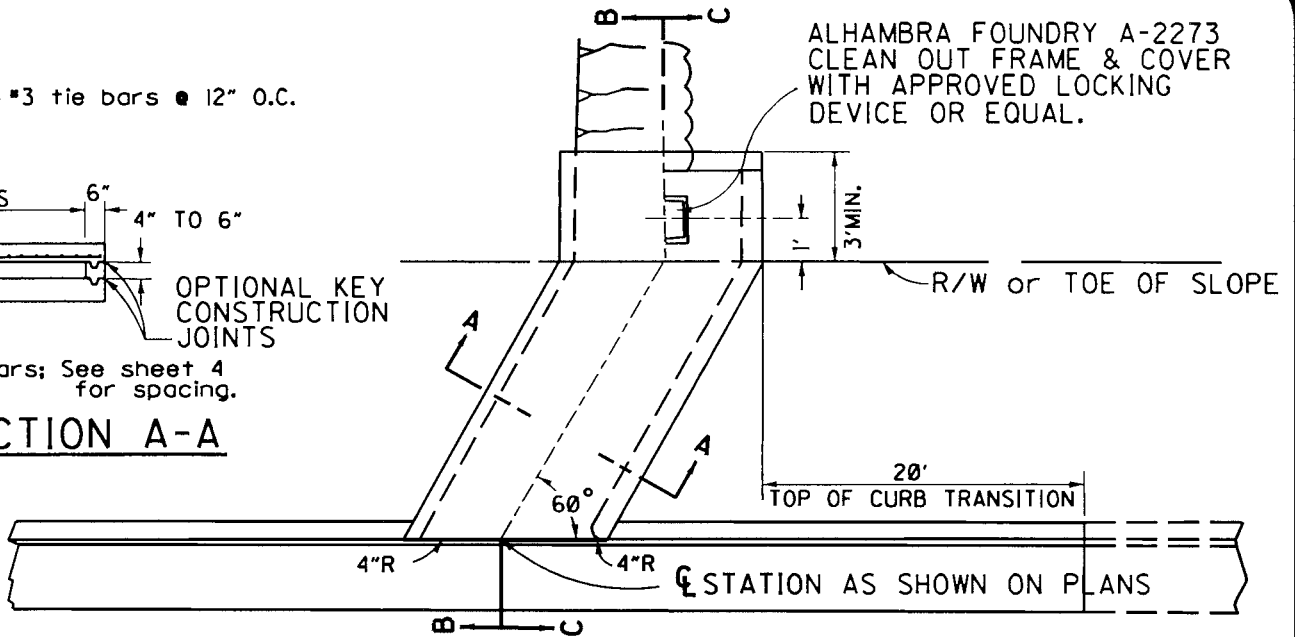
PARKWAY CULVERT - TYPE "A"

SHT. 1 OF 4

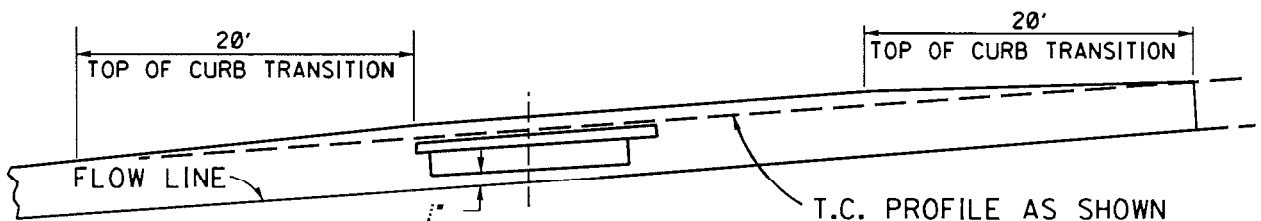
ALHAMBRA FOUNDRY A-2273
 CLEAN OUT FRAME & COVER
 WITH APPROVED LOCKING
 DEVICE OR EQUAL.



SECTION A-A



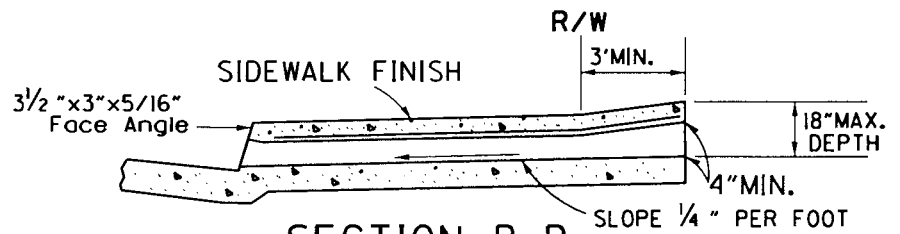
PLAN



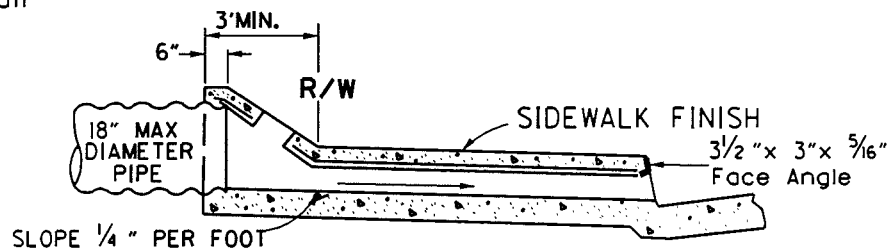
PROFILE

NOTES:

1. See Sheet 4 for details and notes.
2. Span "S" and height of opening and curb face at culvert shall be noted on plans.



SECTION B-B



SECTION C-C

ORANGE COUNTY RESOURCES & DEVELOPMENT MANAGEMENT DEPARTMENT

Approved *H. I. Nakasone*
 H. I. Nakasone, Chief Engineer

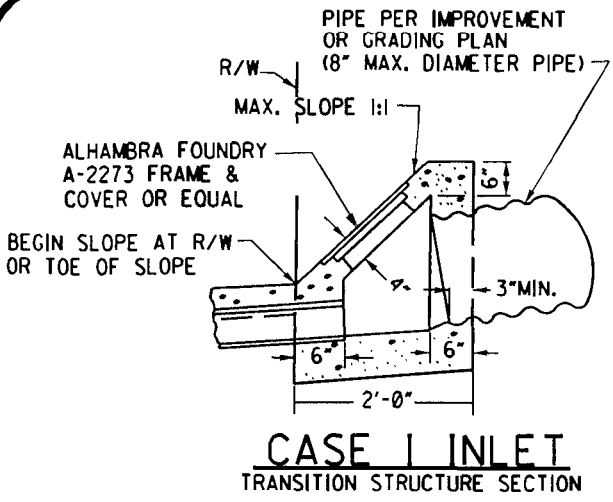
Adopted: Res. 77-92 Revised: 78-791; 06-010

STD. PLAN

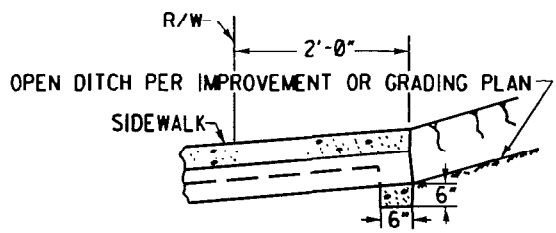
1309

PARKWAY CULVERT - TYPE "B"

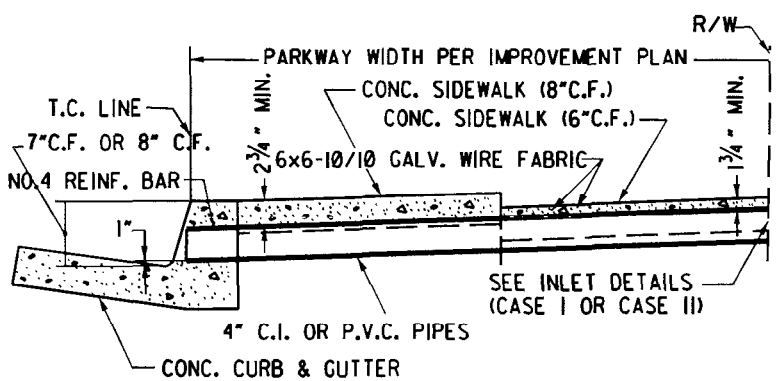
SHT. 2 OF 4



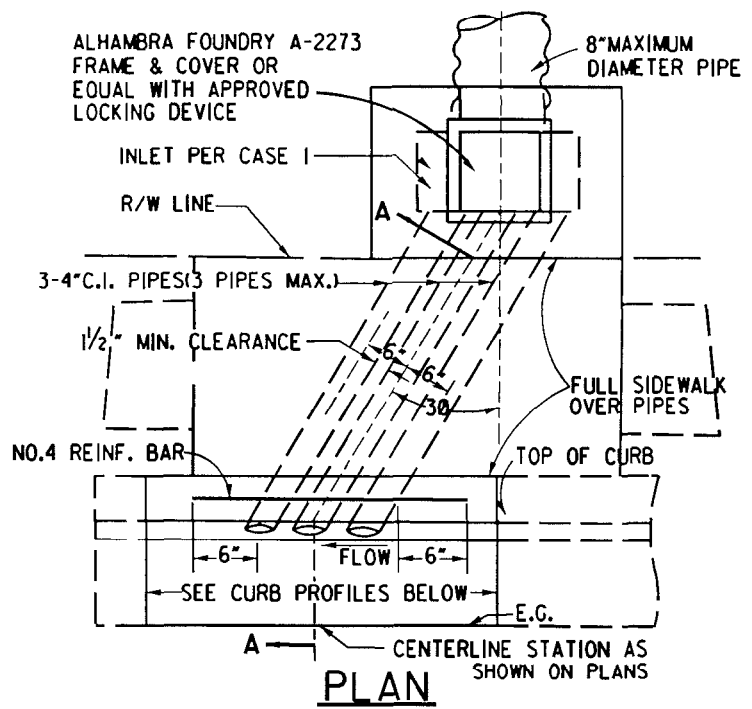
CASE I INLET
TRANSITION STRUCTURE SECTION



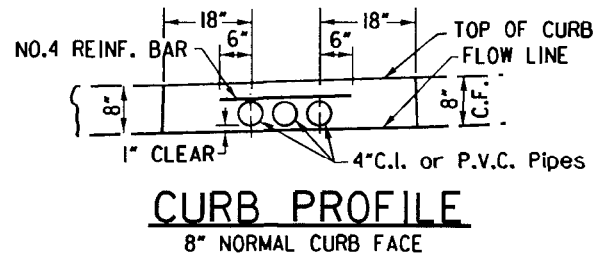
CASE II INLET



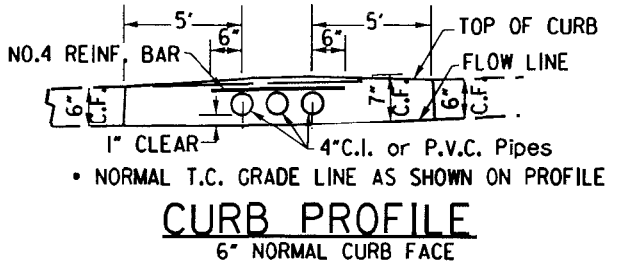
SECTION A-A



PLAN



CURB PROFILE
8" NORMAL CURB FACE



CURB PROFILE
6" NORMAL CURB FACE

NOTES:

1. See Sheet 4 for details and notes.
2. Asbestos-cement pipe may be substituted at the Contractor's option or as specified on the plans.
3. Alhambra Foundry A-470 rectangular cast iron pipe may be substituted at the Contractor's option or as specified on the plans.
4. Cast iron facilities shall have a bituminous coating conforming to AASHTO Designation: M190.
5. P.V.C. pipes shall be schedule 40.

ORANGE COUNTY RESOURCES & DEVELOPMENT MANAGEMENT DEPARTMENT

Approved *H. I. Nakasone*
H. I. Nakasone, Chief Engineer

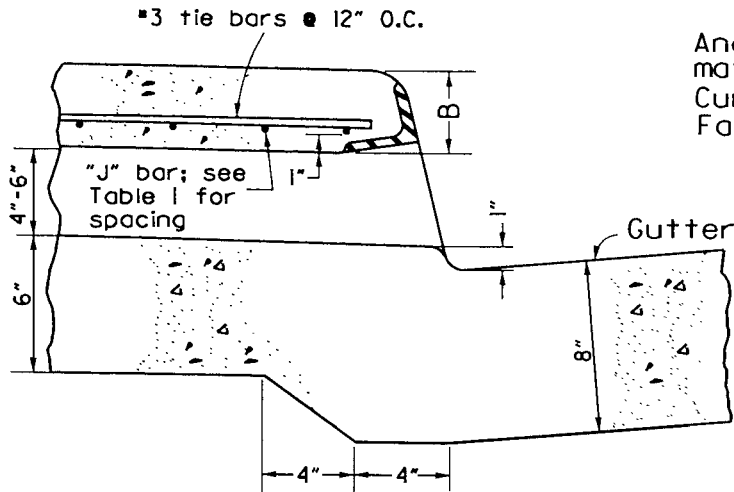
Adopted: Res. 77-92 Revised: Res. 78-79; 06-010

STD. PLAN

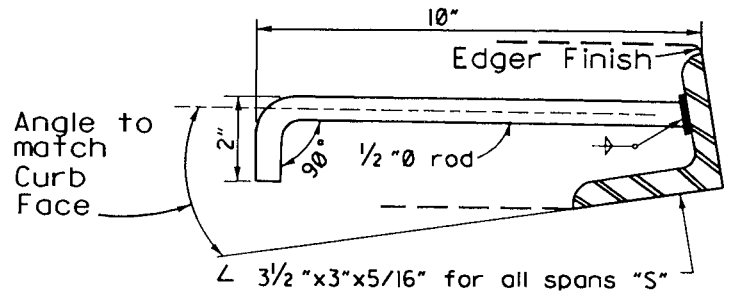
1309

SHT. 3 OF 4

PARKWAY CULVERT - TYPE "C"



OUTLET DETAIL



Length of Curb Opening	No. of Anchors
3' or less	2
3'-6" to 6'-0"	3

FACE ANGLE ANCHOR
DETAIL

Span S	B	STEEL SCHEDULE J-BARS		
		Size	Spacing C-C	Length
2'-0"	3"	#3	7"	2'-9"
2'-6"	"	"	"	3'-3"
3'-0"	"	"	"	3'-9"
3'-6"	"	"	6"	4'-3"
4'-0"	"	"	5"	4'-9"
4'-6"	4"	"	6 1/2"	5'-3"
5'-0"	"	"	5"	5'-9"
5'-6"	"	"	4"	6'-3"
6'-0"	"	"	3 1/2"	6'-9"

TABLE I

GENERAL NOTES:

1. Use Parkway Culvert - Type "A" when inlet velocities will be 10 feet per second or greater.
2. Use Parkway Culvert - Type "B" when inlet velocities will be less than 10 feet per second.
3. Use Parkway Culvert - Type "C" when inlet velocities are less than 5 feet per second.
4. Floor of Parkway Culvert shall have a steel trowel finish.
5. All exposed metal shall be galvanized after fabrication.
6. Height of curb opening for Types "A" & "B" Parkway Culverts will vary with type of curb.
7. Span "S" and height of curb opening will be determined from the required hydraulic capacity and limited to the dimension in Table I.
8. Reinforcing steel shall be 1" clear to inside of Culvert unless otherwise shown.

ORANGE COUNTY RESOURCES & DEVELOPMENT MANAGEMENT DEPARTMENT

Approved _____

H. I. Nakasone
H. I. Nakasone, Chief Engineer

Adopted: Res. 77-92 Revised: 78-79; 06-010

STD. PLAN

1309

SHT. 4 OF 4

PARKWAY CULVERT - DETAILS AND NOTES