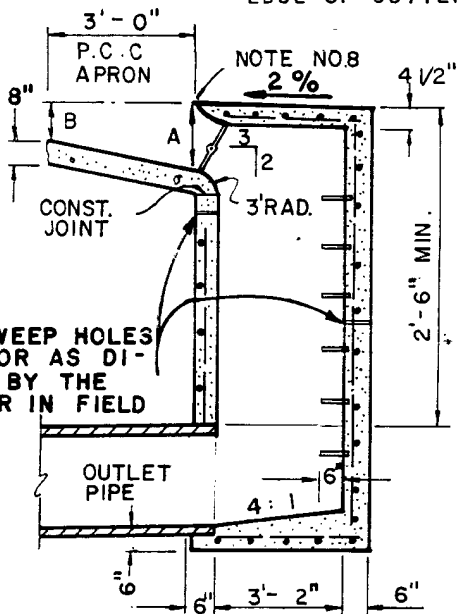


	6" CF	8" CF
A	9 1/2"	11 1/2"
B	4"	6"



LONGITUDINAL SECTION

CROSS SECTION

NOTES:

1. PLACE ONE 3/4 INCH DIAMETER SUPPORTING BOLT FOR EVERY 6-FOOT LENGTH OF OPENING, SPACED EVENLY OVER THE ENTIRE OPENING.
2. WHERE SIDEWALK EXISTS ADJACENT TO CATCH BASIN, TOP SLAB SHALL BE EXTENDED TO JOIN SIDEWALK. TRANSVERSE STEEL IN TOP SLAB SHALL EXTEND 12 INCHES BEYOND WALK.
3. SEE STANDARD DRAWING 206-0 REINFORCING.
4. LOCAL DEPRESSION SHALL BE 8 INCHES THICK.
5. ALL METAL SHALL BE GALVANIZED AFTER FABRICATION.
6. ALL CONCRETE SHALL BE 560-C-3250.
7. WHEN "W" EXCEEDS 15 FEET, PROVIDE MANHOLES AT EACH END.
8. SEE STANDARD 205 FOR FACE PLATE AND SUPPORT.

Revised	Drawn <i>Lib</i>	Date	CITY OF CORONA PUBLIC WORKS DEPARTMENT
3/86	Approved	Date <i>3-28-86</i>	
10/90	<i>Joseph R. Palencia</i> Director of Public Works		
			CATCH BASIN TYPE "A"
			STD. PLAN 201-0