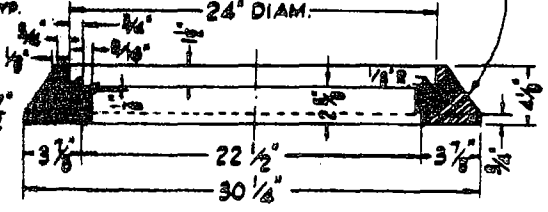
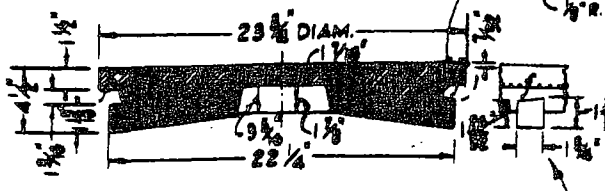


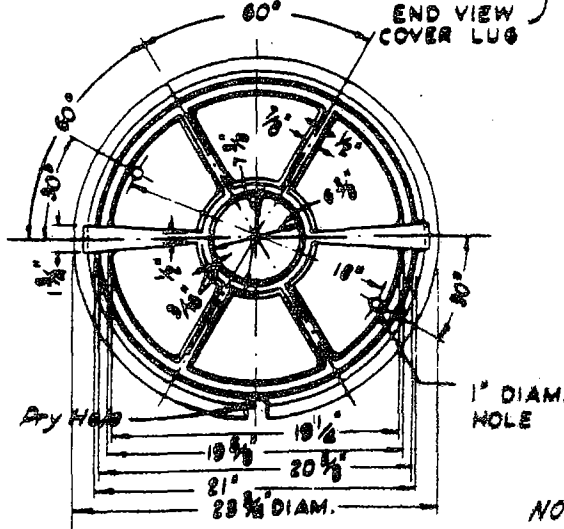
PLAN OF COVER TOP VIEW

PLAN OF FRAME

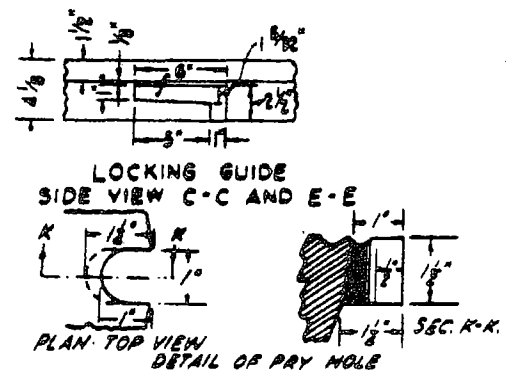


SECTIONAL ELEVATION A-A

SECTIONAL ELEVATION B-B



PLAN OF COVER BOTTOM VIEW



NOTE: Machine seats and grind lugs smooth. Perimeter of cover shall be ground smooth, Diameter tolerance $\pm 1/16$ "
 Weight of Manhole Frame - 150 lbs.
 Weight of Manhole Cover - 215 lbs.
 The Cast Iron used shall have a tensile strength of 30,000 lbs. per sq. in.
 Alhambra Foundry No. A 1175 or Apex "X-107

CITY OF MONTCLAIR			
MANHOLE FRAME & COVER			
DRAWN BY Rogers	CHECKED BY D.G.	APPROVED BY <i>Carl L. Bartell</i>	DATE 8-31-87
CITY ENGINEER R.C.E. 20717			