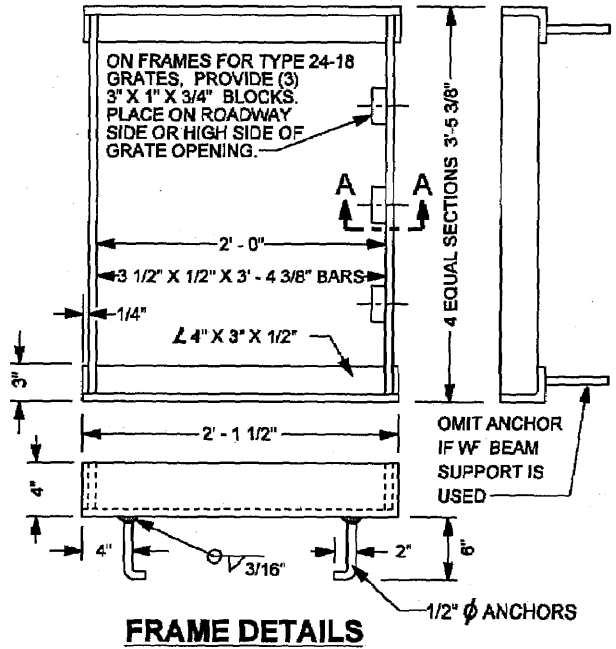


**GRATE DETAILS**  
(SEE TABLE BELOW)

TYPE	NO. BARS	"W"	"X"	USAGE
24-9	9	2"	1 9/16"	USE IN LOCATIONS OFF THE ROADBED ON ALL TYPES OF HIGHWAYS
24-12	12	1 3/8"	1 1/4"	USE WITHIN THE ROADBED ON HIGHWAYS WHERE BICYCLES AND PEDESTRIANS ARE EXCLUDED, OR FOR RURAL CONDITIONS.
24-18	18	3/4"	15/16"	USE WITHIN THE ROADBED UNDER URBAN CONDITIONS WHERE BICYCLES AND PEDESTRIANS ARE PERMITTED.



TYPE	WEIGHTS	
	WELDED	BOLTED
24-9	200	230
24-12	258	286
24-18	372	400
24" FRAME	90	—

**GENERAL NOTES:**

- ① GRATE TYPE NUMBERS REFER TO WIDTH OF GRATE IN INCHES AND NUMBER OF BARS RESPECTIVELY.
- ② CONTRACTOR HAS THE OPTION OF USING WELDED OR BOLTED GRATES.
- ③ GRATES AND FRAMES TO BE PAINTED.
- ④ ROUNDED TOP OF BARS OPTIONAL ON ALL GRATES.
- ⑤ GRATE SHALL BE PLACED SO THAT BARS ARE PARALLEL TO DIRECTION OF PRINCIPAL SURFACE FLOW.

R.C.T.D. STD. No. 305

REVISIONS:		<p style="font-size: 24px; font-family: cursive;">City of La Quinta</p>	STANDARD
APPROVED 08/21/01	CHRIS A. VOGT CITY ENGINEER RCE 44250		315
<b>GRATE AND FRAME DETAIL</b>		SHEET 1 OF 1	