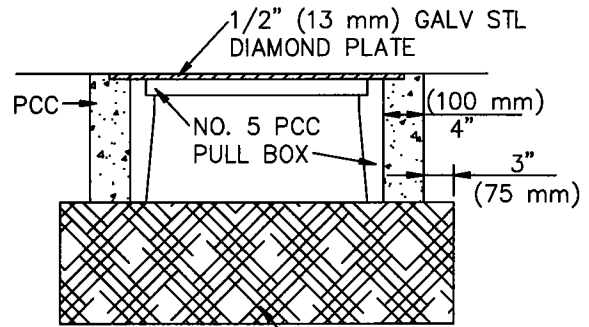
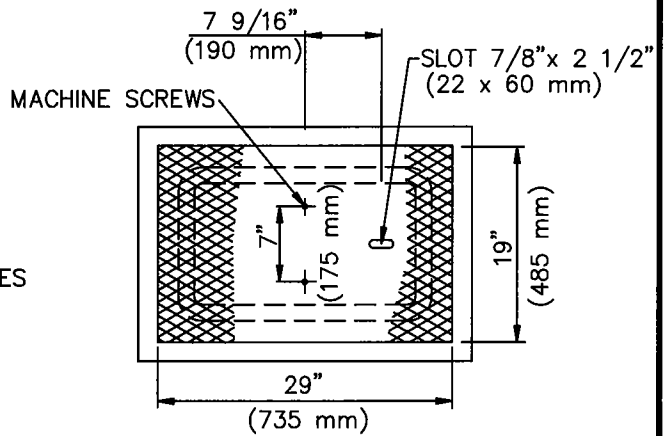
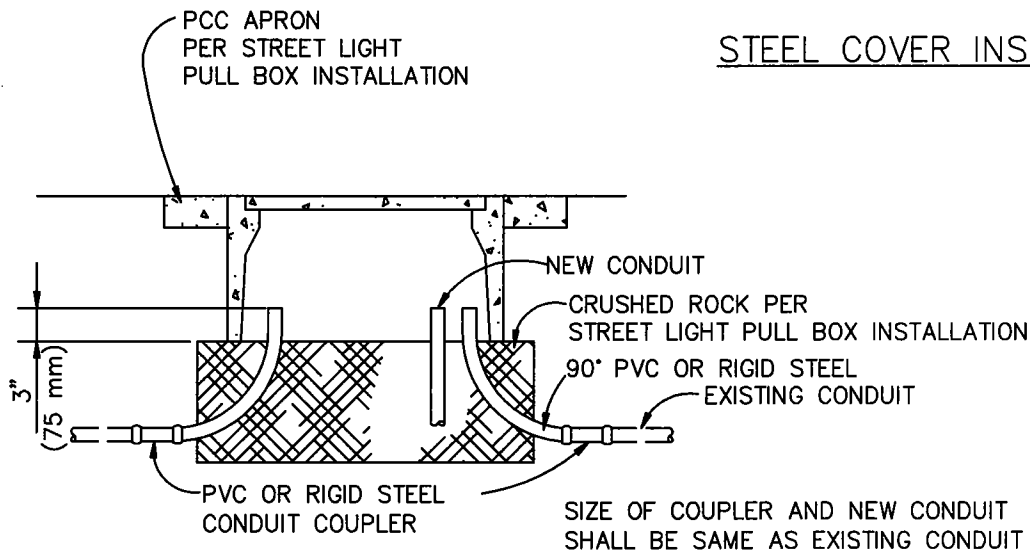


TRAFFIC SIGNAL  
PULL BOX INSTALLATION



ATTACH STL PLATE TO PCC COVER  
WITH 2 BRASS MACHINE SCREWS,  
1/4" (6 mm) 20 NC-2 FLAT HEAD,  
IN 1 1/4" (32 mm) HOLES w/ EXPANSION SHIELDS

STEEL COVER INSTALLATION



STREET LIGHT CONDUIT INTERCEPT