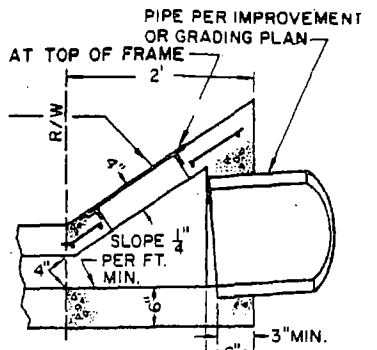
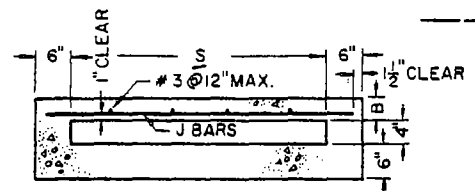


SECTION A-A

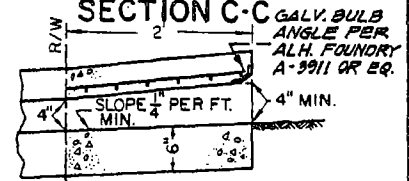
RECTANGULAR FRAME & COVER PER ALH. FOUNDRY A-2015 OR EQUAL



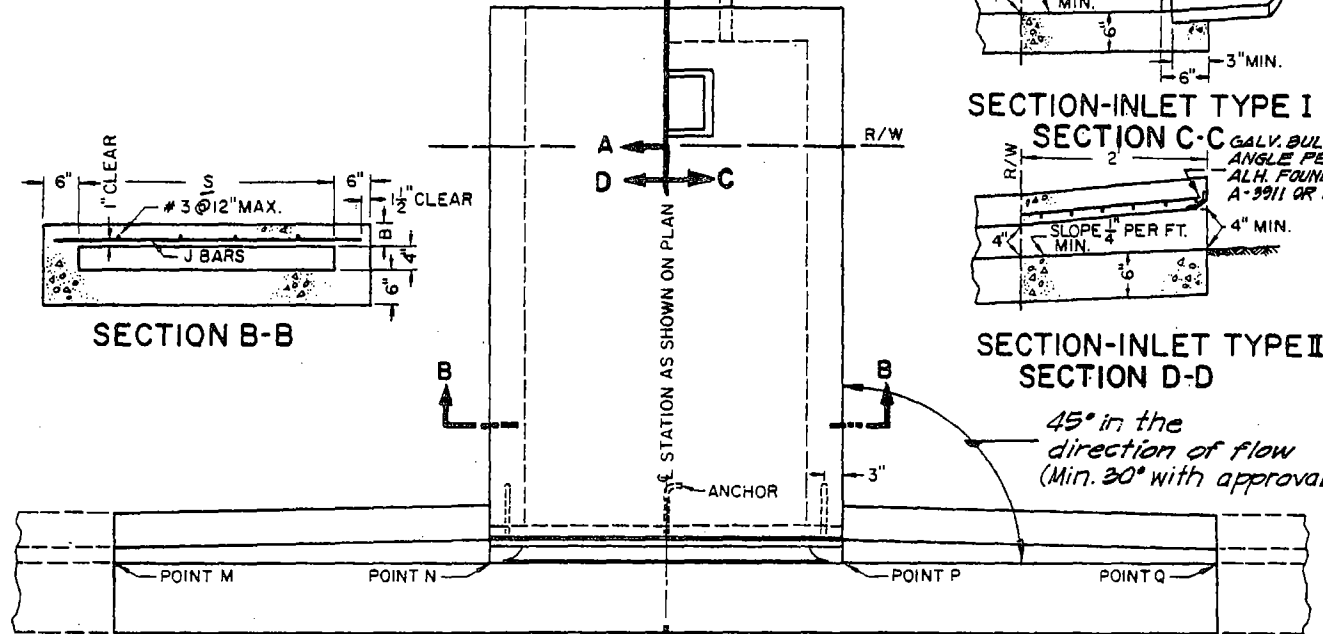
SECTION-INLET TYPE I



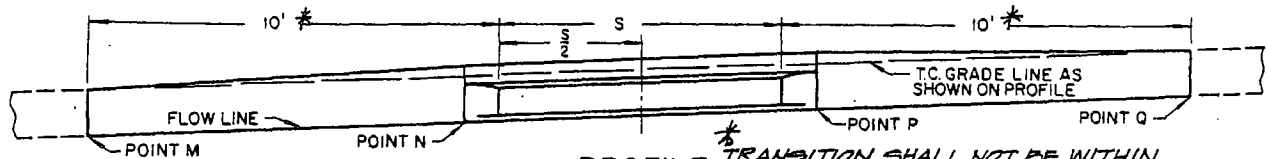
SECTION B-B



SECTION-INLET TYPE II SECTION D-D



* TRANSITION SHALL BE MEASURED ALONG BACK OF SIDEWALK PLAN
 * TRANSITION IS NOT REQUIRED WHEN CURB FACE = 5" + B OR GREATER



PROFILE * TRANSITION SHALL NOT BE WITHIN DRIVEWAY OR CURB RETURNS.

*** PIPE DRAIN THRU CURB**

CURB FACE	MAX. PIPE DIA.
6"	3"
8"	4"
10"	6"

* PIPE SHALL BE CAST IRON OR STEEL

NOTES:

- FLOOR OF BOX TO BE TROWELED SMOOTH.
- WHEN THE TOE OF SLOPE IS WITHIN THE R/W, INLET TYPE I BEGINS AT THE TOE RATHER THAN AT THE R/W LINE.
- FOR OPEN DITCH APPROACH (TYPE II) THE 2' EXTENSION IS NOT REQUIRED WHEN THE BACK OF WALK IS 2' OR MORE FROM THE R/W LINE.
- TOP OF INLET STRUCTURE (TYPE I & II) TO BE FLUSH WITH ADJACENT SURFACE WHERE PRACTICABLE.
- A HEADED STEEL STUD $\frac{5}{8}$ " X $6\frac{3}{8}$ " WITH HEAD D=1" ATTACHED BY A FULL PENETRATION BUTT WELD MAY BE USED AS AN ALTERNATE ANCHOR.
- NORMAL CURB FACE AT POINT M AND Q, B+5" AT POINT N AND P.
- CLASS 560-C-3250 R.C.C. SHALL BE USED.

STEEL LIST

S	B	GALVANIZED STEEL ANGLE	ANCHOR	J BAR		
				SIZE	SPACING	LENGTH
1'-0"	3"	2 1/2" X 2" X 3/8"	2	#3	7"	1'-9"
1'-6"	"	"	"	"	"	2'-3"
2'-0"	"	"	"	"	"	2'-9"
2'-6"	"	"	"	"	"	3'-3"
3'-0"	"	"	3	"	"	3'-9"
3'-6"	"	"	"	"	6"	4'-3"
4'-0"	"	"	"	"	5"	4'-9"
4'-6"	4"	3 1/2" X 3" X 1/2"	"	"	6 1/2"	5'-3"
5'-0"	"	"	"	"	5"	5'-9"
5'-6"	"	"	"	"	4"	6'-3"
6'-0"	"	"	"	"	3 1/2"	6'-9"

CITY OF MONTCLAIR

SIDEWALK DRAIN OUTLET AND PIPE DRAIN THRU CURB

DWN. BY <i>EH</i>	CHKD. BY <i>DG</i>	APPROVED BY <i>Paul J. Santell</i> CITY ENGR. R.C.E. 2017	DATE 4/5/09
----------------------	-----------------------	---	----------------