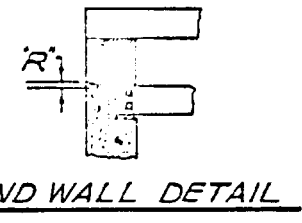
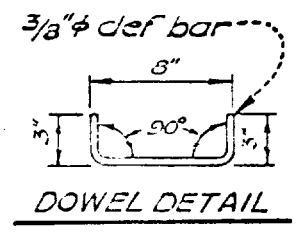
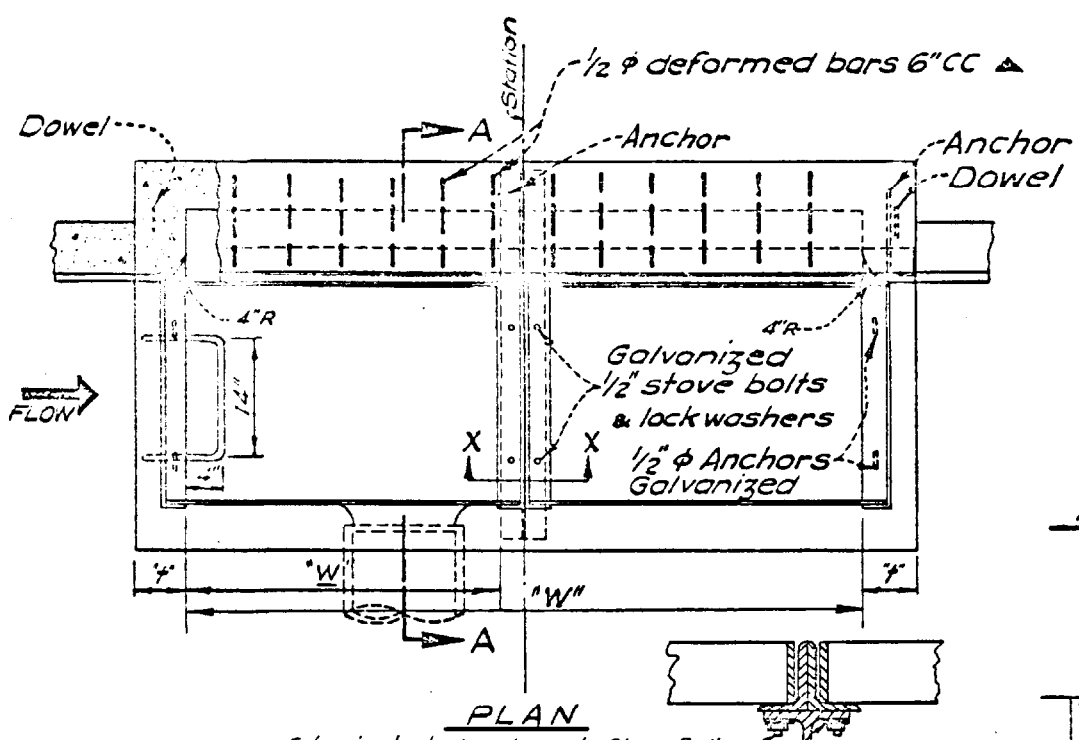
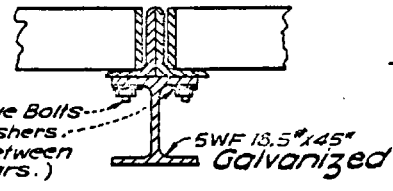


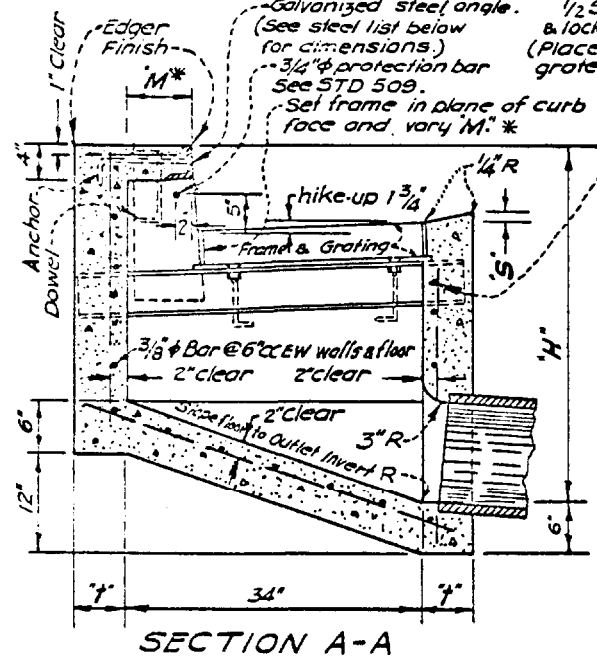
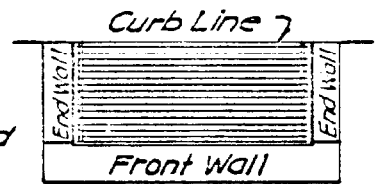
SHEET NO. 6-6  
 REV. DATED: PER DESIGNED BY: ER AS ER D:  
 ORANGE CO NO. 304 THUS  
 STATE OF CALIF 7-832.5 THUS---



PLAN



SECTION X-X



SECTION A-A

NOTES

- o  $R = 1/2$  inch for lower end-wall of a single basin, or the lowest basin of a series of spread basins.
- o  $R = 0$  for all other end walls.
- o  $S = 1 1/2$  inches for a single basin or the lowest basin of a series of spread basins.  $S = 1/2$  inch for all basins above the lowest basin.
- o WALL THICKNESS
  - $t = 6$  inches if  $H$  is 4 feet or less.
  - $t = 8$  inches if  $H$  is between 4 feet and 8 feet.
  - $t = 10$  inches if  $H$  is 8 feet or over.
- o  $W = 2$  feet  $11 3/8$  inches for one grating. Add 3 feet  $5 3/8$  inches for each additional grating. See STD 511.

STEEL LIST

	Number of Gratings			Dowels	Anchors			Opening Length
1	5	3'-11 1/2"	0	2	2	See STD 511	3/8" phi	2' - 11 3/8"
2	12	0	7' - 4 3/4"	2	3	See STD 511	3/4" phi	0' - 4 3/4"
3	19	0	10' - 10 1/4"	2	4	See STD 511	3/8" phi	7' - 10 1/4"
4	3	0	17' - 8 7/8"	2	6	See STD 511	3/8" phi	13' - 8 7/8"
5	27	0	24' - 15 5/8"	2	8	See STD 511	3/8" phi	19' - 15 5/8"

UNLESS OTHERWISE SPECIFIED ON PLANS AND SPECIFICATIONS:

1. The usual inlet location at a street intersection is at the upstream end of the curb return and clear of the pedestrian crosswalk.
2. Stations of inlets, shown on the plans, apply at center of inlet.
3. Minimum grade intercept is three (3) percent.
4. Curb opening shall conform to curb alignment. See STD 202.
5. The basin shall have one grating.
6. Curvature of the end walls at curb opening shall be formed and shall not be made by plastering.
7. Outlet pipe shall be trimmed to the final shape and length before concrete is poured.
8. Concrete shall be Class A, per the California Division of Highways - Standard Specifications.
9. The flowline shall be hard, smooth troweled.
10. See STD 510 for inlet depressions.
11. See STD 206 for sidewalk.
12. Not permitted in sump locations.
13. Plans shall specify wall location of outlet.
14. See STD 509 for miscellaneous inlet details, and STD 521 for HIGHWAYS.
15. Elevations shall be shown on the Improvement Plans, for top of curb, gutter flowline at inlet and pipe outlet flowline.

CITY OF BREA

STANDARD  
SHEET 2 OF 2

INLET TYPE GVOV (Grate Variable, Curb Opening Variable)

508

DATE: /2-1-69  
REV:  
SUPERSEDES: 200  
DATED: /2-1-66  
ORANGE CO NO. 304  
STATE OF CALIF 7-832.5  
THUS  
THUS