

12" WIDE X 6" THICK CONCRETE COLLAR WITH 3" ASPHALT CONCRETE OVERLAY (TYPICAL).

STANDARD CAST IRON ACCESSHOLE FRAME & COVER - SEE DWG. NO. S4.

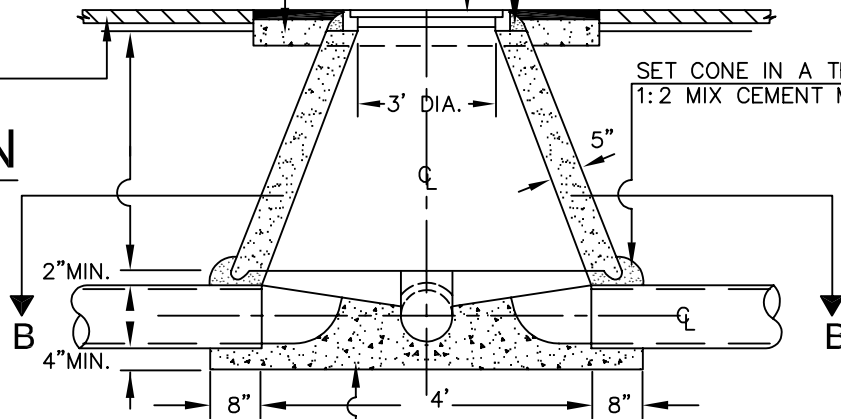
CEMENT IN PLACE WITH 1:2 MIX CEMENT MORTAR (TYPICAL).

PAVEMENT OR FINISH GRADE.

SET CONE IN A THICK BED OF 1:2 MIX CEMENT MORTAR

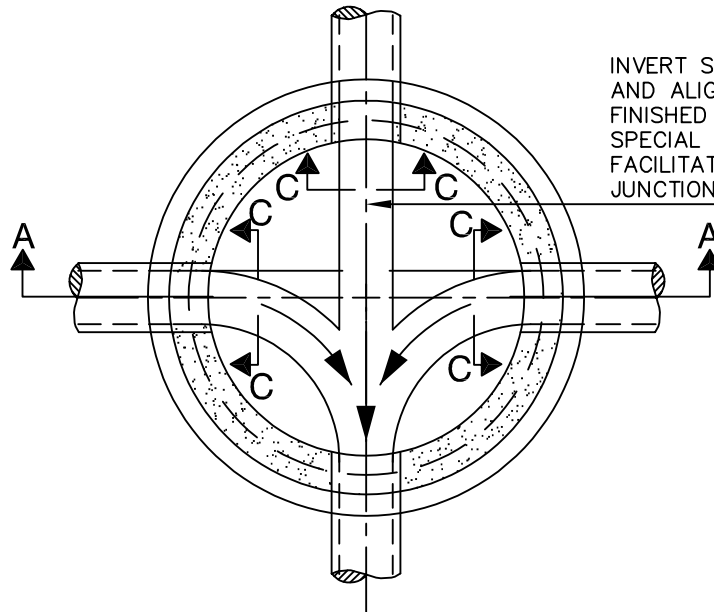
SECTION

A-A



POUR BASE AGAINST UNDISTURBED SOIL OR 6" MIN. ROCK BASE REQUIRED

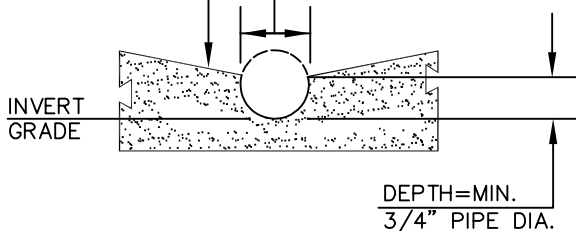
PLAN B-B



INVERT SHALL BE TRUE TO GRADE AND ALIGNMENT AND SHALL BE FINISHED WITH A SMOOTH SURFACE. SPECIAL CARE SHALL BE USED TO FACILITATE FLOW OF SEWAGE THROUGH JUNCTION CHANNELS.

MIN. SLOPE 1" PER FT.

WIDTH SHALL EQUAL INSIDE DIA OF PIPE.



SECTION C-C

NOTES:

ALL CAST IN PLACE CONCRETE SHALL BE TYPE 564-B-3250.

ACCESSHOLE SHALL BE CONSTRUCTED IN ACCORDANCE WITH ASTM DES-C-478.

STUB OUTS SHALL HAVE A MINIMUM LENGTH OF 2 FEET.

REV.	APPROVED	DATE	CITY OF CARLSBAD	
				6-04
			SHALLOW ACCESSHOLE	CITY ENGINEER
				DATE
				SUPPLEMENTAL STANDARD NO.
				S-3