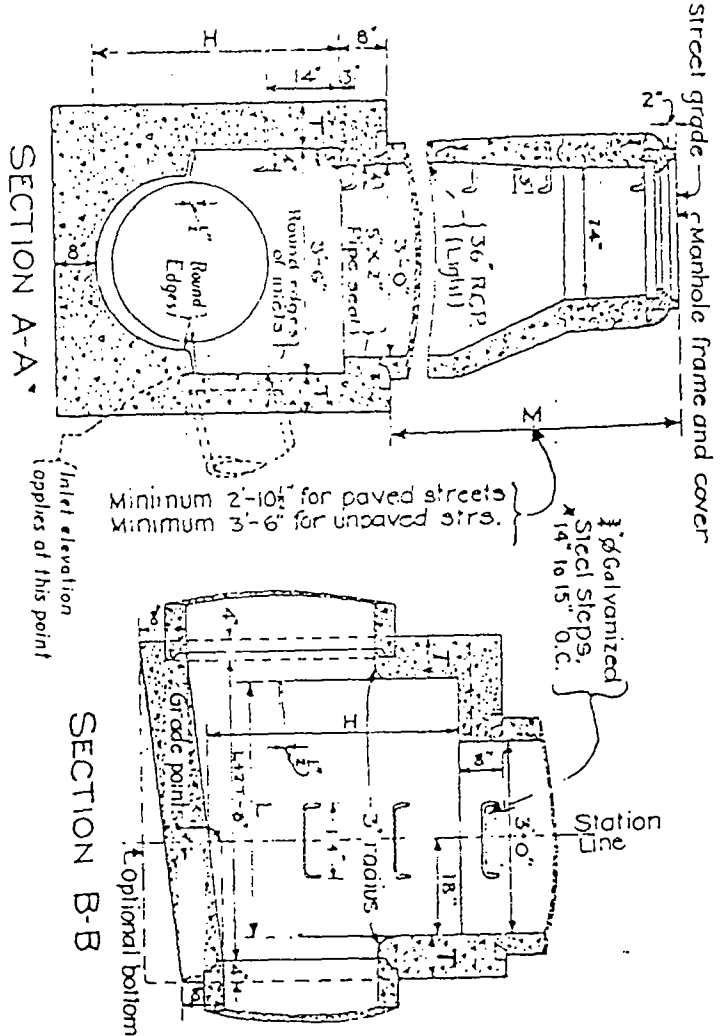


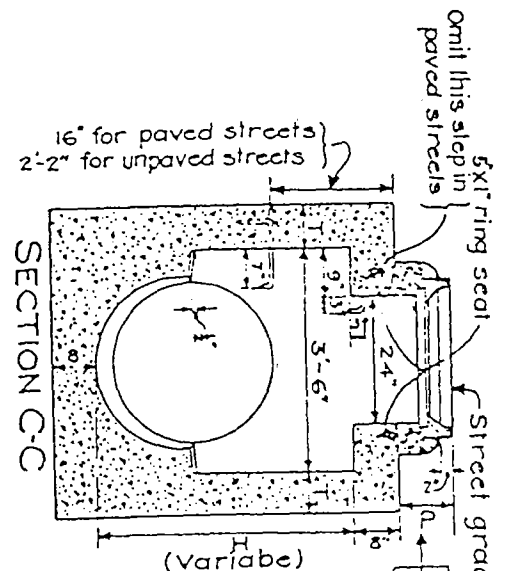
PLAN
(Shaft not shown)

DETAIL N PLAN
(Shaft not shown)



SECTION A-A

SECTION B-B



SECTION C-C

NOTES

1. H = HEIGHT SHALL NOT BE LESS THAN 4'-0"
2. L = LENGTH SHALL NOT BE LESS THAN 4'-0"
3. T = THICKNESS SHALL BE 8" WHEN H ≤ 8" AND 10" WHEN H > 8"
4. CLASS "B" CONCRETE TO BE USED (5.0 SACK)

For paved streets	Max/Min
11"	8"
For unpaved str.	16"
	15"

**CITY OF COLTON
PUBLIC WORKS DEPARTMENT**

DRAINAGE MANHOLE DETAILS

DRAWN BY	SCALE	DRAWING NO.
CHK'D	DATE	209
APP'D		

David H. ...