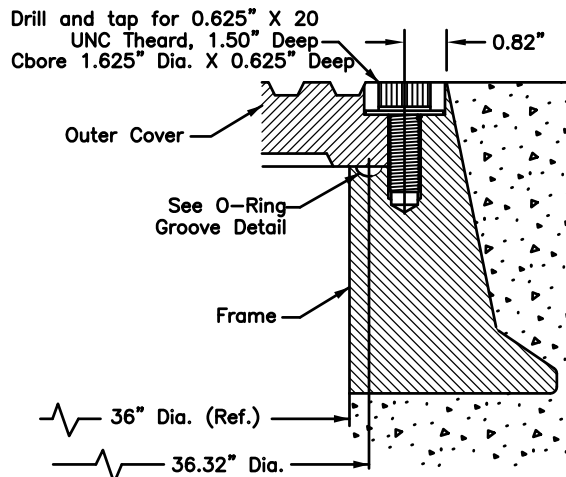
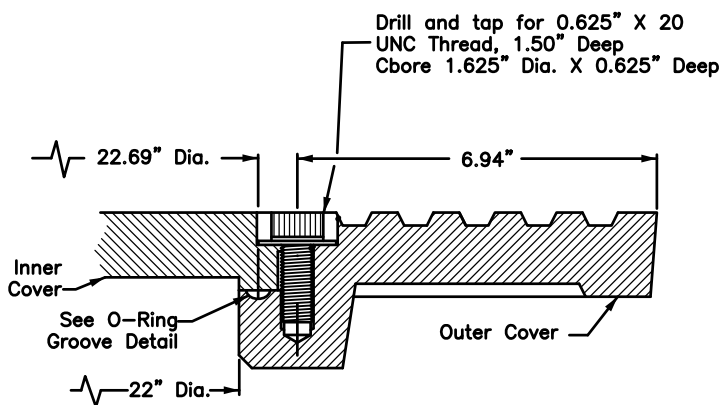


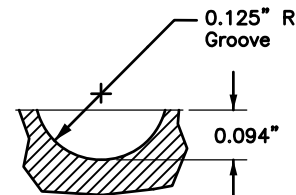
M-01 Detail:
COVER TO FRAME



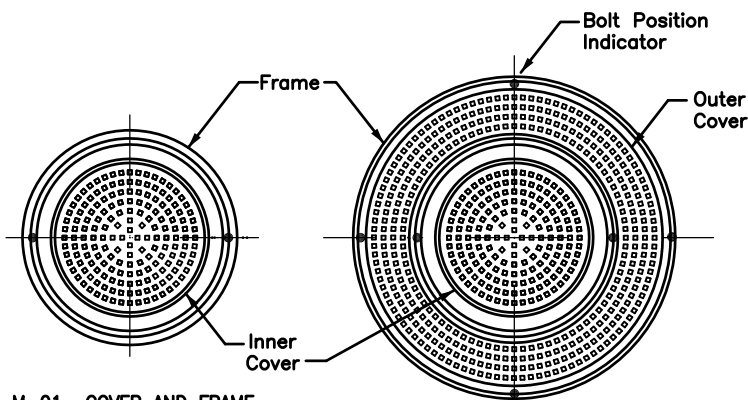
M-03A Detail:
OUTER COVER TO FRAME



M-03A Detail:
INNER COVER TO OUTER COVER



NEOPRENE O-RING
GROOVE DETAIL



M-01 COVER AND FRAME
BOLT PLACEMENT
(See Note 3)

M-03A CONCENTRIC COVERS AND FRAME
BOLT PLACEMENT
(See Note 3)

NOTES:

1. 0.625" X 20 UNC THREAD, 316 STAINLESS STEEL SOCKET HEAD CAP SCREW AND 1.50" O.D. X 0.687" I.D. X 0.078" THICK 316 STAINLESS STEEL WASHER.
2. 0.25" NEOPRENE O-RING GASKET SHALL BE GLUED INTO MACHINED GROOVE. GLUE SHALL MEET THE REQUIREMENTS OF MIL-M-81288 (AMEND. 1)
3. BOLTDOWN PATTERNS:
 - M-01 DETAIL (24" COVER & FRAME): INSTALL TWO (2) BOLTS AT 180 DEGREES.
 - M-03A DETAIL (CONCENTRIC COVERS): BETWEEN INNER AND OUTER COVERS INSTALL TWO (2) BOLTS AT 180 DEGREES.

Revision	By	Approved	Date
ORIGINAL		Parkinson	2/95
Updated		D. Gerschoffer	12/15
Reviewed		D. Gerschoffer	10/18

SAN DIEGO REGIONAL STANDARD DRAWING

MANHOLE COVER – LOCKING DEVICE

RECOMMENDED BY THE SAN DIEGO REGIONAL STANDARDS COMMITTEE

M. Stanton 10/25/2018

Chairperson R.C.E. 19246 Date

DRAWING NUMBER M-04