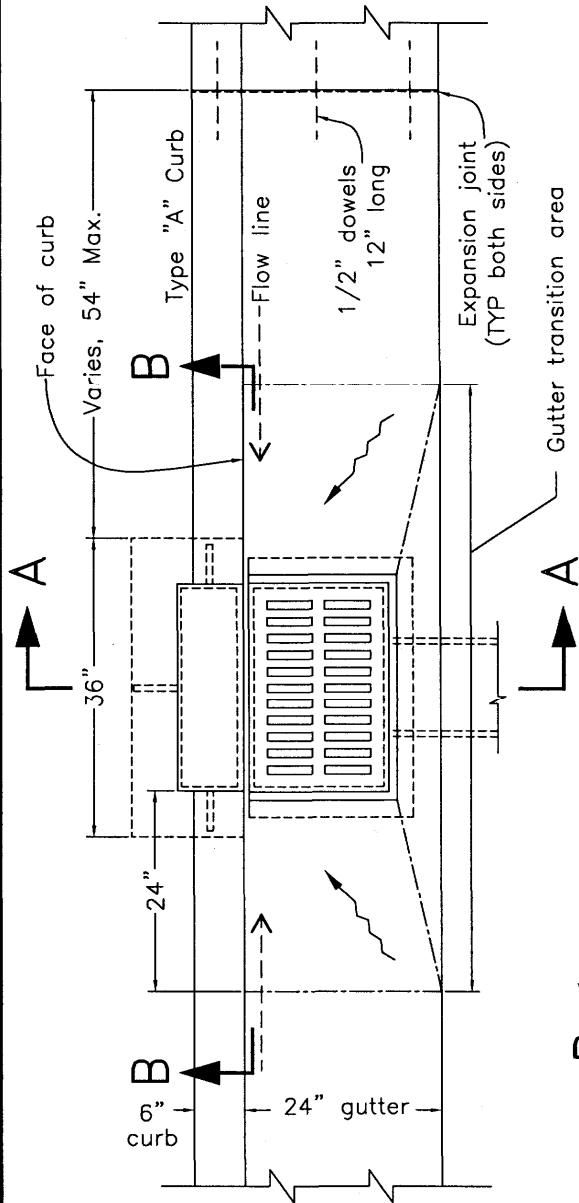
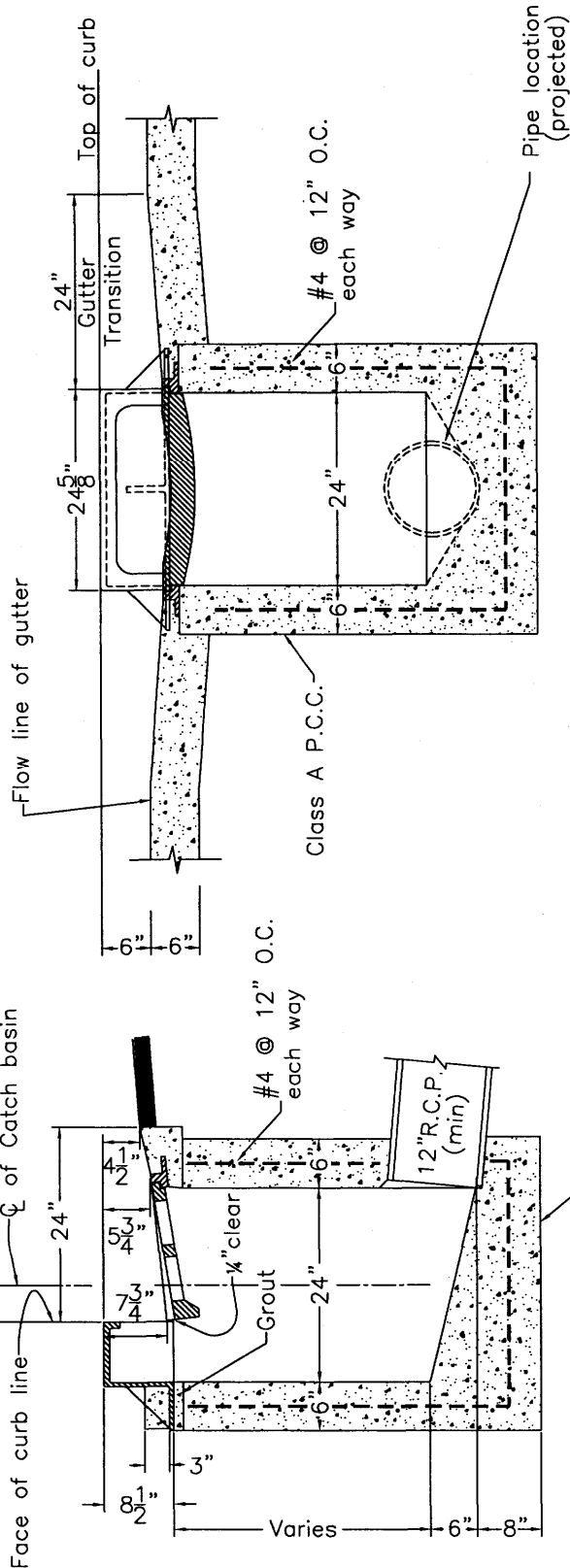


NOTES

1. This sheet to be used with Dwg. 303, Standard Hood, Frame & Grate.
2. Walls to be 6" reinforced P.C.C. (#4's @ 12" O.C. B.W.).
3. Box may be poured in place or pre-cast.
4. Catch basin to be centered 3" from curb return at inter-section corners.
5. Stencil curb adjacent to catch basin with "No Dumping! Flows to [creek-name]" message.



PLAN



SECTION A-A

SECTION B-B

Rev	By	Date
0	PAP	12/14/92
1	MAR	01/02/02

Scale: NTS

Catch Basin Installation
Type "A" Curb
 City of Palo Alto Standard

Approved by: *[Signature]*
 PE No. 35411
 Date 5/14/07
 Dwg No. 301