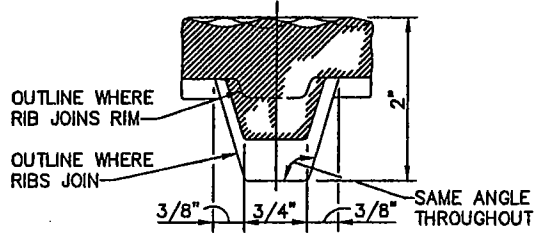
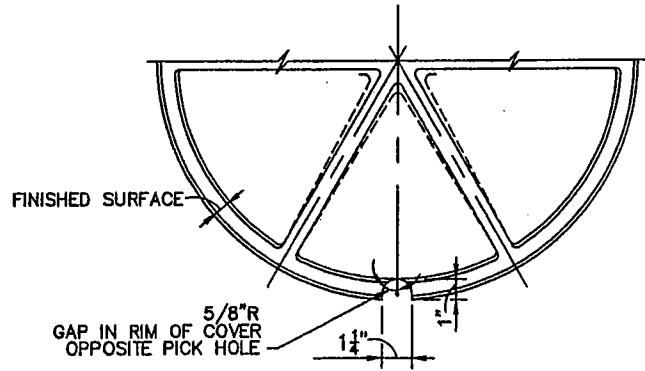
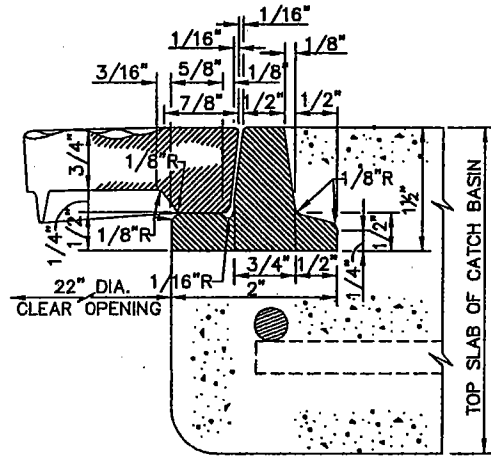
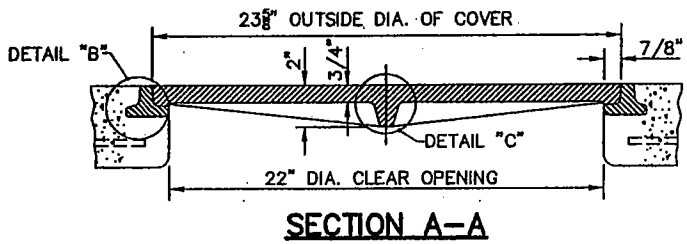
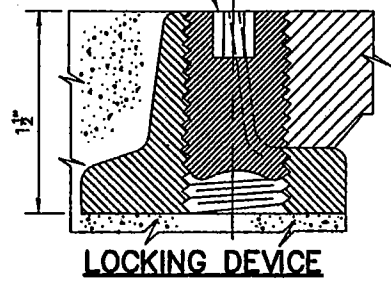
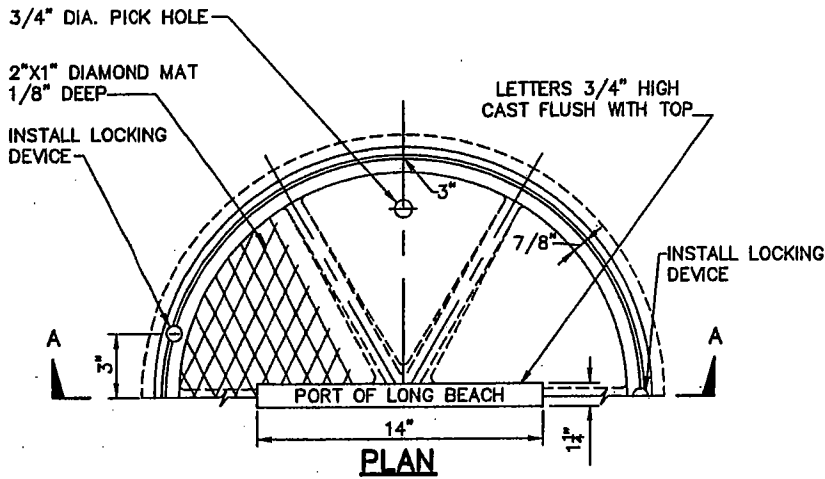


DRILL AND TAP HOLE AND INSTALL
 $\frac{3}{4}$ " X $1\frac{1}{2}$ " STAINLESS STEEL SOCKET SET
 SCREW WITH $\frac{3}{8}$ " RECESSED HEX
 HOLE. ALL THREADS SHALL BE N.C.

DRAFT



BOTTOM OF MANHOLE COVER

DETAIL "C"

24" DIAMETER CLEAR OPENING

THE PORT OF LONG BEACH ENGINEERING DIVISION

REVISIONS		CATCH BASIN MANHOLE FRAME AND COVER	STANDARD PLAN
NO.	DATE		D-14
1			
2			
3			
APPROVED BY: _____		R.E. NO.: _____	DATE: _____
CHIEF HARBOR ENGINEER			1 OF 4