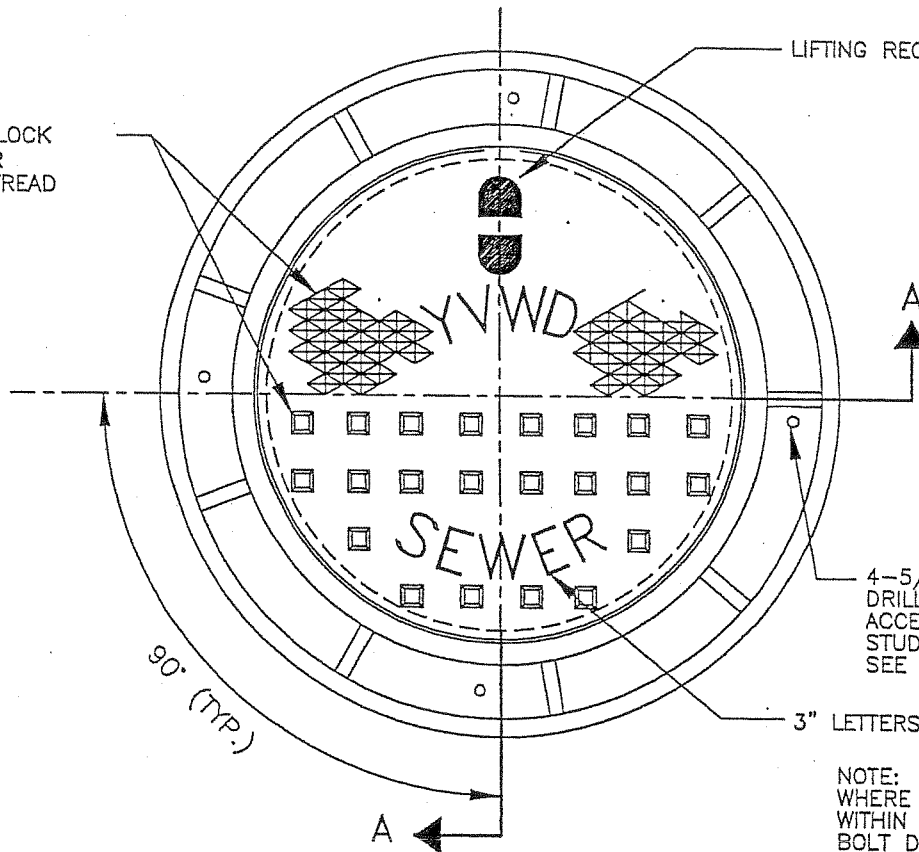


SQUARE BLOCK  
OR  
DIAMOND TREAD

LIFTING RECEPTACLE

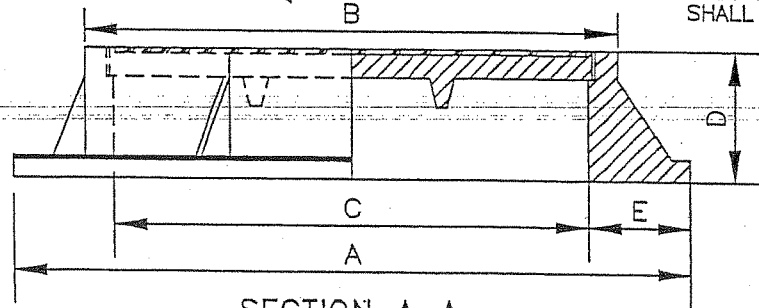


4-5/8" DIA. HOLES  
DRILLED IN FRAME TO  
ACCEPT 1/2" ADJUSTABLE  
STUD FOR GRADE RING.  
SEE NOTE 2 BELOW

3" LETTERS

NOTE:  
WHERE MANHOLE IS LOCATED  
WITHIN AN EASEMENT  
BOLT DOWN FRAME & COVER  
SHALL BE REQUIRED.

SIZE	24	30
A	32	38
B	27 1/4	33
C	24	30
D	3.5	6
E	4	4



SECTION A-A

SEWER MAIN (INCHES)	MAX BRANCH SIZE (INCHES)	MANHOLE SIZE (INCHES)	FRAME & COVER (INCHES)
8 - 15	10	48	24
18 - 21	12	60	24
24 - 36	15	72	30

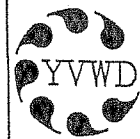
- 48" & 60" MANHOLES SHALL HAVE 24" COVERS. 72" MANHOLES SHALL HAVE 30" COVERS.
- WHERE FRAME AND COVER ARE SET 18" ABOVE GRADE, 4-1/2" DIA. INSERTS FOR ADJUSTABLE STUDS SHALL BE CAST IN TOP GRADE RING, ALIGNED AS DETAILED ABOVE. FRAME SHALL BE BOLTED TO GRADE RING.

YUCAIPA VALLEY WATER DISTRICT

TRAFFIC MANHOLE FRAME & COVER

NO.	BY	REVISIONS DATE	APPROVED	DRAWN	CHECKED	DATE
				---	---	DEC., 96
						NO SCALE

APPROVED BY ENGINEERING DEPARTMENT  
*Ray Jure* ENGINEER JUNE., 98  
 DATE  
 ADOPTED BY BOARD OF DIRECTORS  
*Steve Lopez* PRESIDENT JUNE., 98  
 DATE



S-7

SHEET 1 OF 1