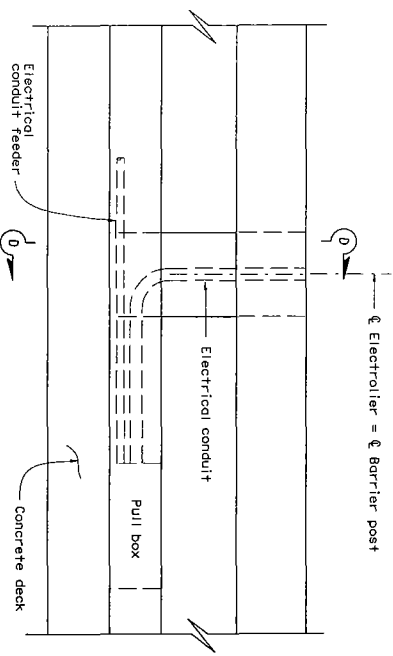


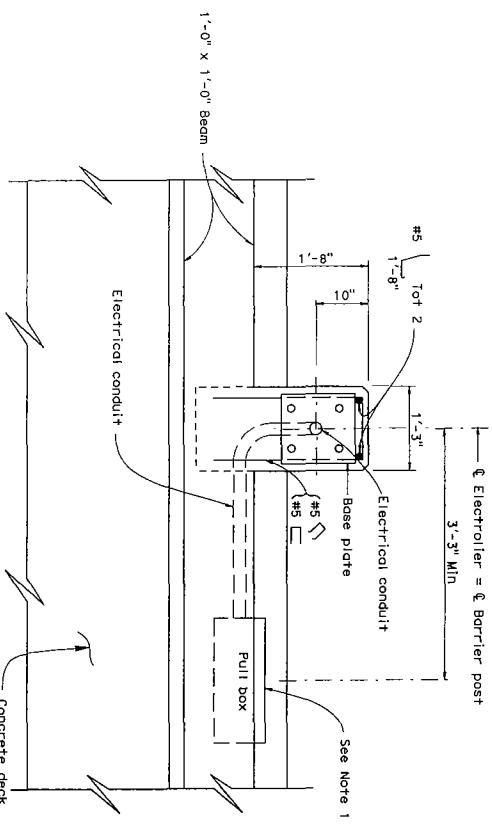
SECTION D-D

BARRIER MODIFICATION FOR ELECTROLINER

See Note 4



ELEVATION



PLAN

Bend #5 and #8 Reinf in curb as required to clear pull box.

|      |        |       |               |       |             |
|------|--------|-------|---------------|-------|-------------|
| DIST | COUNTY | ROUTE | 8058          | BLUES | SHEET TOTAL |
|      |        |       | TOTAL PROJECT |       | NO. SHEETS  |

REGISTERED CIVIL ENGINEER

MOY 1, 2006

PLANS APPROVAL DATE

The State of California or its officers or agents shall not be responsible for the accuracy or completeness or adequacy of these plans.

To get the full story visit us at <http://www.fdot.com>

REGISTERED PROFESSIONAL ENGINEER

TRUCK SHREK

NO. 4282

EXP. 03/31/08

STATE OF CALIFORNIA

ELECTROLINER NOTES:

1. See Project Plans for electroliner and pull box locations.
2. For electrical details, see Standard Plans ES-9A, 9B, 9C, 9D, and 9E.
3. This barrier is designed to accommodate only two (2) 1 1/2" electrical conduit for electroliners on the structure. Any transporting of larger conduit is restricted to within the structure.
4. Only the additional reinforcing for the electroliner pedestal is shown. For other typical reinforcing for Type 80 Barrier, see Standard Plan B11-60.

CONCRETE BARRIER  
TYPE 80  
(Sheet 2 of 2)

NO SCALE

B11-61