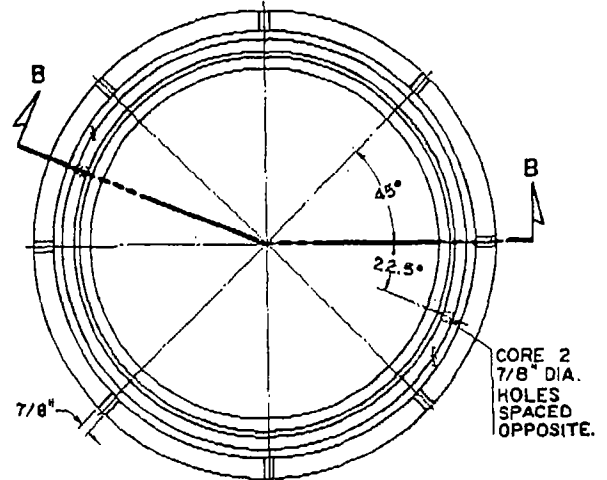
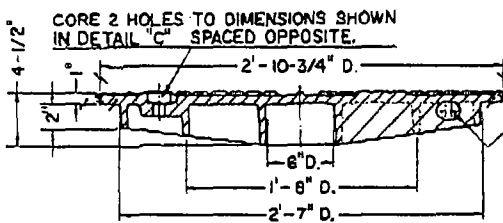


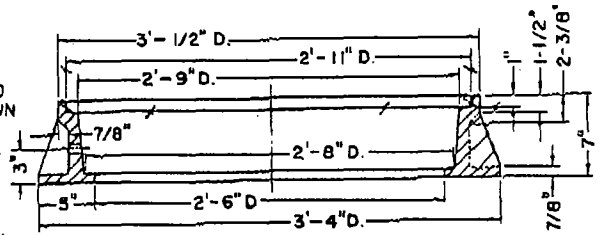
PLAN COVER TOP



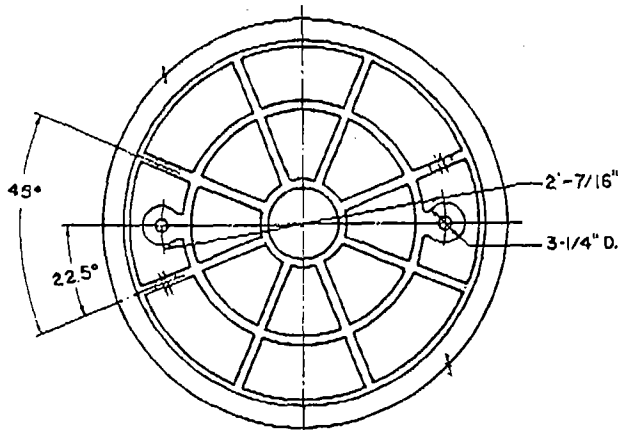
PLAN FRAME



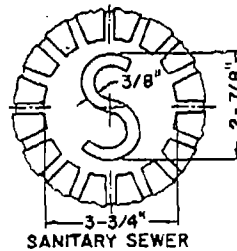
SECTION A-A



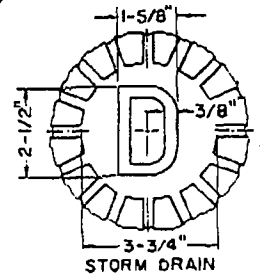
SECTION B-B



COVER, UNDERSIDE



SANITARY SEWER

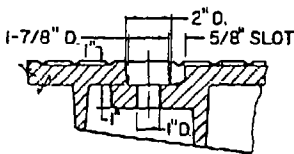


STORM DRAIN

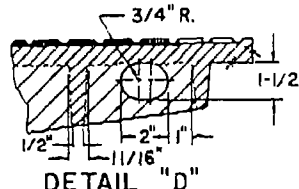
DETAILS OF LETTERS

**NOTES**

1. THE MANHOLE FRAME AND COVER SHALL BE MADE OF GRAY CAST IRON CONFORMING TO THE REQUIREMENTS OF ASTM A-48, CLASS 30.
2. ALL PARTS OF THE MANHOLE FRAME AND COVER EXCEPT MACHINED SURFACES SHALL BE COATED WITH ASPHALTUM PAINT.
3. RAISED SURFACES OF LETTERS SHALL BE FLUSH WITH SURFACES OF THE RAISED BLOCK TREADS.
4. ALL RADII 1/8" UNLESS OTHERWISE SPECIFIED.
5. DRAFT TO BE 1-1/2° UNLESS OTHERWISE SPECIFIED.



DETAIL "C"  
PICKHOLE



DETAIL "D"  
HOLE & TYPICAL RIB

**LARGE MANHOLE FRAME AND COVER**

REVISIONS		
MARK	DATE	DESCRIPTION

**CITY OF BEVERLY HILLS, CALIFORNIA**

DEPARTMENT OF PUBLIC WORKS

ENGINEERING DIVISION

RECOMMENDED George A. Cell DATE 8/8/59  
CITY ENGINEER

APPROVED Edward E. Cullen DATE 2/1/59  
PUBLIC WORKS DIRECTOR

STANDARD DRAWING

502