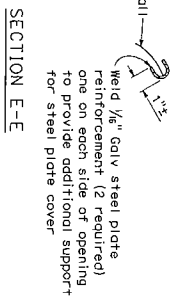
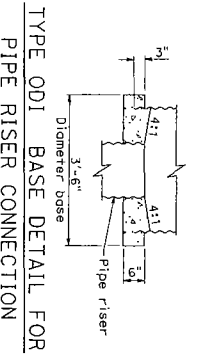
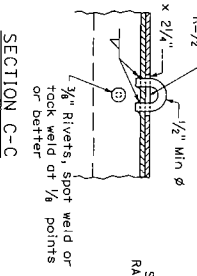
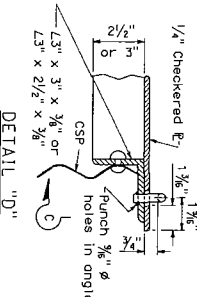
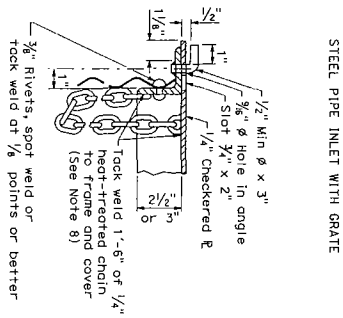
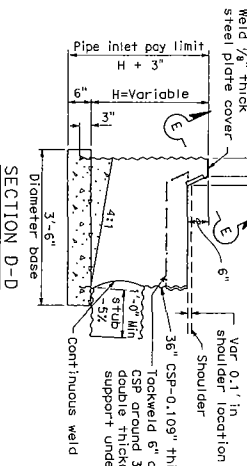
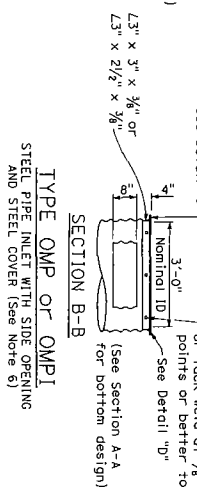
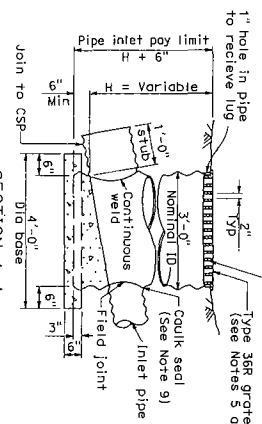
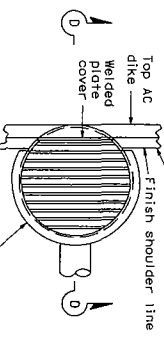
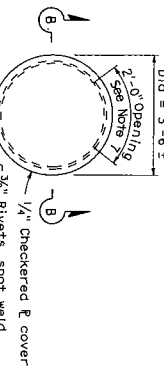
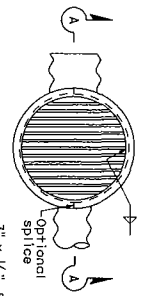


DIST. COUNTY	ROUTE	ROSS PROJECT NO.	SHEET NO.
		TOTAL SHEETS	NO. SHEETS
REGISTERED PROFESSIONAL ENGINEER State of California License No. C45471 Date: 5-26-07 City: Ojai State: California To go to the Contract and also go to: <a href="http://www.dgs.ca.gov">http://www.dgs.ca.gov</a>			



- NOTES:
1. For Details of concrete pipe inlets, see Standard Plan D75B.
  2. For details of ladder and steps and when ladder or steps are required, see Standard Plan D75C.
  3. Inlet pipes shall not protrude into basin.
  4. Except for inlets used for junction boxes, basin floors shall have minimum slope of 4:1 from all directions toward outlet pipe, and a wood trowel finish.
  5. See Standard Plans D77A and D77B for Grate and Frame Details and weights of Miscellaneous Iron and Steel.
  6. Designation of Type OMP1 pipe inlets on plans indicates trash racks are to be furnished and installed on all side openings. See Standard Plan D75C for trash rack details.
  7. More than one side opening may be required. Location and number as ordered by the Engineer.
  8. Chain to be provided when specified.
  9. Caulk seal with pliable mixture of sand, portland cement, and asbestos fibers. Apply 1/2" thick on top and 1/4" on bottom. 3-5 parts sand, and 1 1/2 parts SSI emulsified asphalt.
  10. Place pipe so bars of grate will be parallel with main surface flow.

STATE OF CALIFORNIA  
DEPARTMENT OF TRANSPORTATION  
**STEEL PIPE INLETS**

NO SCALE  
**D75A**