

FIRE HYDRANT BODY
FURNISHED AND INSTALLED
BY WATER DEPARTMENT

19 INCHES UNLESS OTHERWISE
NOTED ON PLANS

FIRE HYDRANT RISER
EXTENSION

STREET GRADE

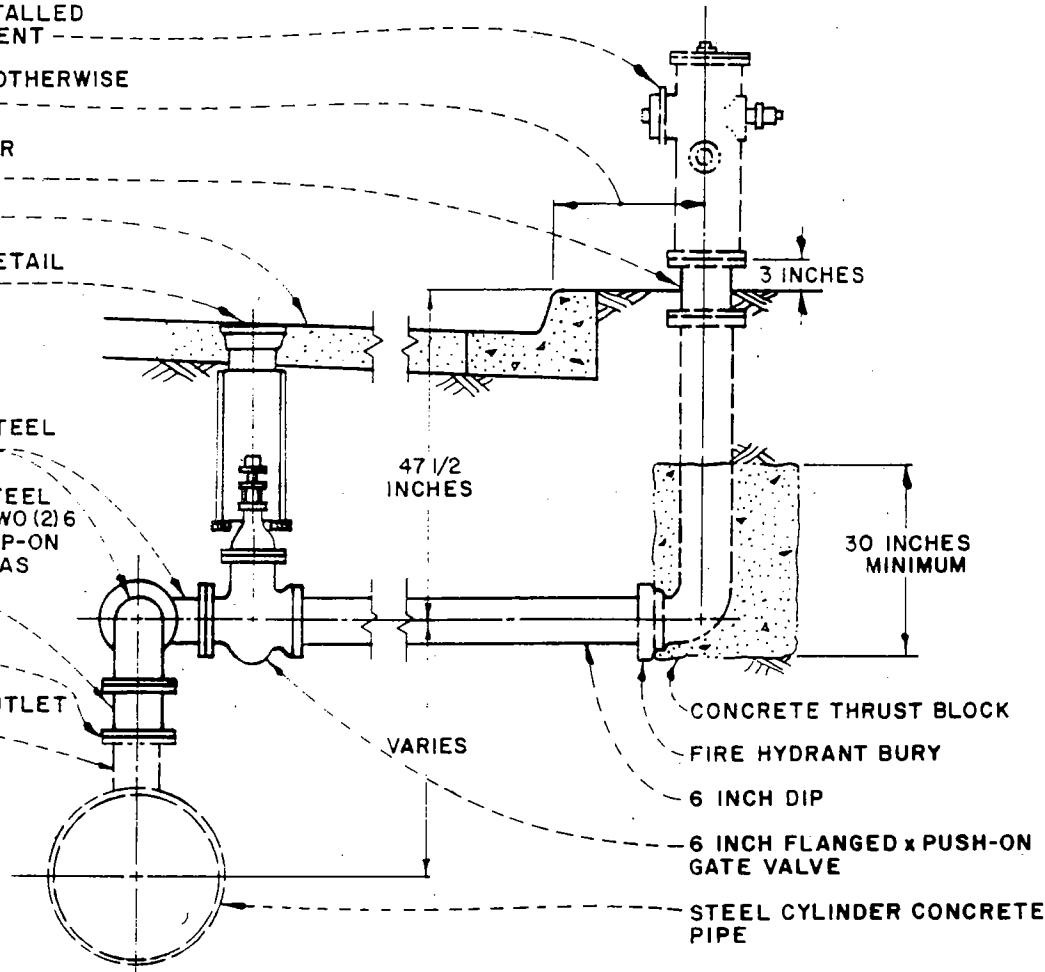
FOR GATE BOXING DETAIL
REFER TO WDS-119

6 INCH x 90° CAST STEEL
LONG RADIUS BEND

6 INCH STANDARD STEEL
PIPE SPOOL WITH TWO (2) 6
INCH 150 POUND SLIP-ON
FLANGES. LENGTH AS
REQUIRED.

FLANGE INSULATION
SEE NOTE 4

6 INCH FLANGED OUTLET
SEE WDS-203
(SIMILAR)



ELEVATION B-B

2/3 DIAMETER OF
PIPE ("D")

3 INCHES

6 INCHES

"D" = OUTSIDE DIAMETER
OF STEEL CYLINDER
CONCRETE PIPE

6x6 INCH REDWOOD
BLOCK

PORTLAND CEMENT
CONCRETE PAD

DETAIL 1

NOTES:

1. FLANGED SPOOL AND 90° BENDS SHALL HAVE 1/4 INCH LINING AND 1 INCH COATING OF CEMENT MORTAR REINFORCED WITH 1x2 INCH NUMBER 12 GAUGE GALVANIZED WELDED WIRE FABRIC.
2. COAT ALL EXPOSED STEEL NOT IN CONTACT WITH SOIL WITH TWO (2) COATS OF KEYSITE 750, MINIMUM DRY-FILM THICKNESS OF FIVE (5) MILS EACH COAT, FINAL COAT TO BE MINIMUM TEN (10) AND MAXIMUM SIXTEEN (16) MILS.
3. ALL FLANGE DRILLINGS SHALL BE IN CONFORMANCE WITH AMERICAN STANDARDS ASSOCIATION CLASS 125.
4. FLANGE INSULATING SETS SHALL BE POUND PER SQUARE INCH SERIES 15 (150 POUND) WITH TYPE E ASBESTOS GASKET, MYLAR SLEEVES AND DOUBLE WASHERS OR EQUAL.
5. COAT ALL FITTINGS, VALVES, AND BOLTED COUPLINGS WITH NO-OX-ID A SPECIAL COMPOUND AND WRAP WITH NO-OX-ID TAPE; THEN ENCASE WITH POLYETHYLENE WRAP.

LONG BEACH WATER DEPARTMENT

**FIRE HYDRANT ASSEMBLY
VERTICAL OUTLET**

DESIGNED BY	RECOMMENDED
CHECKED BY MANABAT	<i>Don Davis</i>
DATE 4-7-87	BUREAU ENGINEER C.E. NO. 19113
SCALE NONE	APPROVED
SUPERSEDES DWG. NO.	<i>L.C. Allen</i>
B-454	GENERAL MANAGER C.E. NO. 19944
DRAWN BY STANLEY	SHEET
	2 OF 2
	WDS-213