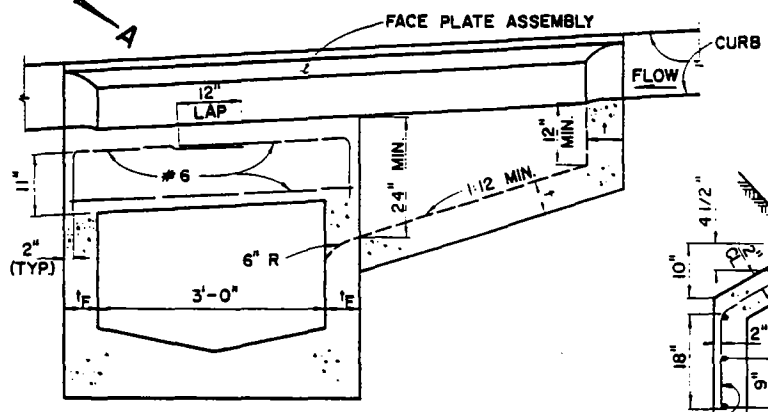
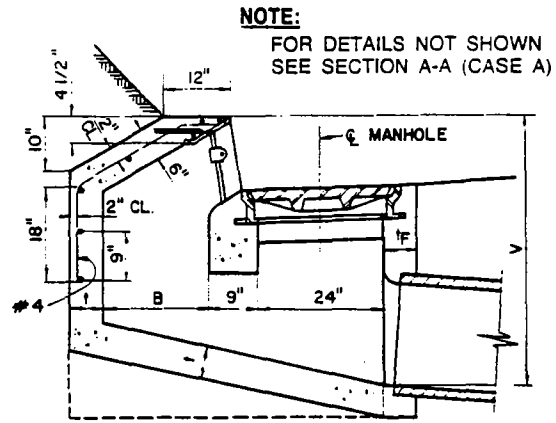


**DOWEL DETAIL**

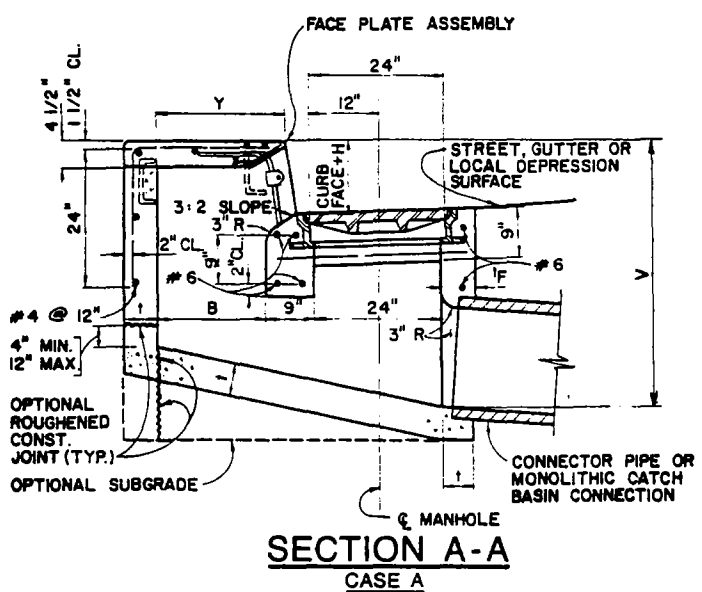


**SECTION B-B**



**SECTION A-A  
CASE B**

**NOTE:**  
FOR DETAILS NOT SHOWN  
SEE SECTION A-A (CASE A)



**SECTION A-A  
CASE A**

STRUCTURAL DATA						
WALL AND SLAB DIMENSIONS AND REINFORCEMENT REQUIREMENTS						
MAX. W	MAX. V	t	t <sub>F</sub>	REINFORCEMENT REQUIRED IN		
				FRONT WALL	REAR WALL	BOTTOM SLAB
3.5'	8'	6"	6"	NO	REINFORCEMENT	REQUIRED
3.5'	12'	8"	8"			
7'	6'	6"	6"			
7'	12'	8"	8"			
14'	4'	6"	6"			
14'	8'	6"	8"	REINFORCEMENT	REQUIRED	
14'	12'	8"	10"			
21' AND 28'	4'	6"	6"			
	6'	6"	8"			
	8'	8"	8"			
21' AND 28'	10'	8"	10"	REINFORCEMENT	REQUIRED	
	12'	8"	10"			

FOR W > 28', V > 12' OR B > 2' SEE PROJECT PLANS

<b>REVISIONS</b> NO. DATE		<b>CITY OF LONG BEACH, CALIFORNIA</b> DEPARTMENT OF PUBLIC WORKS		<b>STANDARD PLAN NO.</b>	
1 2 3 4		<b>CATCH BASIN NO. 7 CURB OPENING WITH MANHOLE IN STREET TYPE</b>		<b>607</b>	
APPROVED BY: <i>Edward J. Putz</i>		DATE: <u>6-26-89</u>		<b>SHEET</b>	
CITY ENGINEER R.E. No. <u>24233</u>		EX. DATE <u>12-31-89</u>		<b>1 OF 2</b>	

**NOTES:**

1. WHERE THE BASIN IS TO BE CONSTRUCTED WITHIN THE LIMITS OF EXISTING OR PROPOSED SIDEWALK OR IS CONTIGUOUS TO SUCH SIDEWALK, THE TOP SLAB OF THE BASIN MAY BE POURED EITHER MONOLITHIC WITH THE SIDEWALK OR SEPARATELY, USING THE SAME CLASS OF CONCRETE AS IN THE BASIN. WHEN POURED MONOLITHICALLY, THE SIDEWALK SHALL BE PROVIDED WITH A WEAKENED PLANE OR A 1-INCH DEEP SAWCUT CONTINUOUSLY AROUND THE EXTERNAL PERIMETER OF THE CATCH BASIN WALLS, INCLUDING ACROSS THE FULL WIDTH OF THE SIDEWALK. SURFACE OF ALL EXPOSED CONCRETE SHALL CONFORM IN SLOPE, GRADE, COLOR, FINISH, AND SCORING TO EXISTING OR PROPOSED CURB AND WALK ADJACENT TO THE BASIN.
2. ALL CURVED CONCRETE SURFACES SHALL BE FORMED BY CURVED FORMS, AND SHALL NOT BE SHAPED BY PLASTERING.
3. FLOOR OF BASIN SHALL BE GIVEN A STEEL TROWEL FINISH. FLOOR OF MANHOLE CHAMBER SHALL HAVE A LONGITUDINAL AND LATERAL SLOPE OF 1:12 MINIMUM AND 1:3 MAXIMUM. SLOPE FLOOR FROM ALL DIRECTIONS TO THE OUTLET.
4. CATCH BASIN SHALL BE CASE A UNLESS OTHERWISE SPECIFIED.
5. DIMENSIONS:  
 W = 7 FEET.  
 B = 20 INCHES.  
 Y = 24 INCHES.  
 V = THE DIFFERENCE IN ELEVATION BETWEEN THE TOP OF THE CURB AND THE INVERT OF THE CATCH BASIN AT THE OUTLET = 4.5 FEET.  
 V<sub>i</sub> = THE DIFFERENCE IN ELEVATION BETWEEN THE TOP OF THE CURB AND THE INVERT OF THE INLET. NOTED ON THE PROJECT PLANS.  
 H = NOTED ON THE PROJECT PLANS.  
 A = THE ANGLE, IN DEGREES, INTERCEPTED BY THE CENTERLINE OF THE CONNECTOR PIPE AND THE CATCH BASIN WALL TO WHICH THE CONNECTOR PIPE IS ATTACHED.
6. PLACE CONNECTOR PIPES AS INDICATED ON THE PROJECT PLANS. UNLESS OTHERWISE SPECIFIED, THE CONNECTOR PIPE SHALL BE LOCATED AT THE DOWNSTREAM END OF THE BASIN. WHERE THE CONNECTOR PIPE IS SHOWN AT A CORNER, THE CENTERLINE OF THE PIPE SHALL INTERSECT THE INSIDE CORNER OF THE BASIN. THE PIPE MAY BE CUT AND TRIMMED AT A SKEW NECESSARY TO INSURE MINIMUM 3-INCH PIPE EMBEDMENT, ALL AROUND, WITHIN THE CATCH BASIN WALL, AND 3-INCH RADIUS OF ROUNDING OF STRUCTURE CONCRETE, ALL AROUND, ADJACENT TO PIPE ENDS. A MONOLITHIC CATCH BASIN CONNECTION SHALL BE USED TO JOIN THE CONNECTOR PIPE TO THE CATCH BASIN WHENEVER ANGLE "A" IS LESS THAN 70 DEGREES OR GREATER THAN 110 DEGREES, OR WHENEVER THE CONNECTOR PIPE IS LOCATED IN A CORNER. THE OPTIONAL USE OF A MONOLITHIC CATCH BASIN CONNECTION IN ANY CASE IS PERMITTED. MONOLITHIC CATCH BASIN CONNECTIONS MAY BE CONSTRUCTED TO AVOID CUTTING STANDARD LENGTHS OF PIPE.
7. STEPS SHALL BE LOCATED AS SHOWN. IF THE CONNECTOR PIPE INTERFERES WITH THE STEPS, THEY SHALL BE LOCATED ON THE FRONT WALL OF THE MANHOLE CHAMBER OR THE DOWNSTREAM WALL OF THE MANHOLE CHAMBER AND THE MANHOLE MOVED DOWNSTREAM 12 INCHES. STEPS SHALL BE SPACED 12 INCHES APART. THE TOP STEP SHALL BE 7 INCHES BELOW THE TOP TO THE MANHOLE AND PROJECT 2-1/2 INCHES. ALL OTHER STEPS SHALL PROJECT 5 INCHES.
8. DOWELS ARE REQUIRED AT EACH CORNER AND AT 7 FEET ON CENTER (MAXIMUM) ALONG THE BACKWALL.
9. THE FOLLOWING STANDARD PLANS ARE INCORPORATED HEREIN:  
 609 MONOLITHIC CATCH BASIN CONNECTION  
 610 CATCH BASIN REINFORCEMENT  
 611 CATCH BASIN FACE PLATE ASSEMBLY AND PROTECTION BAR  
 616 24-INCH MANHOLE FRAME AND COVER  
 615 STEEL STEP

REVISIONS		CITY OF LONG BEACH, CALIFORNIA DEPARTMENT OF PUBLIC WORKS	STANDARD PLAN NO.
NO.	DATE		
1		CATCH BASIN NO. 7 CURB OPENING WITH MANHOLE IN STREET TYPE	607
2			
3			
4			
APPROVED BY: <i>Edward J. Putz</i>		DATE: 6-26-89	SHEET
CITY ENGINEER R.E. No. 24233		EX. DATE 12-31-89	2 OF 2