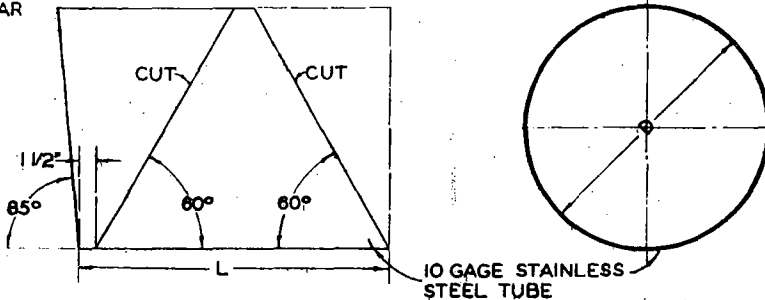
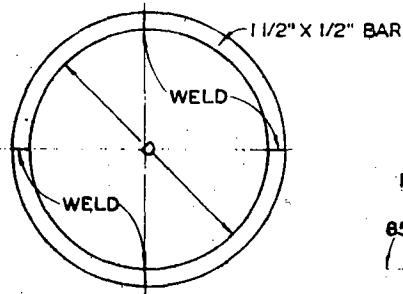
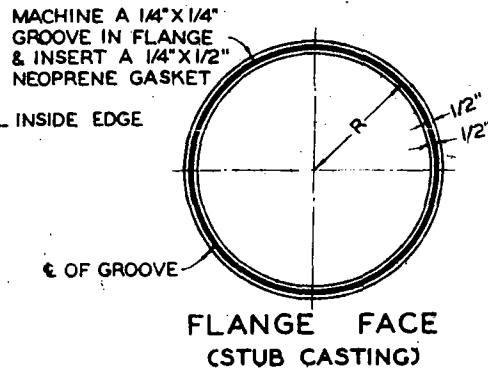
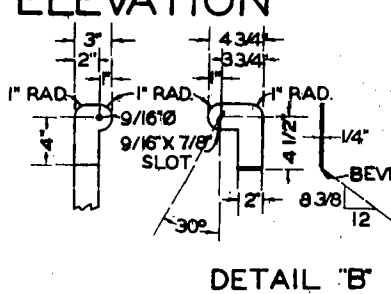
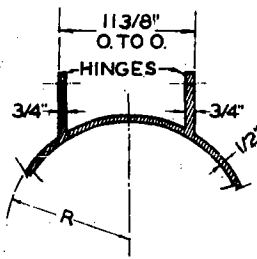
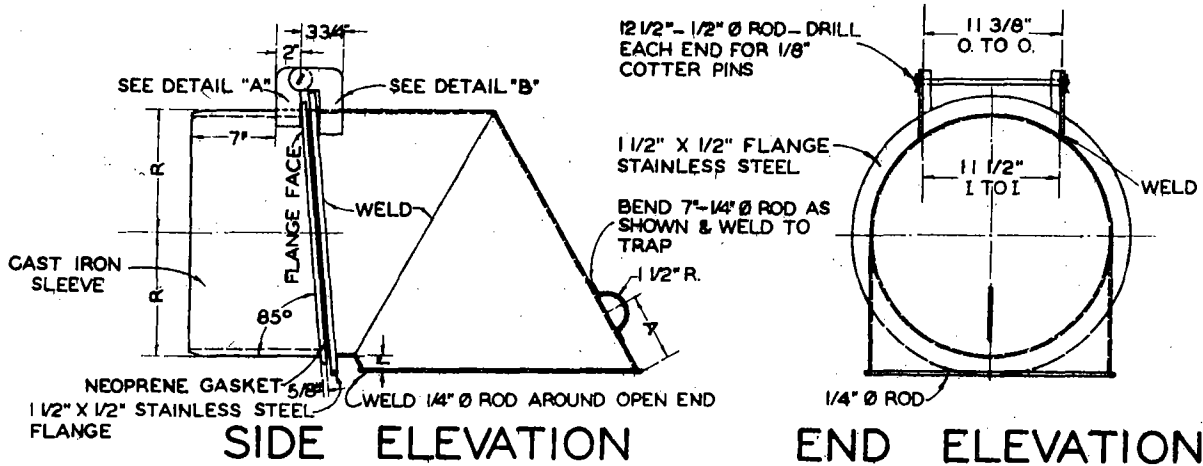


# LARGE GAS TRAP

NOTE: STAINLESS STEEL SHALL BE A.I.S.I. TYPE 316 OR A.S.T.M. A 240-49 TYPE 316.



DIMENSIONS OF TRAP				
INLET DIAM.	A	D	R	L
15"	4"	14"	7 1/4"	19 1/16"
18"	5"	17"	8 3/4"	22 9/16"
21"	6"	20"	10 1/4"	26"

NOTE: - ALL MATERIAL TO BE STAINLESS STEEL EXCEPT AS NOTED.

DEPARTMENT OF COUNTY ENGINEER - COUNTY OF LOS ANGELES  
SANITATION DIVISION

COUNTY ENGINEER  
STANDARD

S-19

*B. H. Hughes*  
DIVISION ENGINEER

APPROVED

*John A. Jamieson*  
COUNTY ENGINEER

DATE OCTOBER 23, 1964

REVISED TO: