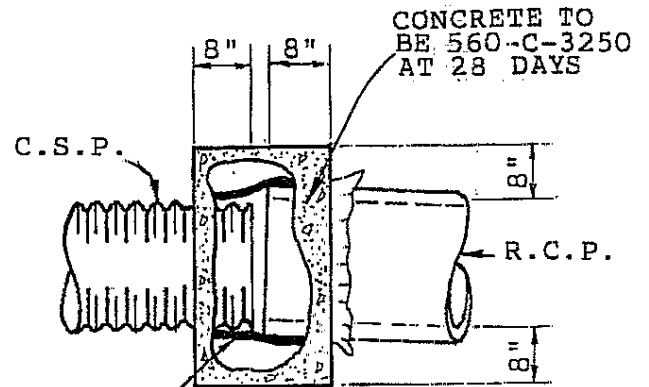
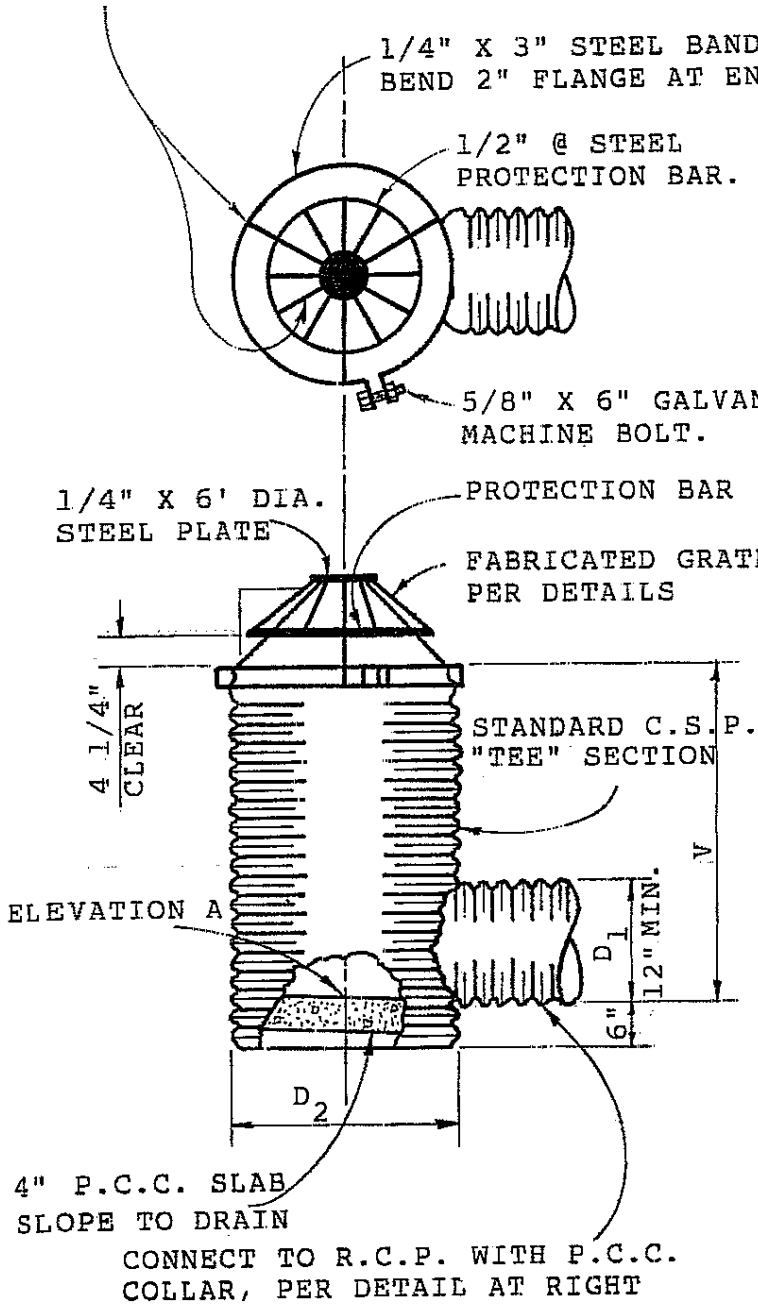


1/2" @ STEEL BARS, WELD TO PROTECTION BARS AT 6" O.C. AND TO BAND AT 120° (3 LOCATIONS). BEND STEEL PLATE AND WELD.

NOTES:

1. V, D₁, D₂ and elevation "A" shall be shown on the construction plans.
2. Grate assembly shall be fabricated to fit C.S.P. of size "D₂".
3. Grate assembly shall be galvanized after fabrication.
4. R.C.P. shall be sized to fit future catch basin design.
5. Grate assembly shall be fabricated to fit the outside diameter of standard junction structure shaft if indicated on construction plans.



WRAP WITH ONE THICKNESS OF 15 POUND FELT PAPER, SHAPE OPENING FOR SMOOTH JOINT.

COLLAR DETAIL

APPROVED <i>Ray W. [Signature]</i> 1-28-89 CITY ENGINEER DATE		CITY OF CHINO PUBLIC WORKS DEPARTMENT	
DATE	REVISION	BY	STANDARD DRAWING
			TEMPORARY C.S.P. DROP INLET
			No. 355