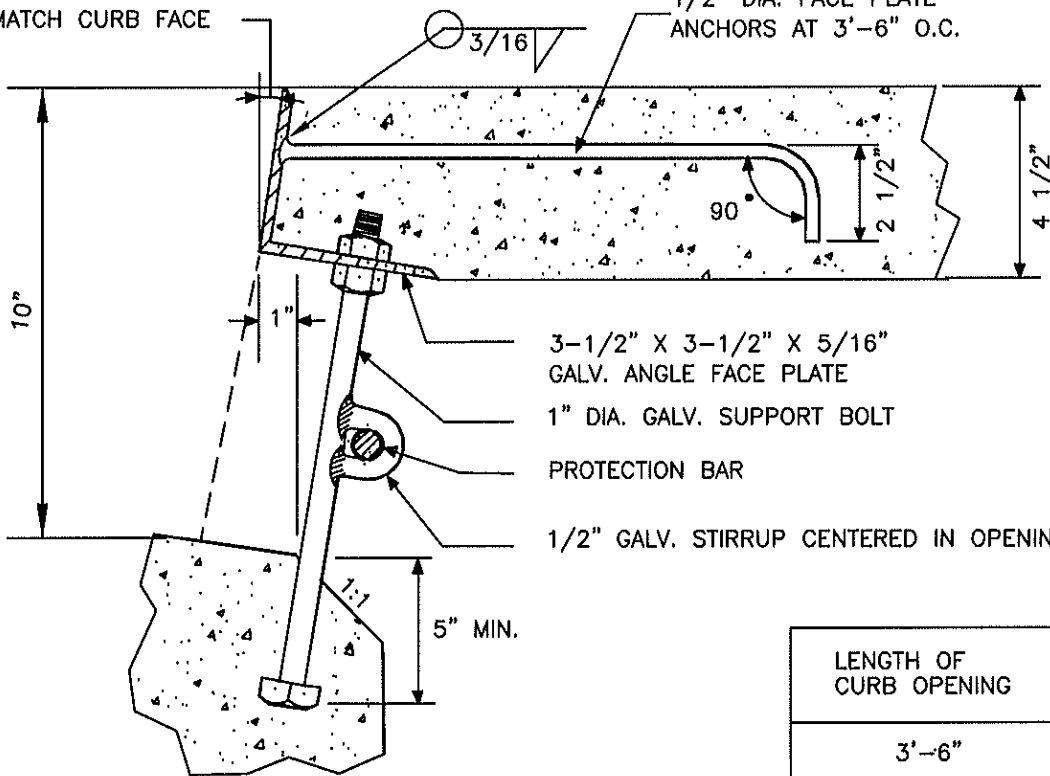


ANGLE TO
MATCH CURB FACE

1/2" DIA. FACE PLATE
ANCHORS AT 3'-6" O.C.



3-1/2" X 3-1/2" X 5/16"
GALV. ANGLE FACE PLATE

1" DIA. GALV. SUPPORT BOLT

PROTECTION BAR

1/2" GALV. STIRRUP CENTERED IN OPENING

5" MIN.

FACE PLATE ANCHORAGE
AND CURB SUPPORT DETAIL

LENGTH OF CURB OPENING	# OF ANCHORS
3'-6"	2
7'-0"	3
10'-0"	4
14'-0"	5
21'-0"	7

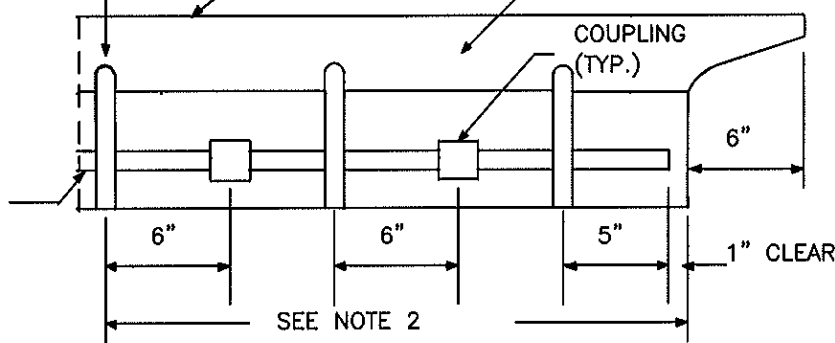
SUPPORT BOLTS
AS NEEDED

TOP OF CURB LINE

GALV. FACE PLATE

COUPLING
(TYP.)

3/4" DIA.
PROTECTION BAR



PROTECTION BAR DETAIL

REVISIONS

CITY OF FOUNTAIN VALLEY

STANDARD
PLAN NO.

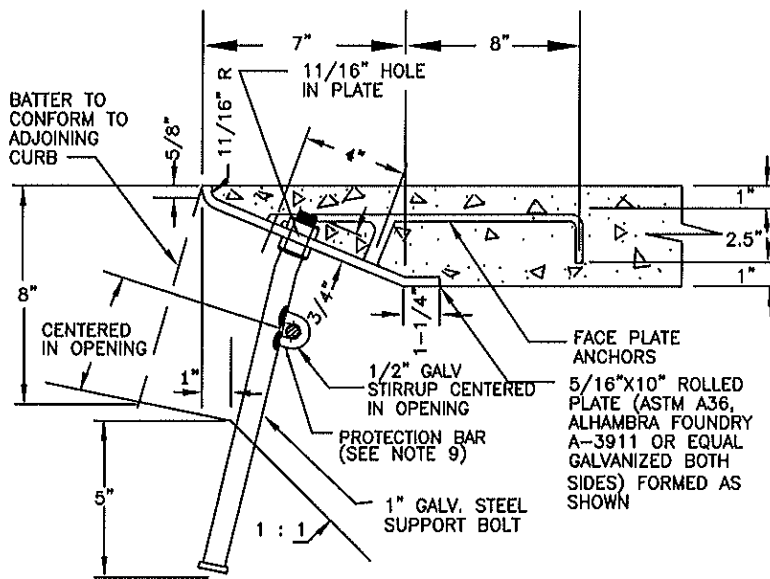
CATCH BASIN DETAILS FOR STREETS
WITH TYPE "A-2" CURB AND GUTTER

302-1

APPROVED BY:  MARK LEWIS R.C.E. 49335
CITY ENGINEER

DATE: 06/03/03

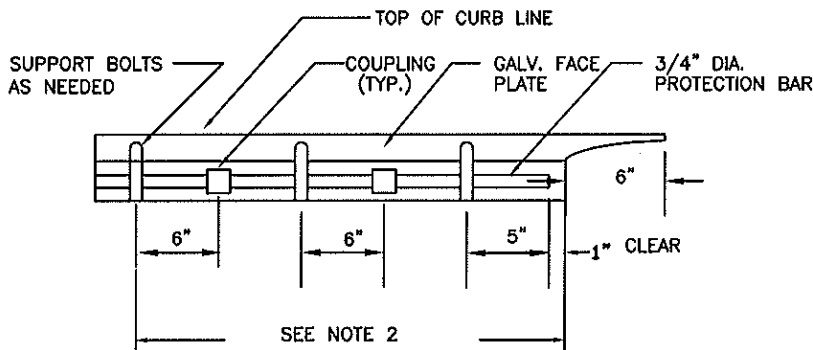
SHEET: 1 OF 2



**BOLT AND ANCHOR
DETAIL FOR FACE PLATE**


NOTES:

- ONE SUPPORT BOLT SHALL BE PLACED 12 INCHES FROM EACH END OF FACE PLATE.
- SUPPORT BOLTS SHALL BE SYMMETRICALLY SPACED IN THE CURB OPENING SO THAT THE UNSUPPORTED SPAN IS NOT MORE THAN 4 FEET.
- ONE COUPLING SHALL BE PLACED 6 INCHES TO THE RIGHT OR LEFT OF EACH SUPPORT BOLT WITH THE EXCEPTION OF THE LAST SUPPORT BOLT. COUPLINGS SHALL BE THREADED TO FACILITATE REMOVAL OF PROTECTION BAR.
- SUPPORT BOLTS SHALL BE INSTALLED IN ALL CATCH BASINS AND SPACED AS SHOWN IN THE PROTECTION BAR DETAIL.
- FACE PLATE ANCHORS SHALL BE UNIFORMLY SPACED NOT TO EXCEED 4 FEET- 0 INCHES O.C. AND SHALL BE PLACED 4 1/2 INCHES FROM EACH END OF THE FACE PLATE.
- A COUPLING MAY BE OMITTED PROVIDED THE PROTECTION BAR IS REMOVABLE AFTER INSTALLATION.
- ALL METAL SHALL BE GALVANIZED AFTER FABRICATION.
- SUPPORT BOLTS AND ANCHORS MAY BE ATTACHED BY A FULL PENETRATION BUTT WELD AS AN ALTERNATE SOLUTION.
- PLACE 3/4 INCH DIAMETER PROTECTION BAR (ALHAMBRA FOUNDRY A-1564 OR EQUAL) HORIZONTALLY ACROSS THE ENTIRE LENGTH OF THE CURB OPENING. ONE PROTECTION BAR REQUIRED FOR 9 INCHES OR LESS OPENING AND TWO BARS FOR OPENINGS IN EXCESS OF 9 INCHES.
- HEIGHT OF OPENING WILL VARY AS SHOWN ON STANDARD PLAN NO. 303.
- THE WORDS "NO DUMPING, DRAINS TO OCEAN" SHALL BE STENCILED ON TOP OF THE CATCH BASIN INLET WITH 2 INCH LETTERS USING BLACK EPOXY PAINT. ANY VARIATIONS MUST BE APPROVED BY THE CITY ENGINEER.



PROTECTION BAR DETAIL

LENGTH OF CURB OPENING	# OF ANCHORS
3'-6"	2
7'-0"	3
10'-0"	4
14'-0"	5
21'-0"	7

REVISIONS	CITY OF FOUNTAIN VALLEY		STANDARD PLAN NO. 302-2
	CATCH BASIN DETAILS FOR STREETS WITH TYPE "D" CURB AND GUTTER		
	APPROVED BY:  MARK LEWIS R. C.E. CITY ENGINEER	49335	DATE: 06/03/03
	SHEET: 2 OF 2		