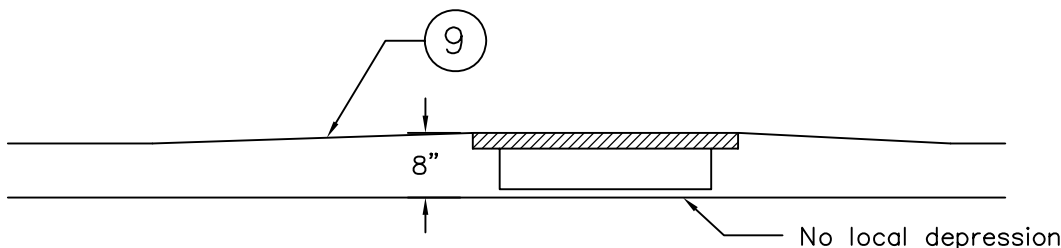
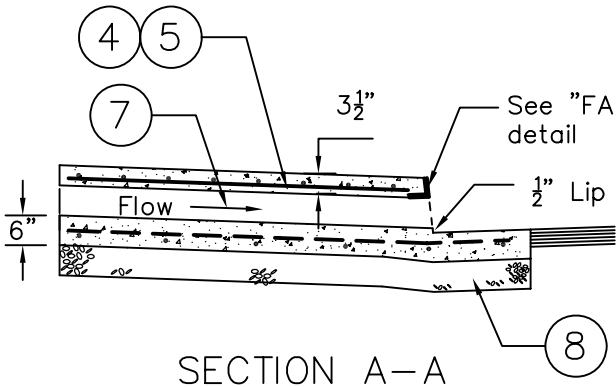


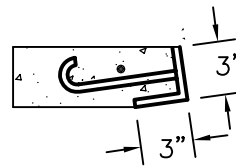
PLAN VIEW



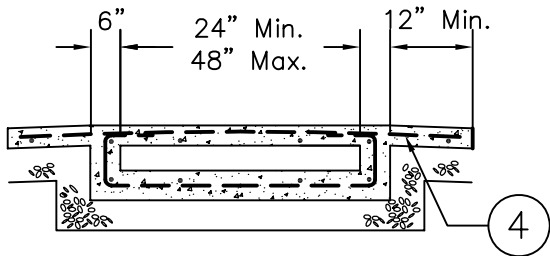
ELEVATION



SECTION A-A



FACE PLATE DETAIL



SECTION B-B

NOTES:

1. Inlet shall be paved swale, rectangular conduit, or pipes. Maximum inlet diam./height shall be 4 inches unless reduced with manifold or junction box. A junction box shall have access/cleanout. Inlet type shall have approval of the City Engineer.
2. $\frac{1}{2}$ " radius at end of channel, each side of inlet.
3. Underdrain shall not be closer than five (5) feet upstream from driveway or curb return.
4. No. 4 reinforcing steel @ 9" o.c., both ways. All other reinforcing steel shall be No. 4 @ 18" o.c., both ways.
5. Concrete shall be Class 520-C-2500 ($5\frac{1}{2}$ sack min., $\frac{3}{4}$ " aggregate).
6. Face Plate shall be 3" x 3" x $\frac{1}{4}$ " galvanized steel with welded-on hook anchors @ 12" o.c.
7. Channel slope shall be no less than 2% and shall be parallel with sidewalk surface.
8. Compacted Class II aggregate base, 6" Min. depth (Min. R value = 75, SE = 55)
9. 4' transition to 8" height for 6" curb height.

CITY OF ARROYO GRANDE - ENGINEERING DEPARTMENT

STANDARD PLAN

ISSUE DATE:

PARKWAY DRAIN

151-AG

OCT 14, 2003

Don Spagnolo, P.E.
Director of Public Works/City Engineer
L.C.E. No. 42993

Sheet 1 of 1