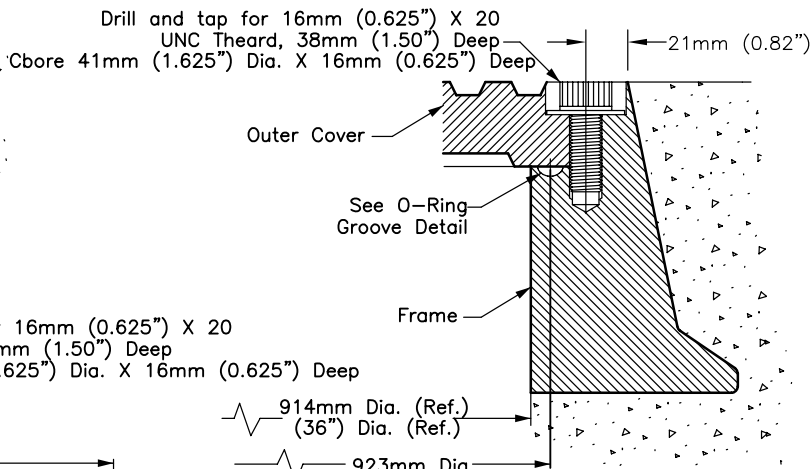
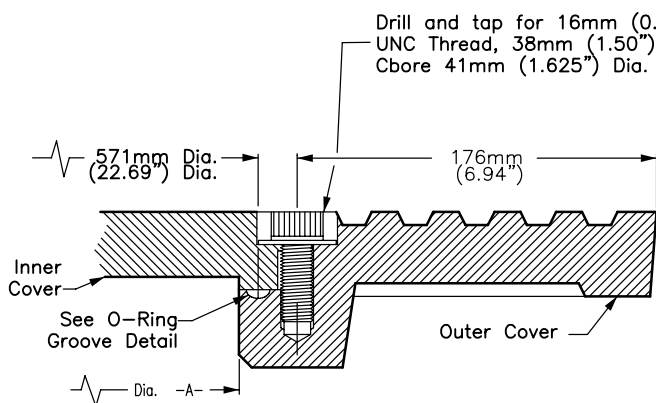


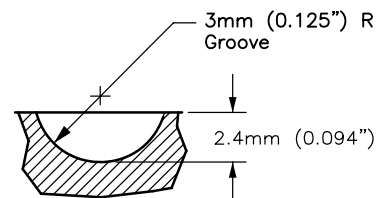
M-1 Detail:  
COVER TO FRAME



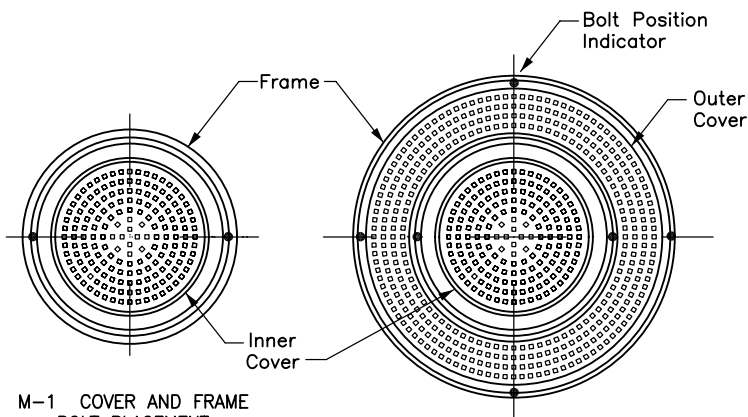
M-3B Detail:  
OUTER COVER TO FRAME



M-3A Detail:  
INNER COVER TO OUTER COVER



NEOPRENE O-RING  
GROOVE DETAIL



M-1 COVER AND FRAME  
BOLT PLACEMENT  
(See Note 3)

M-3 CONCENTRIC COVERS AND FRAME  
BOLT PLACEMENT  
(See Note 3)

NOTES:

- 16mm (0.625") X 20 UNC THREAD, 316 STAINLESS STEEL SOCKET HEAD CAP SCREW AND 38mm (1.50") O.D. X 17mm (0.687") I.D. X 0.078 THICK 316 STAINLESS STEEL WASHER.
- 6mm (0.25") NEOPRENE O-RING GASKET SHALL BE GLUED INTO MACHINED GROOVE. GLUE SHALL MEET THE REQUIREMENTS OF MIL-M-81288 (AMEND. 1)
- BOLTDOWN PATTERNS:
  - M-1 DETAIL (610mm (24") COVER & FRAME): INSTALL TWO (2) BOLTS AT 180 DEGREES.
  - M-3A DETAIL (CONCENTRIC COVERS): BETWEEN INNER AND OUTER COVERS INSTALL TWO (2) BOLTS AT 180 DEGREES.
  - M-3B DETAIL (OUTER COVER & FRAME): BETWEEN OUTER COVER & FRAME INSTALL FOUR (4) BOLTS AT 90 DEGREES.

Revision	By	Approved	Date
ORIGINAL		Parkinson	2/95
Add Metric		T. Stanton	03/03
Reviewed		T. Stanton	04/06

SAN DIEGO REGIONAL STANDARD DRAWING

MANHOLE COVER - LOCKING DEVICE

RECOMMENDED BY THE SAN DIEGO REGIONAL STANDARDS COMMITTEE

*T. Stanton* 3/01/2003

Chairperson R.C.E. 19246 Date

DRAWING  
NUMBER

M-4