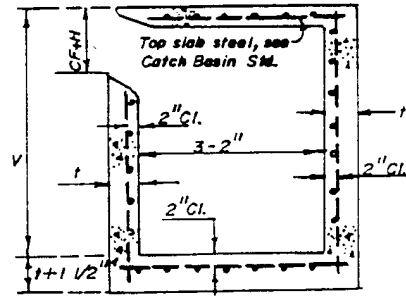


REINFORCEMENT - "W" to 14' (incl):

W of CB	V (Ft)		t (In)	FRONT WALL STEEL		REAR & END WALLS & FLOOR STEEL
	From	To (incl)		Hor.	Vert	Each Way
to 7'		4	6	#3 @ 6"	#3 @ 6"	#3 @ 6"
to 7'	4	8	8	#4 @ 12"	#4 @ 12"	#4 @ 12"
to 7'	8	12	10	#4 @ 10"	#4 @ 10"	#4 @ 10"
14'		4	6	#3 @ 6"	#3 @ 6"	#3 @ 6"
14'	4	8	8	#4 @ 12"	#4 @ 12"	#4 @ 12"
14'	8	10	10	#4 @ 8"	#4 @ 12"	#4 @ 10"
14'	10	12	10	#4 @ 6"	#4 @ 12"	#4 @ 10"



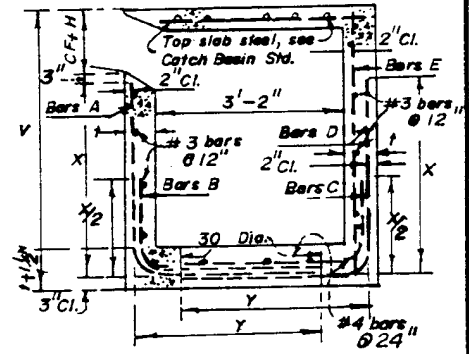
SECTION 1

WALL AND FLOOR STEEL

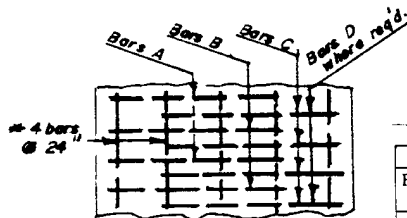
REINFORCEMENT - "W" GREATER THAN 14'

V (Ft)		t (In)	FRONT WALL STEEL	REAR WALL STEEL			END WALL STEEL
From	To (Incl)		Bars A & B	Bars C	Bars D	Bars E	Hor. & Vert.
	4	6	#3 @ 24"	#3 @ 12"		#4 @ 24"	#3 @ 18"
4	5	8	#3 @ 20"	#3 @ 12"		#4 @ 24"	#3 @ 14"
5	8	8	#3 @ 12"	#3 @ 10-1/2"		#4 @ 24"	#3 @ 14"
6	7	8	#4 @ 17"	#3 @ 8-1/2"		#4 @ 24"	#3 @ 14"
7	8	8	#4 @ 13"	#3 @ 6-1/2"		#4 @ 24"	#3 @ 14"
8	9	10	#4 @ 15"	#3 @ 7-1/2"		#4 @ 20"	#3 @ 11"
9	10	10	#4 @ 12"	#4 @ 12"		#4 @ 20"	#3 @ 11"
10	11	10	#5 @ 15"		#4 @ 11"	#4 @ 18"	#3 @ 11"
11	12	10	#6 @ 18"		#4 @ 9"	#4 @ 13"	#3 @ 11"

$X = (V+t) - (C.F. + H + 4 \frac{1}{2} ")$ $Y = (\frac{b+2t}{2}) + 15 \text{ dia.} - 2"$



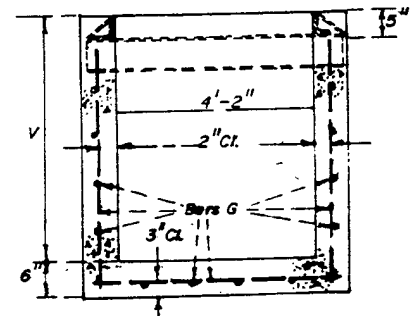
SECTION 2



REINFORCEMENT FLOORING SECTION 2

REINFORCEMENT - GRATING

V (Ft)		t (In)	SIDE & END WALL STEEL
From	To (Incl)		BARS G
	4	6	#3 @ 6"
4	8	8	#4 @ 6"
8	12	10	#5 @ 6"



NOTES:

1. Wall and floor reinforcing shown shall be used with catch basin standard drawings.
2. When excavation or soils conditions require both sides of the walls to be formed, the reinforcing steel shown shall be used regardless of basin length or depth.

Revised	Drawn	Date DEC. 88	CITY OF CORONA PUBLIC WORKS DEPARTMENT
	Approved	Date 1-3-89	
	<i>Joseph R. Palencia</i> Director of Public Works		CATCH BASIN REINFORCEMENT
			(ALL TYPES)
			STD. PLAN 206-0