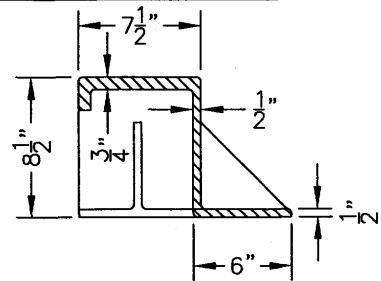
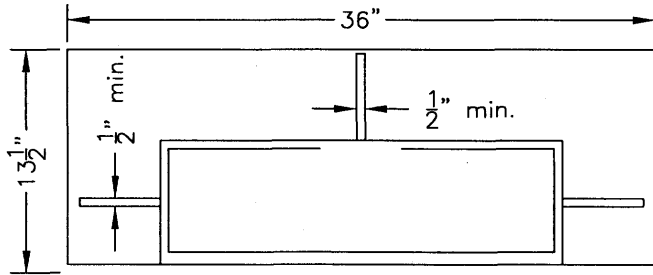


FRONT VIEW



SECTION A-A



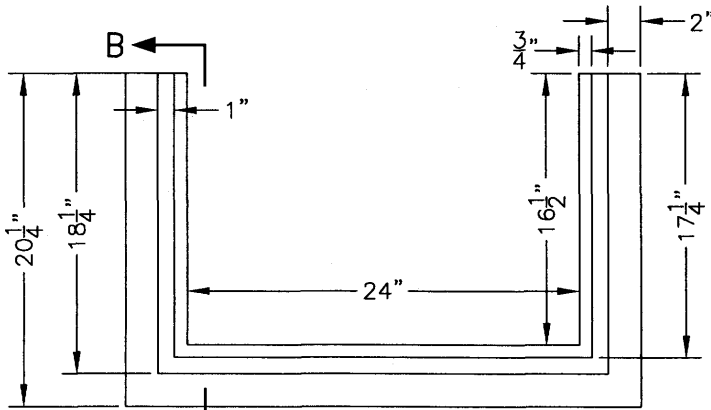
PLAN VIEW
HOOD

NOTES

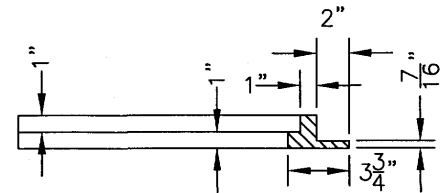
Castings shall be Phoenix Iron Works P-6001, South Bay Foundry Model SBF 1901 or approved equal cast iron frame, grate and hood.

Casting shall be given a hot asphalt dip.

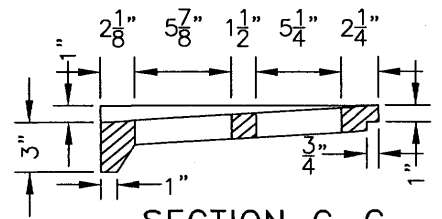
Gap between grate and frame shall be no greater than 1/4" upon final installation. Size of gap shall be approved by the City inspector.



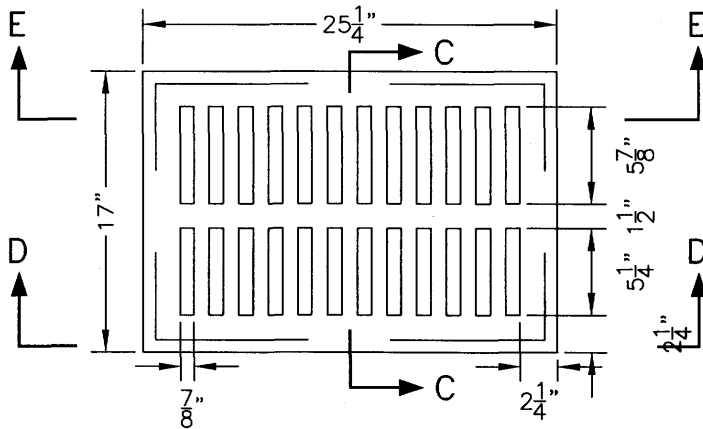
PLAN OF FRAME



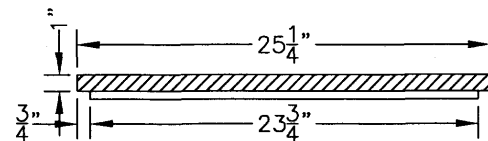
SECTION B-B



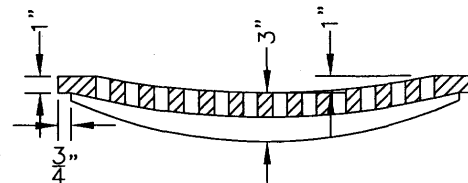
SECTION C-C



PLAN OF GRATE
FRAME & GRATE



SECTION D-D



SECTION E-E

Rev	By	Date
0	DWH	12/14/92
1	MAR	01/02/02
2	JT	07/31/06
Scale: NTS		

**Standard Hood,
Frame & Grate**

City of Palo Alto Standard

Approved by:
[Signature]
PE No. 35411
Date 5/14/07
Dwg No. 303