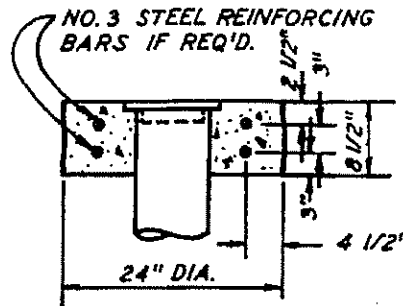
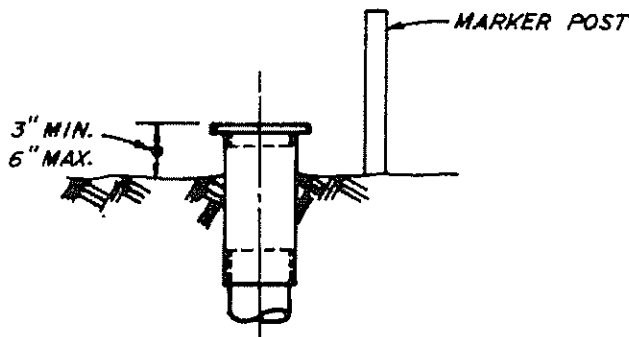


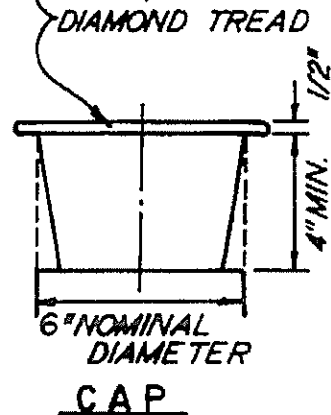
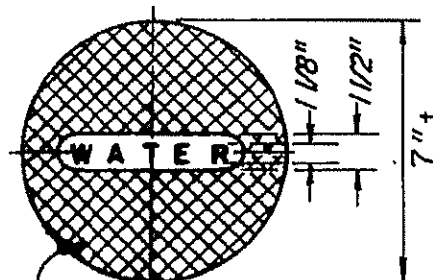
**TYPICAL INSTALLATION
STREET OR ALLEY**



DETAIL "A"



**TYPICAL INSTALLATION
UNTRAVELED AREAS**



NOTE:-
WHERE VALVE OPERATING NUT IS GREATER THAN 36" BELOW THE SURFACE AN EXTENSION ROD FOR VALVE OPERATION WITH CIRCULAR CENTERING GUIDE, TO WITHIN 12" OF THE SURFACE WILL BE REQ'D. IN UNPAVED TRAVELED AREAS CAP SHALL BE 8" TO 10" BELOW GRADE.

CITY OF ADELANTO