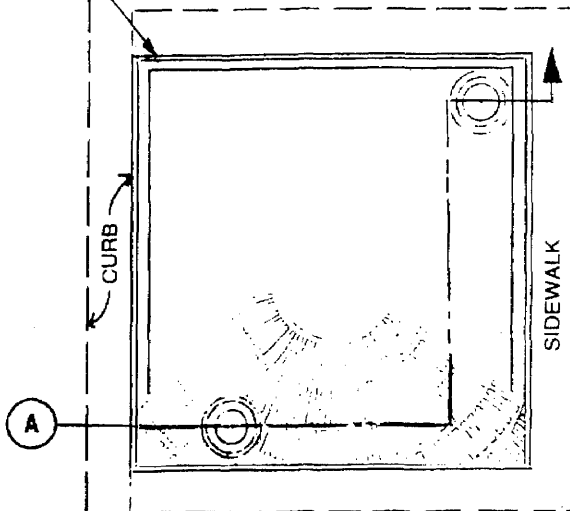
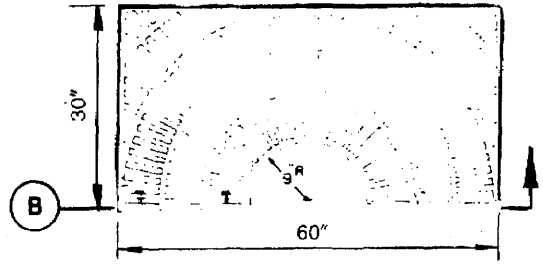


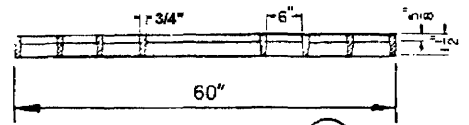
SEE FRAME DETAIL ON SHEET NO. 6



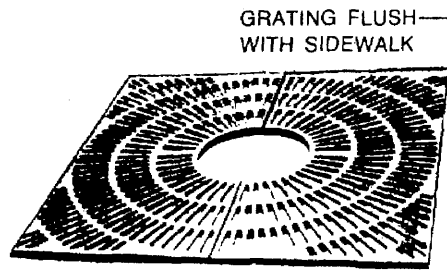
PLAN



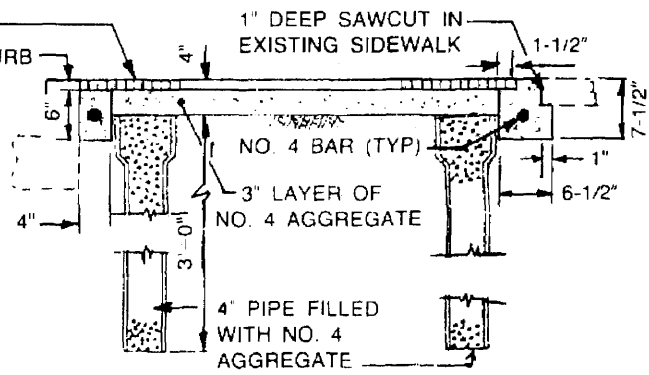
GRATE PLAN



SECTION B



ISOMETRIC VIEW



SECTION A


NOTES:

1. GRATE MATERIAL TO BE CAST IRON.
2. GRATE PATTERN AS SPECIFIED ON PROJECT PLANS AND/OR IN SPECIFICATIONS.
3. EXISTING SIDEWALK SHALL BE CAREFULLY SAWCUT PREPARATORY TO LAYING OF FRAME. SAWCUT OVER-RUNS SHALL BE CLEANED AND FILLED WITH EPOXY APPROVED BY THE ENGINEER AND FINISHED TO SIDEWALK GRADE.
4. THE PIPE MAY BE CIP, ACP, VCP, ABS, PVC, GALV. STL. OR ASPHALT IMPREGNATED FIBER DUCT, AND IT MAY BE BELL OR PLAIN END.
5. AFTER ALL OTHER WORK PERTINENT TO PLANTING HAS BEEN COMPLETED, EACH TREE SHALL BE WATERED IMMEDIATELY WITH A MINIMUM OF 20 GALLON OF WATER AND REPEATED 2 TIMES IN THE NEXT 3 DAYS. AFTER THE WATER HAS SETTLED AND THE SOIL IS SUFFICIENTLY DRY, THE SOIL SHALL BE GRADED AND TAMPED AND 3-INCH LAYER OF CONCRETE AGGREGATE SHALL BE PLACED AND GRADED.

TYPE 4

A.P.W.A. STD. NO. 519-1

REVISIONS:

APPROVED 08/21/01	 <p style="font-size: 2em; font-family: cursive;">City of La Quinta</p>	STANDARD
CHRIS A. VOGT CITY ENGINEER RCE 44250		705
TREE WELL		SHEET 5 OF 6