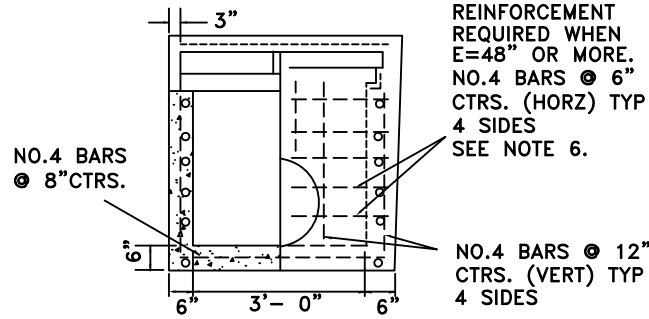


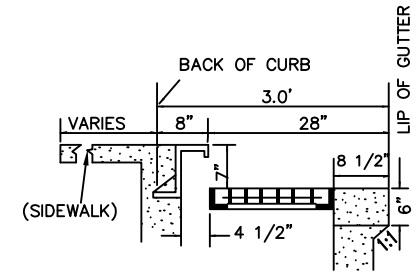
PLAN



SECTION A-A

REINFORCEMENT
REQUIRED WHEN
E=48" OR MORE.
NO.4 BARS @ 6"
CENTERS. (HORIZ) TYP
4 SIDES
SEE NOTE 6.

NO.4 BARS @ 12"
CENTERS. (VERT) TYP
4 SIDES

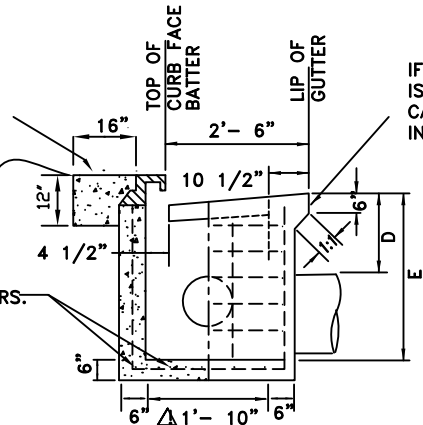


FOR TYPE 1 ROLLED CURB

FISH STAMP
SEE DETAIL DR-17

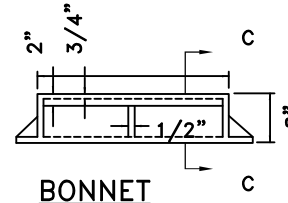
12" EACH SIDE OF
DRAIN INLET, IF NOT
ADJOINING SIDEWALK.

NO.4 BARS @ 8" CENTERS.

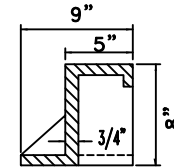


SECTION B-B

IF LARGER BOX
IS DESIRED FILLET
CAN BE MOVED TO
INSIDE OF BOX



BONNET



SECTION C-C

FRAME, HOOD AND GRATE (OR APPROVED EQUAL APPLIES)

D&L SUPPLY: #1-3542 (FRAME), #1-3543 (GRATE), #1-3541 (HOOD)
SOUTH BAY FOUNDRY: #1904 (FRAME, GRATE, HOOD)

ROB JENSEN
DIRECTOR OF PUBLIC WORKS/CITY ENGINEER

NOTES:

1. DIMENSIONS D & E MAY VARY WITH EACH LOCATION.
2. SEE STD. CONST. DWG. #CST DR-2 FOR INLET GRATE.
3. THE INSIDE SURFACE OF FRONT AND BACK WALLS OF THE CATCH BASIN SHALL NOT DEVIATE MORE THAN TWO INCHES IN ALIGNMENT FROM INSIDE SURFACE OF THE WALLS OF THE TOP INLET PORTION.
4. SLOPE FLOOR 2 INCHES TO OUTLET.
5. CONCRETE SHALL BE CLASS A, SIX SACK.
6. 6X6, 4 GAUGE WELDED WIRE FABRIC MAY BE USED IN LIEU OF #4 REBAR.
7. ALL REINFORCEMENT BAR SHALL BE GRADE 60.



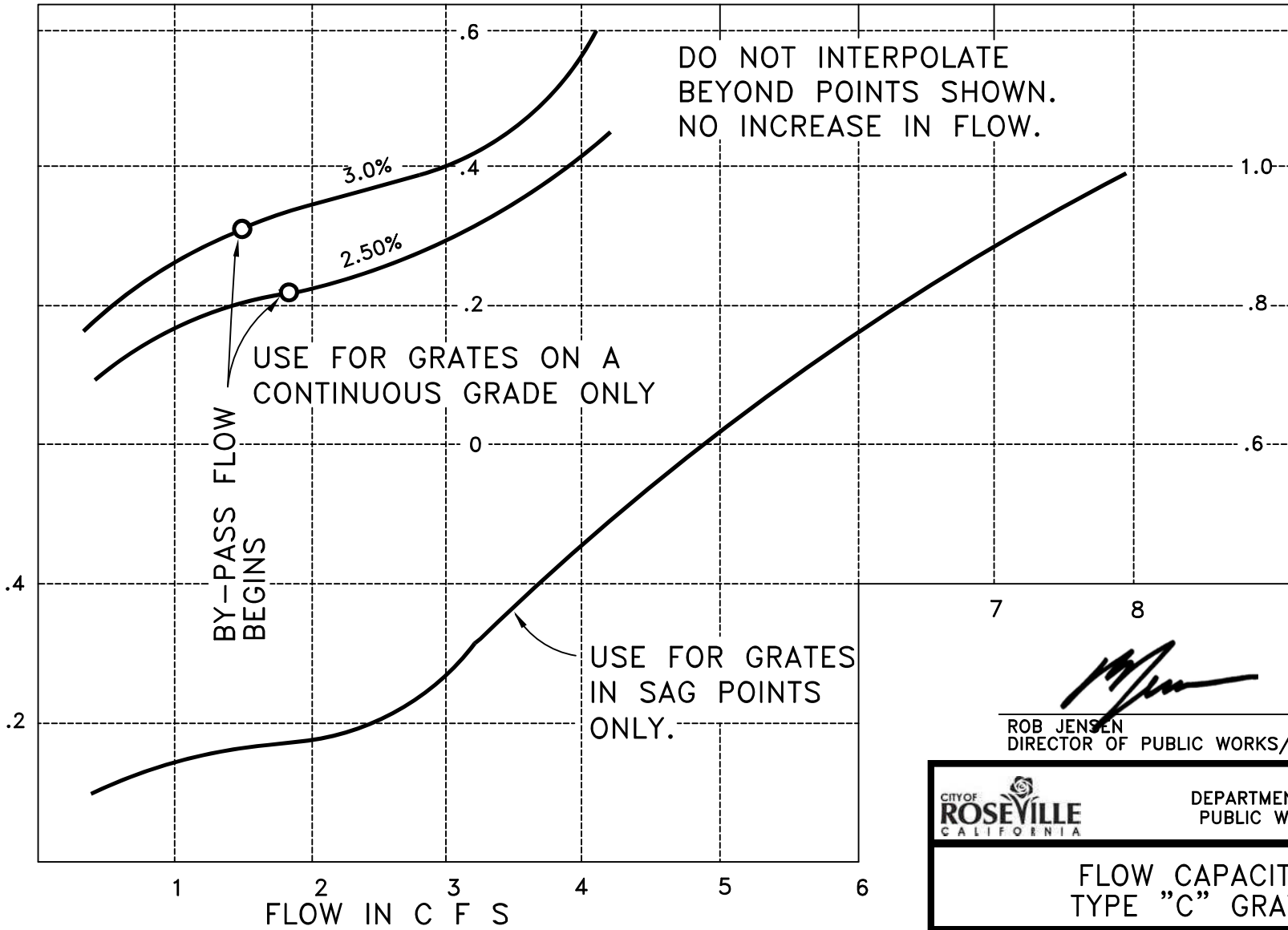
DEPARTMENT OF
PUBLIC WORKS


DROP INLET TYPE "C"

SCALE: NONE
REVISED: MARCH 2007
DRAWN BY: R FOWLER
APPROVED BY: R JENSEN

DR-1

DEPTH IN FEET AT GUTTER FLOWLINE (SUMP)




ROB JENSEN
DIRECTOR OF PUBLIC WORKS/CITY ENGINEER

CITY OF
ROSEVILLE
CALIFORNIA

DEPARTMENT OF
PUBLIC WORKS

FLOW CAPACITY
TYPE "C" GRATE

SCALE: NONE
REVISED: MARCH 2007
DRAWN BY: R FOWLER
APPROVED BY: R JENSEN

DR-2