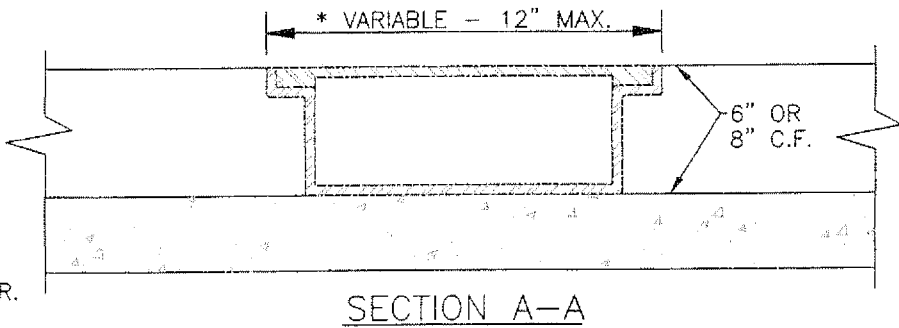
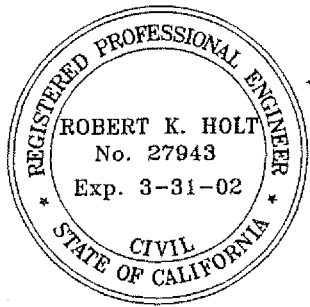
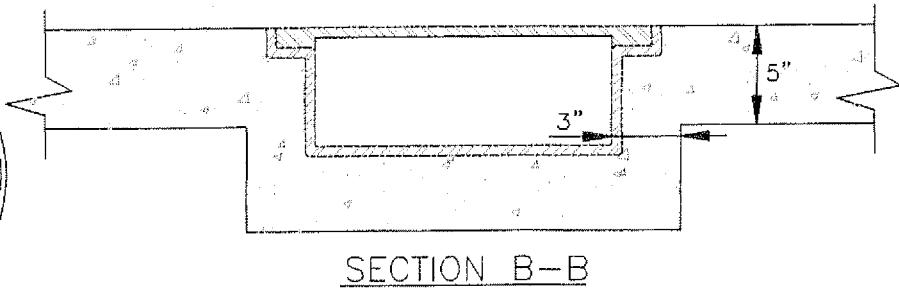


REMOVE AND REPLACE EXISTING CONCRETE WITH 5" OF CLASS 3 CONCRETE WHICH SHALL ATTAIN A 28-DAY COMPRESSIVE STRENGTH OF 4000 PSI IN ACCORDANCE WITH ASTM C39/C39M-99 AND SHALL CONTAIN 1-1/2 LBS. POLYPROPYLENE FIBER PER CUBIC YARD. POLYPROPYLENE FIBER BY FIBERMESH CO., FORTA MONO, O.A.E. PLACE EXPANSION JOINTS BETWEEN EXISTING AND NEW CONCRETE. ANGLE SHALL BE DETERMINED BY THE INSPECTOR.



* MODIFICATION FOR WIDTH GREATER THAN 12" CAN BE MADE WITH THE APPROVAL OF THE CITY ENGINEER.



APPROVED: PUBLIC WORKS DIRECTOR
James W. Rodkey, Jr. DATE *9/7/00*
 JAMES W. RODKEY, JR.
 APPROVED: CITY ENGINEER
Robert K. Holt DATE *8/31/00*
 ROBERT K. HOLT, P.E.

CITY OF
BLYTHE

SIDEWALK
 DRAIN