

STIFFENER BAR  
 3" x 3/8"  
 (76 x 10 mm) WELDED  
 ON BOTTOM OF RACK  
 WHEN  $L_R$  IS 72"  
 (1.8 m) OR MORE

HEADWALL  
 AND WINGWALL

OUTLET  
 CONDUIT

BOLTS PER NOTE 5

CASE A

72"  
 (1.8 m) MAX  
 1/4"  
 (6 mm) TYP  
 1"  
 (25 mm) ±  
 3'  
 (920 mm) ±  
 REMOVAL  
 PORTION  
 150 mm  
 (6") TYP  
 30"  
 (760 mm) OC, TYP

RACK PLAN

CASE B

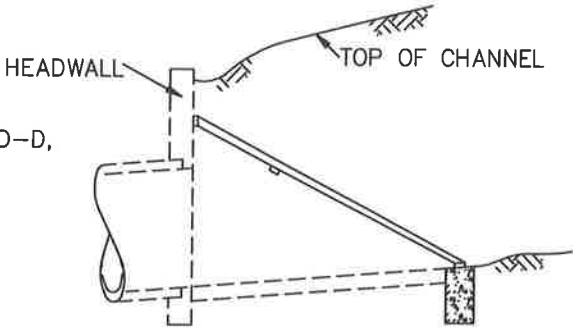
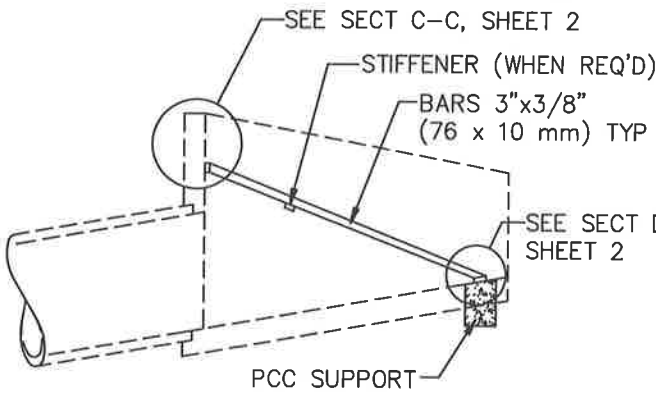
SEE CASE A  
 FOR  
 DIMENSIONS

OUTLET  
 CONDUIT

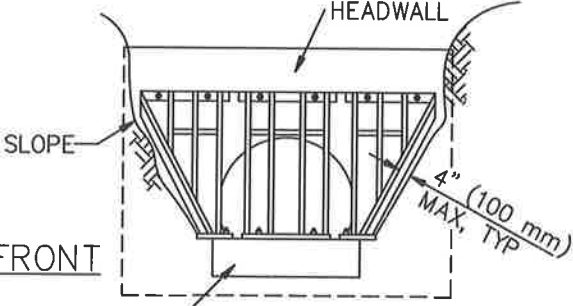
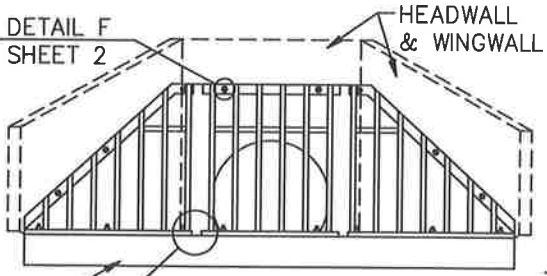
REMOVAL  
 PORTION

DETAIL E,  
 SHEET 2

EX OR PROP  
 SLOPE



RACK SECTION



RACK FRONT

PCC SUPPORT  
 DETAIL E  
 SHEET 2

STANDARD PLANS FOR PUBLIC WORKS CONSTRUCTION

PROMULGATED BY THE  
 PUBLIC WORKS STANDARDS INC.  
 GREENBOOK COMMITTEE  
 1993  
 REV. 2005, 2009

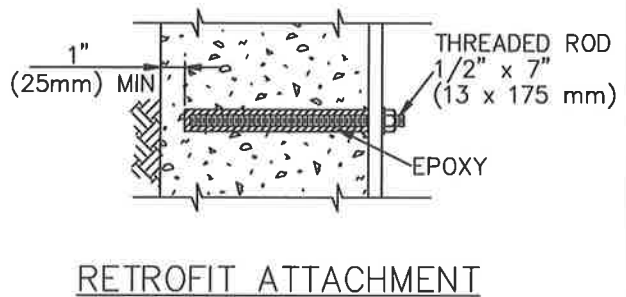
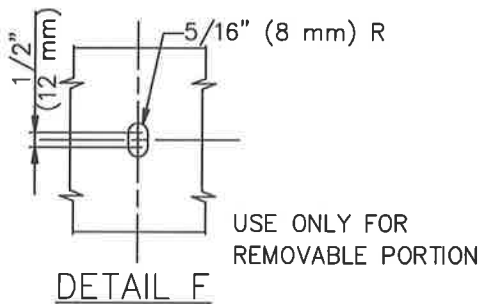
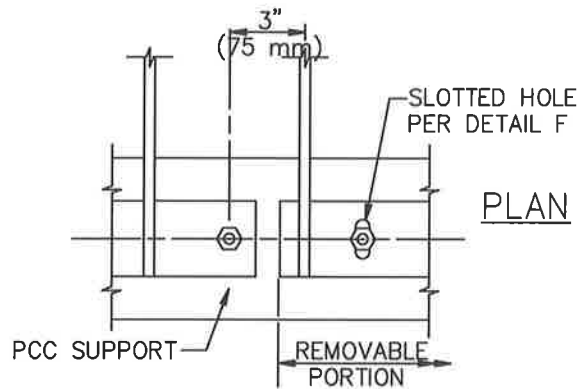
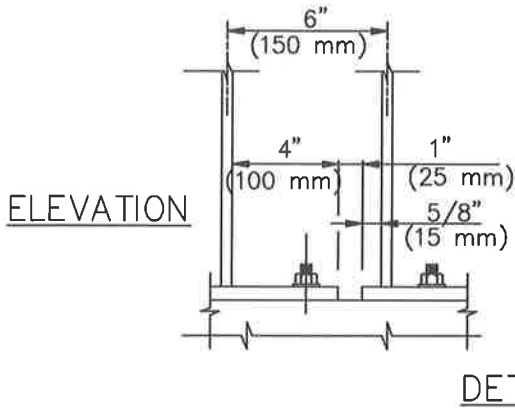
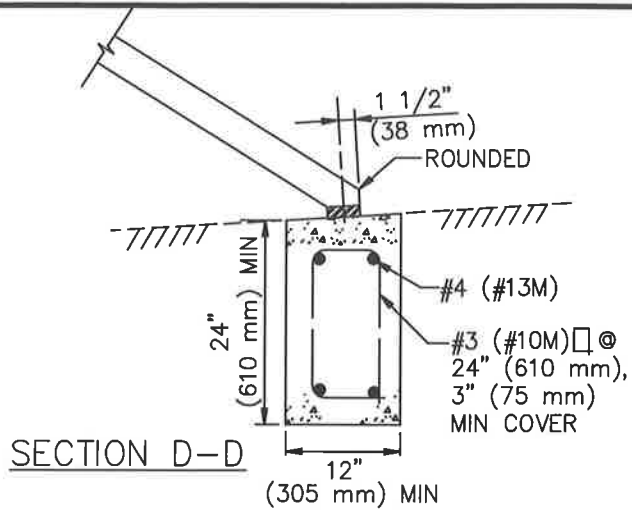
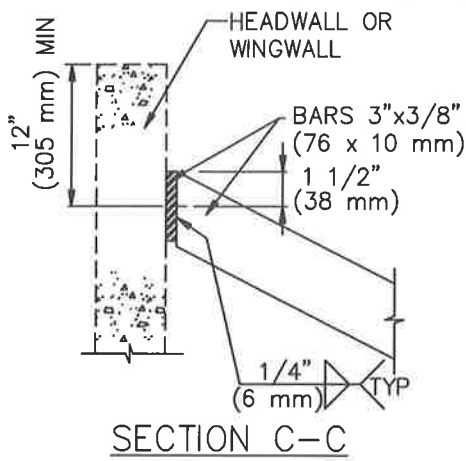
TRASH RACK (INCLINED)

USE WITH STANDARD SPECIFICATIONS FOR PUBLIC WORKS CONSTRUCTION

STANDARD PLAN

361-2

SHEET 1 OF 2



NOTES

1. MAXIMUM SIZE OF OUTLET FOR THIS RACK IS 48" (1200 mm) PIPE OR 48" (1.2 m) WIDE RCB. MAXIMUM LENGTH OF RACK  $L_R$  IS 10'-0" (3 m).
2. ADJUST  $L_R$  SO THAT THE SLOPE OF THE RACK IS APPROXIMATELY 2 HORIZONTAL TO 1 VERTICAL.
3. THE PCC SUPPORT IS NOT NEEDED IF THE INLET STRUCTURE HAS A SUITABLE CUTOFF WALL. THE PCC SUPPORT SHALL NOT REPLACE THE CUTOFF WALL.
4. GALVANIZE RACK AFTER FABRICATION.
5. BOLTS SHALL BE 1/2"x7" (13 x 175 mm). BOLTS FOR REMOVABLE PORTION SHALL BE STAINLESS STEEL. PROVIDE WASHERS AT EACH BOLT.
6. SUBMIT SHOP DRAWINGS PER SSPWC 2-5.3.3. FOR RETROFIT WORK, INCLUDE DETAILS FOR ATTACHMENT TO EXISTING STRUCTURE.

STANDARD PLANS FOR PUBLIC WORKS CONSTRUCTION

STANDARD PLAN

TRASH RACK (INCLINED)

361-2

SHEET 2 OF 2