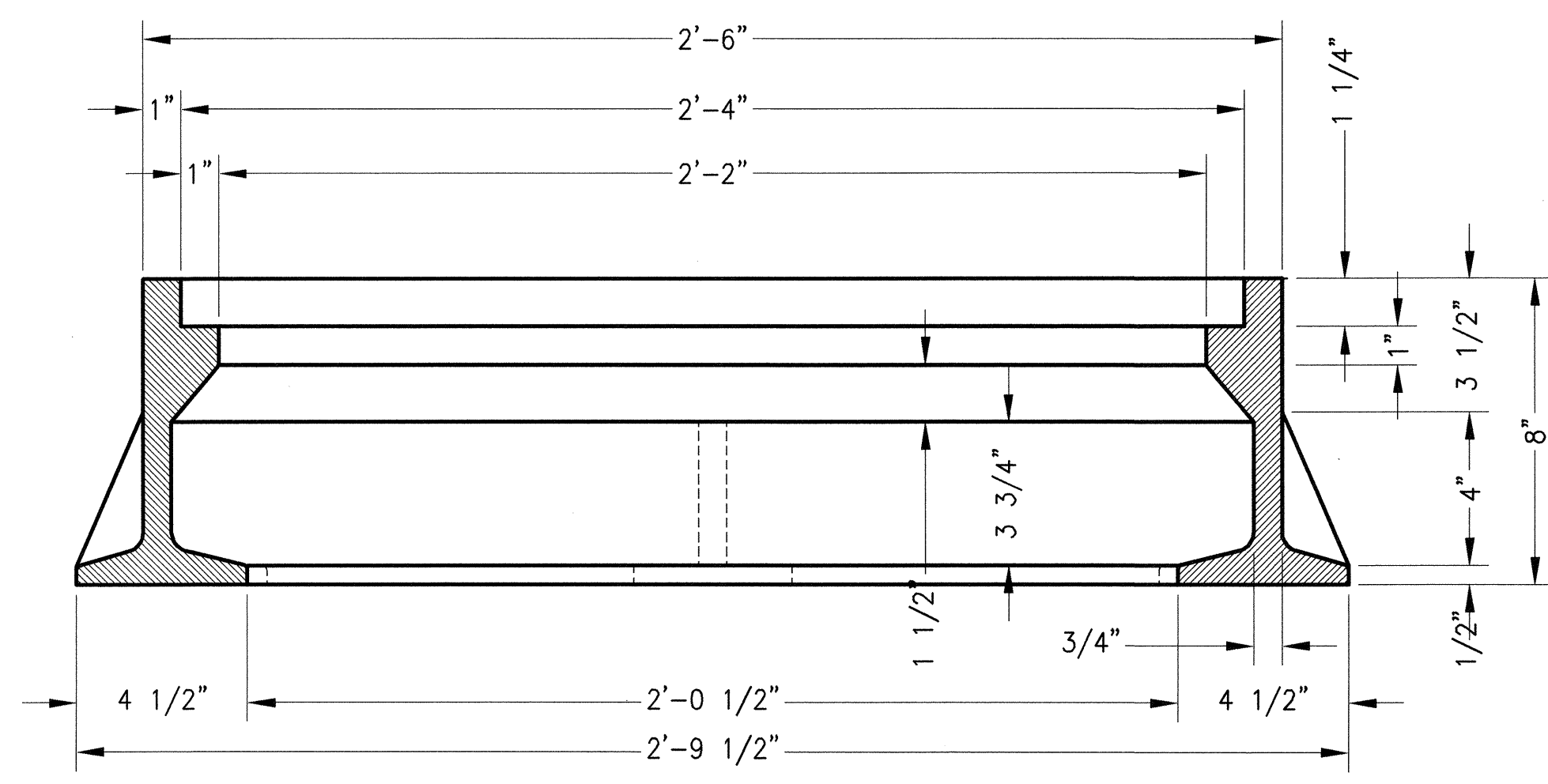
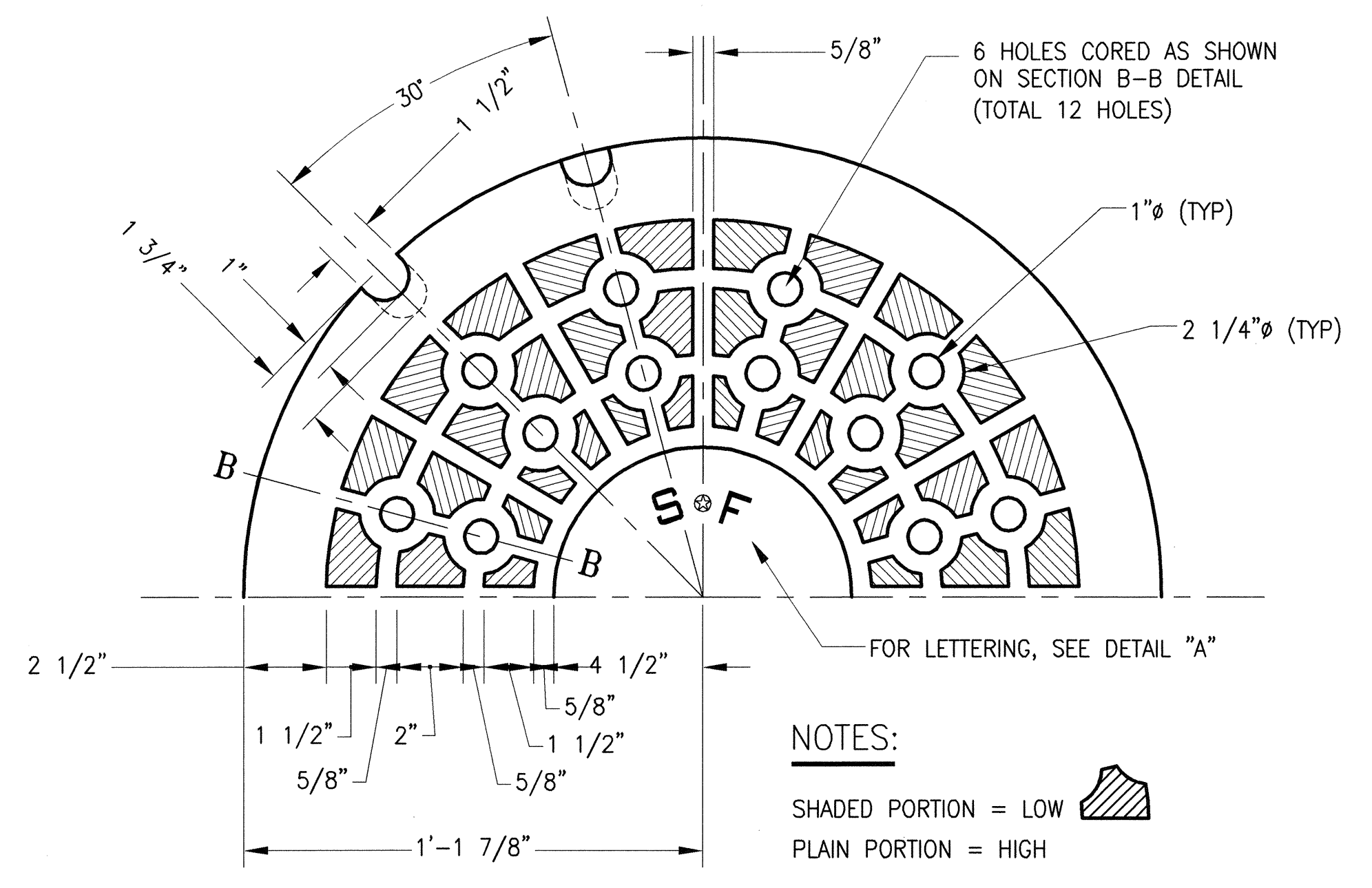


PLAN VIEW OF MANHOLE FRAME
SCALE: 1"=4"

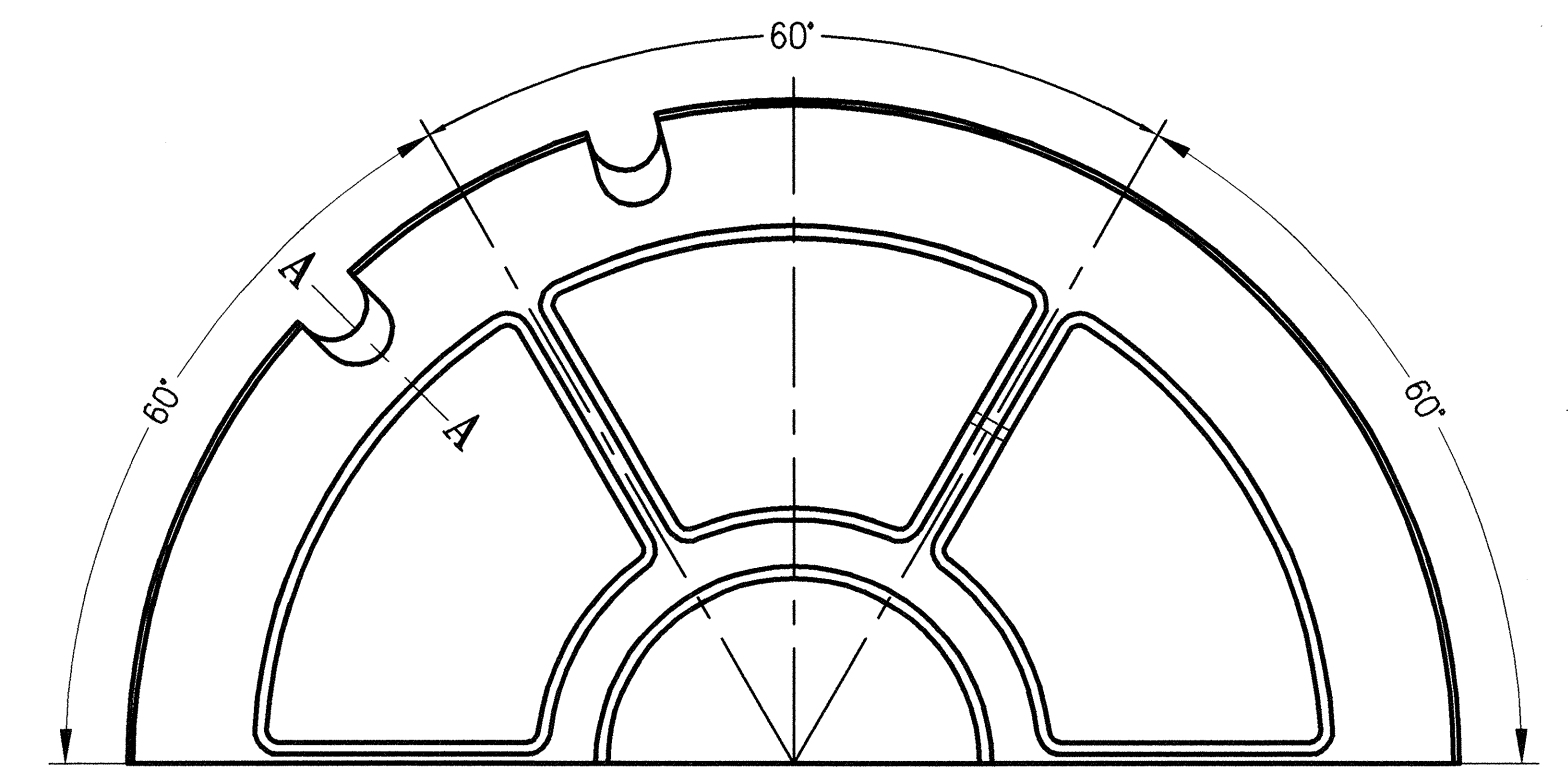


SECTION OF MANHOLE FRAME
SCALE: 1"=4" APPROX. WEIGHT 258 LBS.

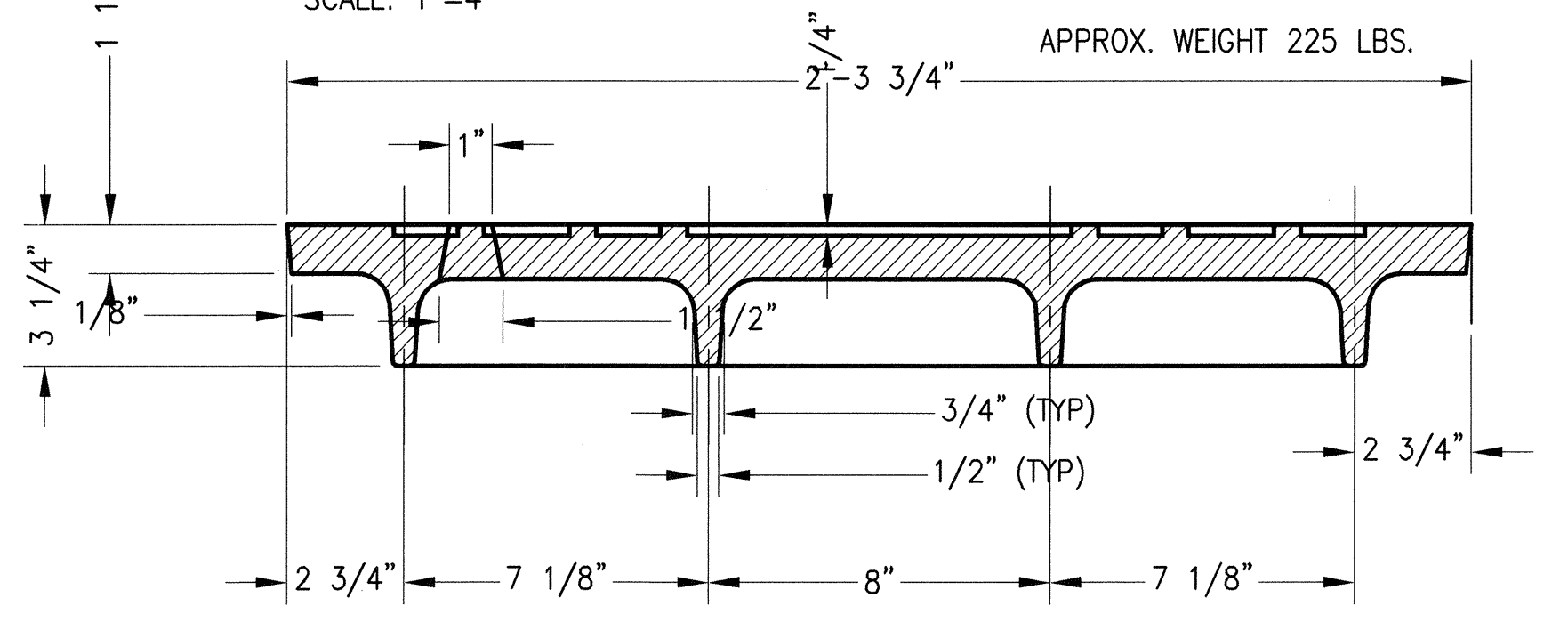
NOTE : MATERIAL FOR MANHOLE FRAME AND COVER TO BE "GRAY IRON"
IN ACCORDANCE WITH CURRENT A.S.T.M. - SPEC. A-48



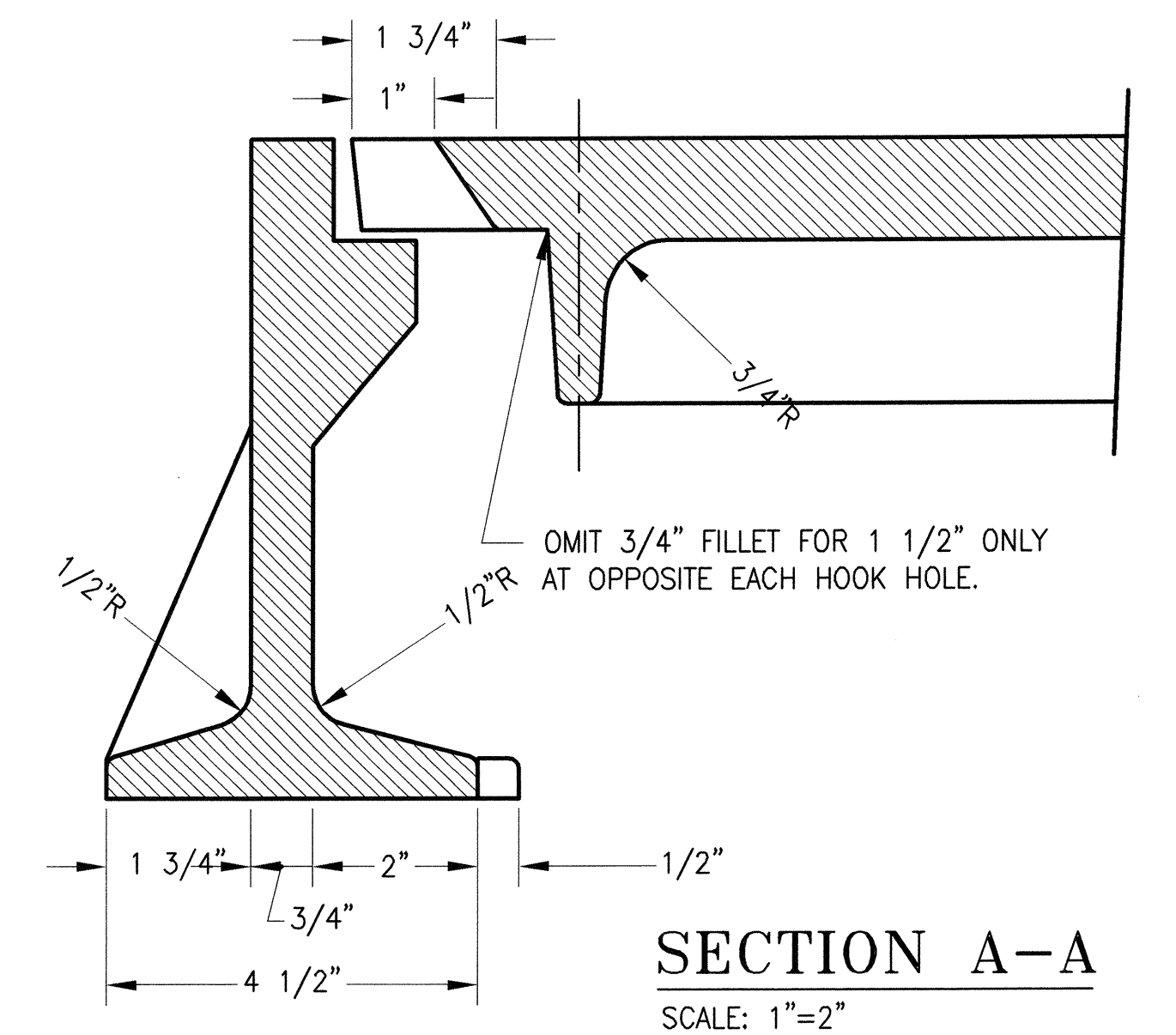
HALF PLAN OF COVER
SCALE: 1"=4"



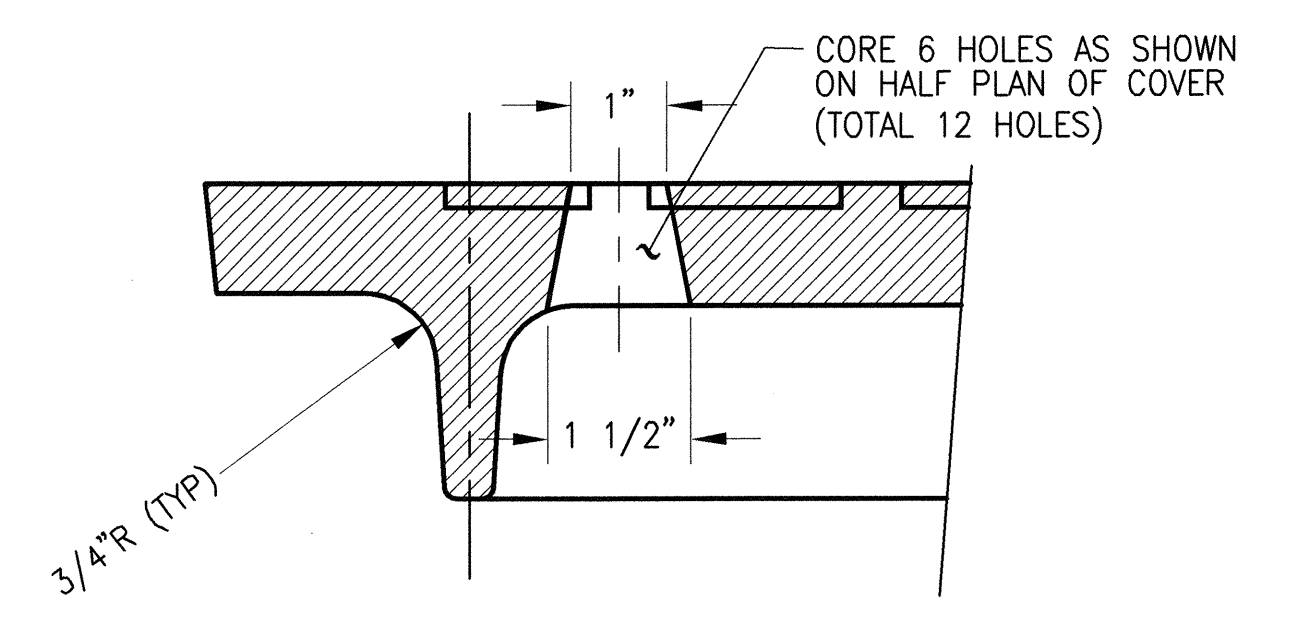
HALF PLAN-UNDERSIDE OF COVER
SCALE: 1"=4"



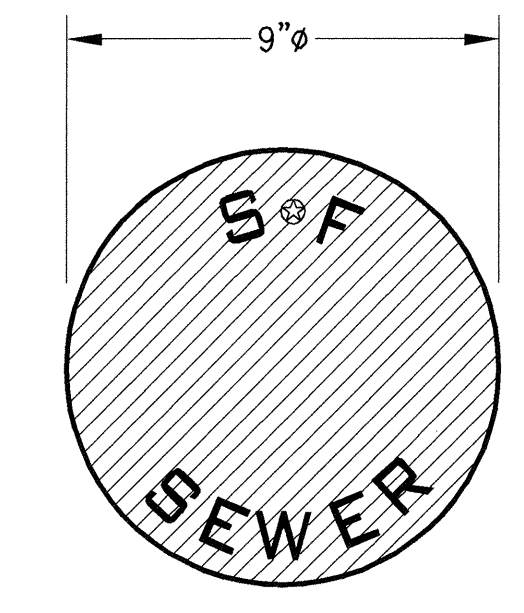
SECTION OF COVER
SCALE: 1"=4"



SECTION A-A
SCALE: 1"=2"



SECTION B-B
SCALE: 1"=2"



DETAIL "A"
SCALE: 1"=2"

This Standard Plan was developed for use on public works projects in the City and County of San Francisco, and shall not be used without consulting a Registered Professional Engineer. The Department of Public Works reserves the right to make revisions to this Standard Plan at any time.

NO.	DATE	DESCRIPTION	BY	APP.
TABLE OF REVISIONS				
CHECK WITH TRACING TO SEE IF YOU HAVE LATEST REVISION				

REFERENCE INFORMATION
& FILE NO. OF SURVEYS



BUREAU OF ENGINEERING
DEPARTMENT OF PUBLIC WORKS
CITY AND COUNTY OF SAN FRANCISCO

REVIEWED:	DATE:	PLANS APPROVAL DATE:	APRIL 30, 2007
ID	12/2006	<i>[Signature]</i>	4/30/07
DRAWN:	DATE:		
JL	07/2003	<i>[Signature]</i>	4/30/07
CHECKED:	DATE:		
KS	12/2006	<i>[Signature]</i>	

STANDARD PLAN		OLD FILE NO.	
HYDRAULICS			A-10,634
STANDARD 26" MANHOLE FRAME & COVER		FILE NO.	87,190
		REV. NO.	

Xrefs: V:\0966J Standard Plans & Specs Update\2_Plans\Title_Block\BOE STD Title Block.dwg
 Dimension Scale: 4
 Model Units: Feet
 Drawing Path: V:\0966J Standard Plans & Specs Update\2_Plans\FINAL\HYD\SP-87190.dwg, Login: coronios
 Plot Time: Fri, 27 Apr 2007 6:42pm
 Measurement Units are English