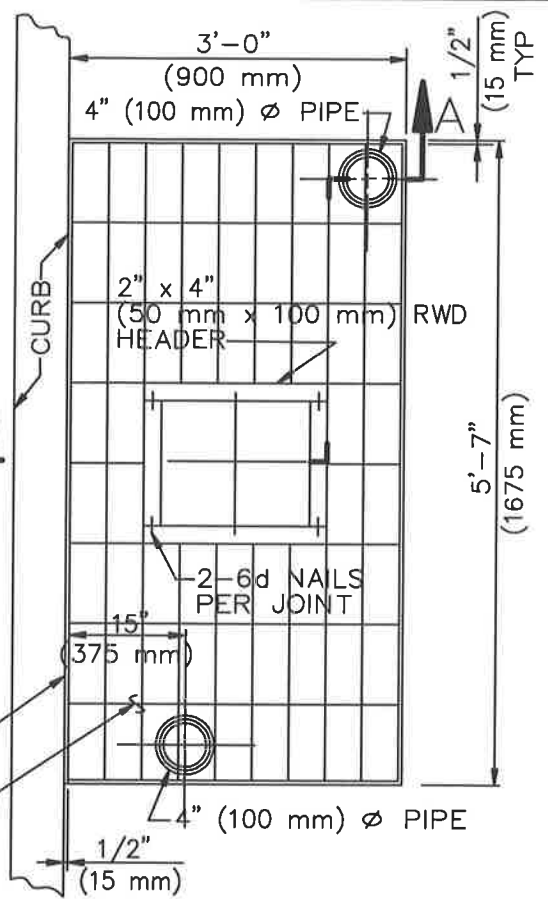


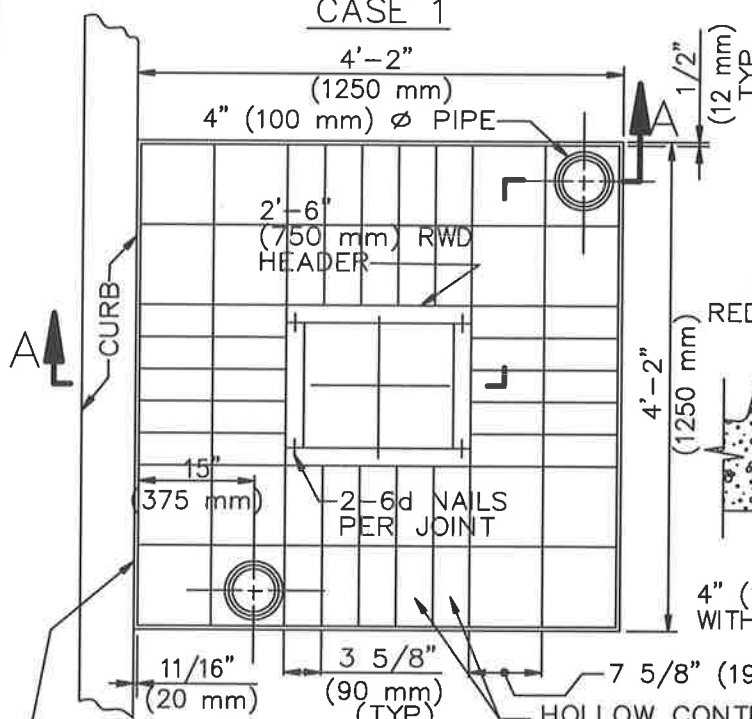
MANHOLE BRICK  
 2 1/2" x 7/8" x 8 1/4"  
 (64 mm x 96 mm x 209 mm)  
 LAID TIGHT WITHOUT MORTAR

CASE 1



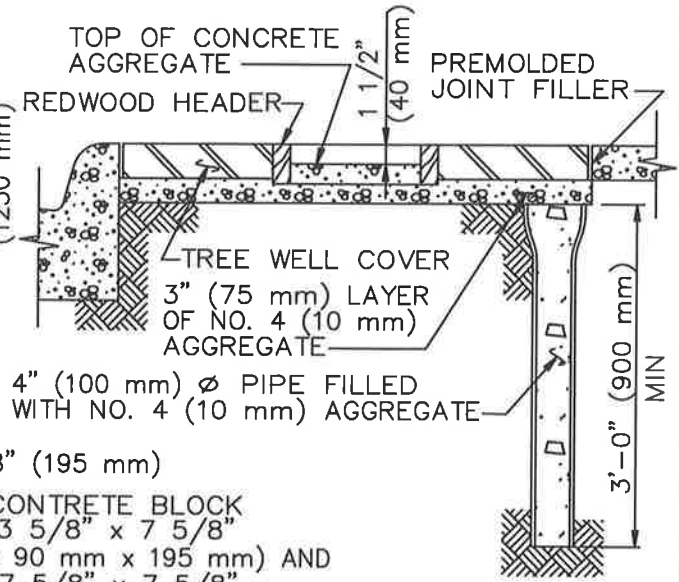
MANHOLE BRICK  
 2 1/2" x 7/8" x 8 1/4"  
 (64 mm x 96 mm x 209 mm)  
 LAID TIGHT WITHOUT MORTAR

CASE 2



6" (150 mm) DEEP PREMOLDED  
 JOINT FILLER. THICKNESS AS  
 REQUIRED FOR TIGHT FIT.  
 (4 SIDES)

CASE 3



HOLLOW CONCRETE BLOCK  
 5 5/8" x 3 5/8" x 7 5/8"  
 (140 mm x 90 mm x 195 mm) AND  
 3 5/8" x 7 5/8" x 7 5/8"  
 (90 mm x 195 mm x 195 mm)  
 LAID TIGHT WITHOUT MORTAR

SECTION A-A

NOTE:

SEE SHEETS 3 AND 7 FOR NOTES  
 PERTAINING TO THIS SHEET.

TYPE 2