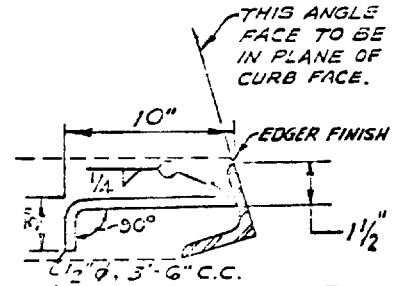


LENGTH OF CURB OPENING	NO. OF ANCHORS
3'-6" OR LESS	2
7'-0"	3
10'-0"	4
14'-0"	5
21'-0"	7

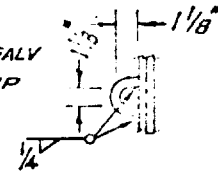
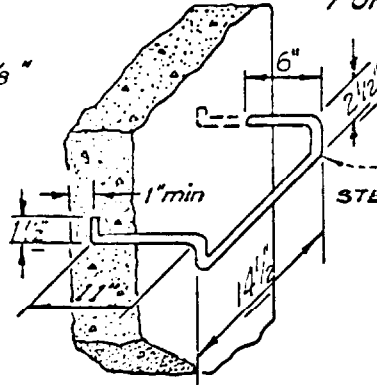
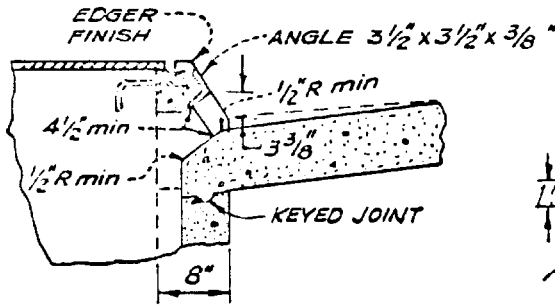


WITH STD 202 CURB

**FACE ANGLE ANCHOR
DETAIL**

For Highways, use Std. 521

For Highways, use Std. 521



WITH STD 201 CURB

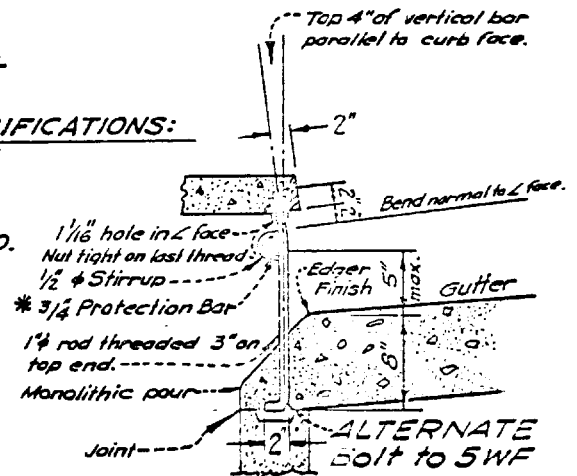
STIRRUP DETAIL

CURB OPENING DETAILS

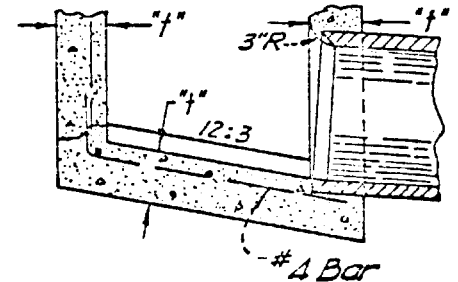
STEP DETAIL

UNLESS OTHERWISE SPECIFIED ON PLANS & SPECIFICATIONS:

- "H" depth for all boxes is 3'-6".
- For "f" wall thickness, see Table on Inlet Plan.
- Height of curb opening will vary with the type of curb and the depth of the local depression. See Local Depression STD 510.
- Reinforcing steel shall be #4 bars @ 18" centers placed 1 1/2" clear to inside surface of box.
- Steps - None required where "H" is 3'-6" or less. Install one step 16" above floor when "H" is more than 3'-6" and less than 5'-0". When "H" is more than 5'-0", see STD 406. Place steps in a wall that has no pipe openings.
- When curb openings are 6" or more high, place a 3/4" protection bar horizontally across the entire length of the opening and bend back into the wall 4" on each side.
- Curb openings longer than 7' shall have one curb support for each 7' increment or fraction thereof, evenly spaced.
- Pipe inlets and outlets may be placed in any wall.
- Curb section shall match adjacent curb.
- Except for inlets used as junction boxes, basin floors shall have a minimum slope of 12:3 from all directions to invert of outlet pipe and shall have a smooth trowel finish.
- Alternate reinforced floor at option of contractor.
- All exposed metal shall be galvanized after fabrication.
- See STD 511 for frame and grate details.
- See STD 510 for local depression details.
- See STD 206 for sidewalk details.



CURB SUPPORT DETAIL



**ALTERNATE
REINFORCED BOTTOM**

CITY OF BREA

Richard P. Power

CITY ENGINEER

STANDARD

MISCELLANEOUS INLET DETAILS

509

REV: 1-2 JPE DES 99 DATED: 12-1-66
 STATE OF CALIF. THUS --- THUS ---
 ORANGE CO NO. 305 AS DERIVED
 EXC. AS DERIVED