
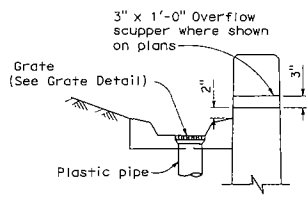
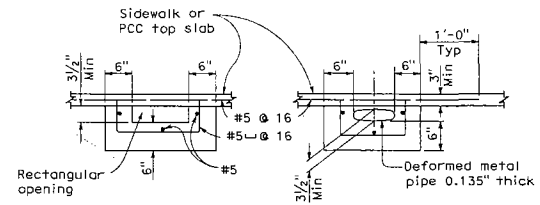


DIST	COUNTY	ROUTE	POST MILES TOTAL PROJECT	SHEET TOTAL NO. SHEETS
				
May 1, 2006 PLANS APPROVAL DATE The State of California or its officers or agents shall not be responsible for the accuracy or completeness of electronic copies of this plan sheet. To go to the Caltrans web site, go to <a href="http://www.dot.ca.gov">http://www.dot.ca.gov</a>				

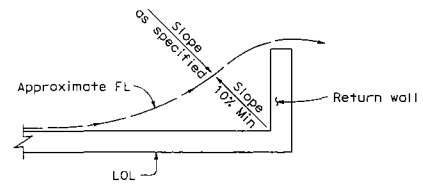


**WALL DRAIN DETAIL**

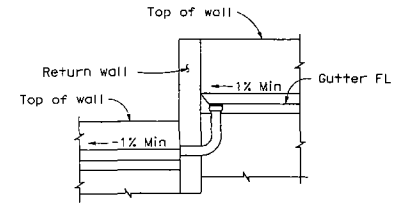


**NOTE:**  
 Area of opening to be not less than that of pipe from wall gutter. Make opening transition in wall. Edge opening in curb face to 3/4" minimum radius.

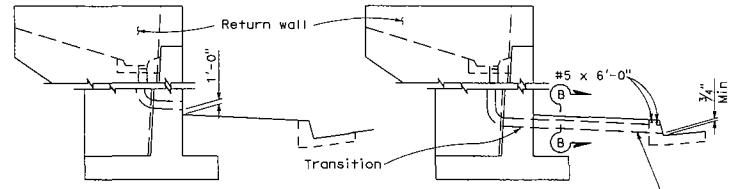
**OUTLET DETAIL - SECTION B-B**



**WALL DRAINAGE WHERE GUTTER NOT REQUIRED**



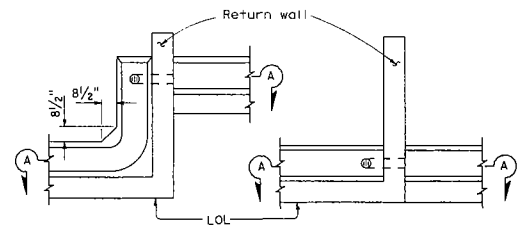
**SECTION A-A**



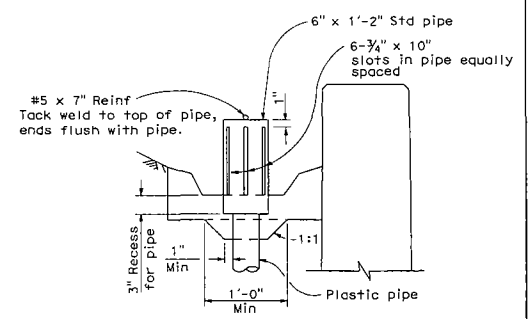
**RETAINING WALL, FACE OF WALL OUTLET**

4" Plastic pipe when wall drain is 4" or less. For larger pipe see Outlet Detail-Section B-B.

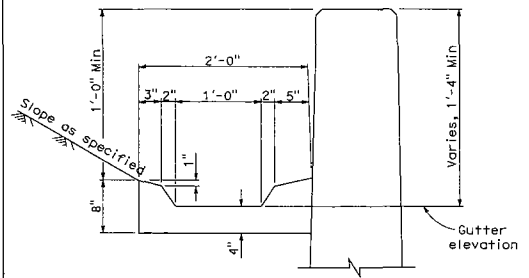
**RETAINING WALL, GUTTER OUTLET**



**PLAN-OFFSET WALL PLAN-CONTINUOUS WALL DRAIN THROUGH RETURN WALL**



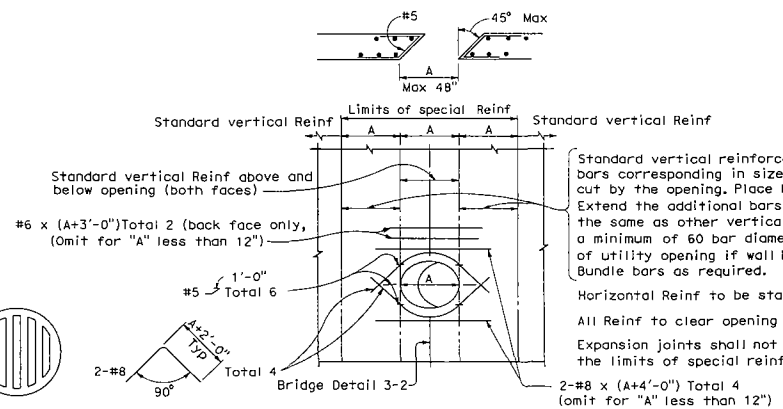
**WALL DRAIN WITH PIPE DOME**



**TYPICAL GUTTER DETAIL**



**GRATE DETAIL**  
 Sizes to fit standard hubs



**RETAINING WALL UTILITY OPENING**

Max size of opening (A) = 48"  
 To be used in conjunction with sheet **B3-B**

Standard vertical reinforcement plus additional vertical bars corresponding in size and number to bars cut by the opening. Place half on each side. Extend the additional bars into the footing the same as other vertical wall reinforcement and to a minimum of 60 bar diameters above the top of utility opening if wall height permits. Bundle bars as required.

Horizontal Reinf to be standard except as shown.

All Reinf to clear opening by 2" minimum.

Expansion joints shall not be located within the limits of special reinforcing.

STATE OF CALIFORNIA  
 DEPARTMENT OF TRANSPORTATION

**RETAINING WALL DETAILS No. 2**

NO SCALE

**B3-9**

254

2006 STANDARD PLAN B3-9