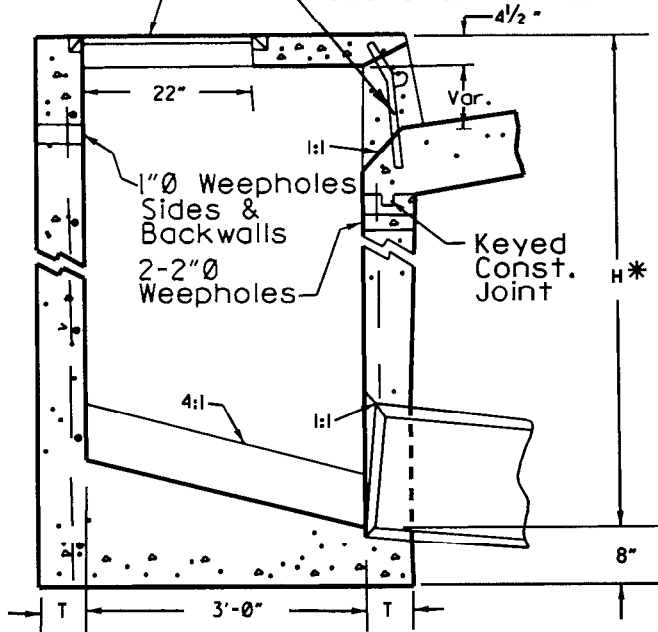


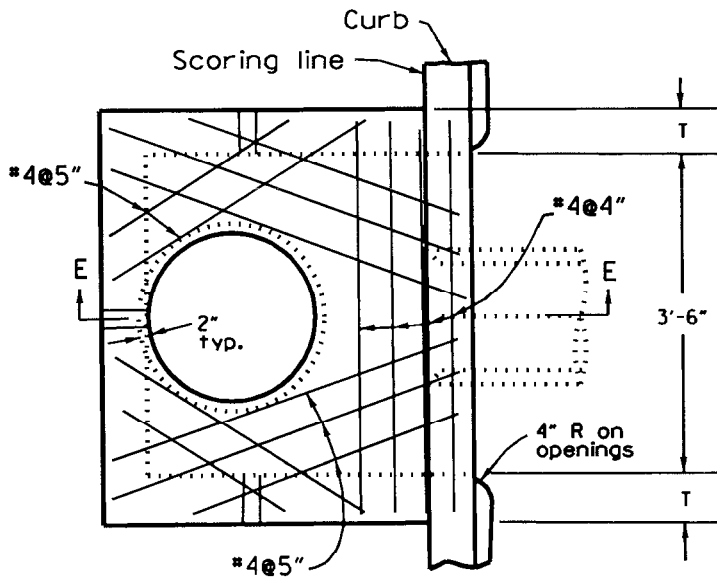
Alhambra Foundry A-1531-B, Apex Steel Corporation X110B or equal with approved locking devices. See Std. Plan 312-2-0C.
See Std. Plan 1306 for Curb Support details.



SECTION E-E

H	T
8'-0" or less	6"
8'-1" to 20'-0"	8"

*When outlet pipe is constructed within roadway a minimum of 30" (Co. Ord. No. 63,032,1961) or the roadway structural section thickness plus 6", whichever is greater, shall be maintained between the top of pipe and the roadway surface.



PLAN

NOTES:

1. Curb opening shall conform to curb alignment.
2. See Std. Plans 1306 and 1307 for details and notes.
3. See Std. Plan 1308 for Local Depression details.
4. Deck including steel reinforcement shall be constructed the same width as sidewalk (up to 6' wide).
5. The following shall be stencilled using 2 inch high letters and black paint on the face of the curb adjacent to the inlet (either side) and on the top of the inlet:

**NO DUMPING
DRAINS TO OCEAN**

ORANGE COUNTY RESOURCES & DEVELOPMENT MANAGEMENT DEPARTMENT

Approved

H. I. Nakasone
H. I. Nakasone, Chief Engineer

Adopted: Res. 77-92

Revised: Res. 82-718; 86-1141; 96-546; 06-010

STD. PLAN

1301

INLET TYPE I

SHT. 1 OF 1