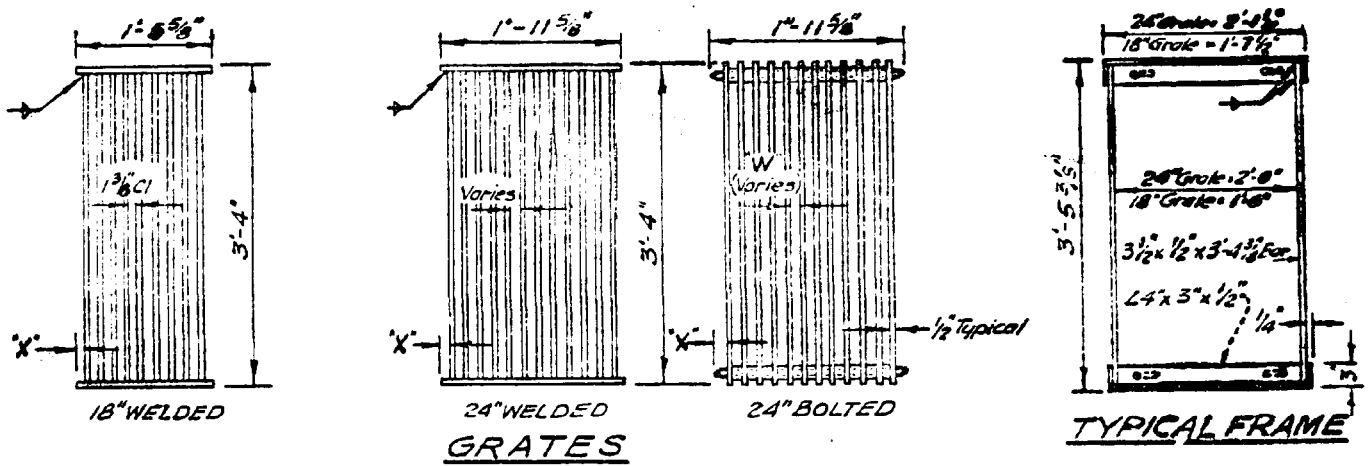


SIMILAR TO EXCEPT AS UNDESLINED
 GRANTEE COUNTY 30
 STATE OF CALIF 7-832.7 THUS---
 SUPERSEDES: 12-1-66
 DATE: 12-1-66
 REV:

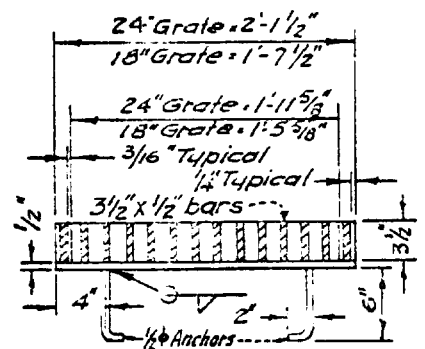


TYPE 18-9
1 3/8\"/>

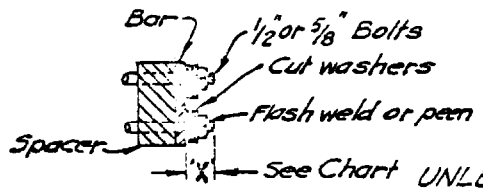
TYPE 24-15
1\"/>

TYPE 24-12
1 3/8\"/>

TYPE 24-9
2\"/>

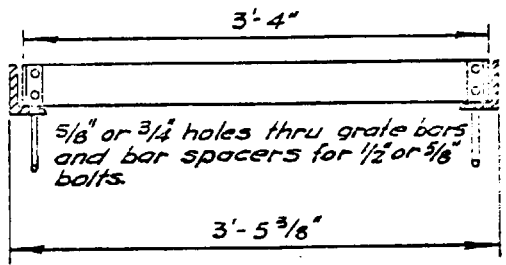


CROSS SECTION
 (THRU FRAME AND WELDED GRATE)

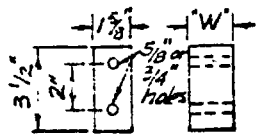


BOLTING DETAIL

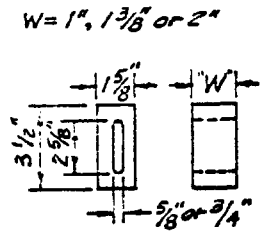
TYPE	No. BARS	"X"	WEIGHT'S	
			WELDED	BOLTED
18-9	9	1 1/8"	194	215
24-9	9	1 3/8"	200	230
24-12	12	1 3/8"	258	286
24-15	15	1 1/8"	316	344
18" FRAME			90	
24" FRAME			90	



LONGITUDINAL SECTION
 THRU FRAME AND BOLTED GRATE



BAR SPACER



ALTERNATE SPACER

UNLESS OTHERWISE SPECIFIED ON PLANS & SPECIFICATIONS:

1. Grate type numbers refer to width of grate in inches and number of bars, respectively.
2. Contractor has the option of using welded or bolted grates.
3. Grates and frames shall be galvanized after fabrication.
4. Rounded top of bars optional on all grates.
5. Pipe drop inlets with a grate shall be placed so that bars parallel the direction of principle surface flow.
6. All parts shall be structural grade steel; except end spacers which maybe of either cast iron or steel.