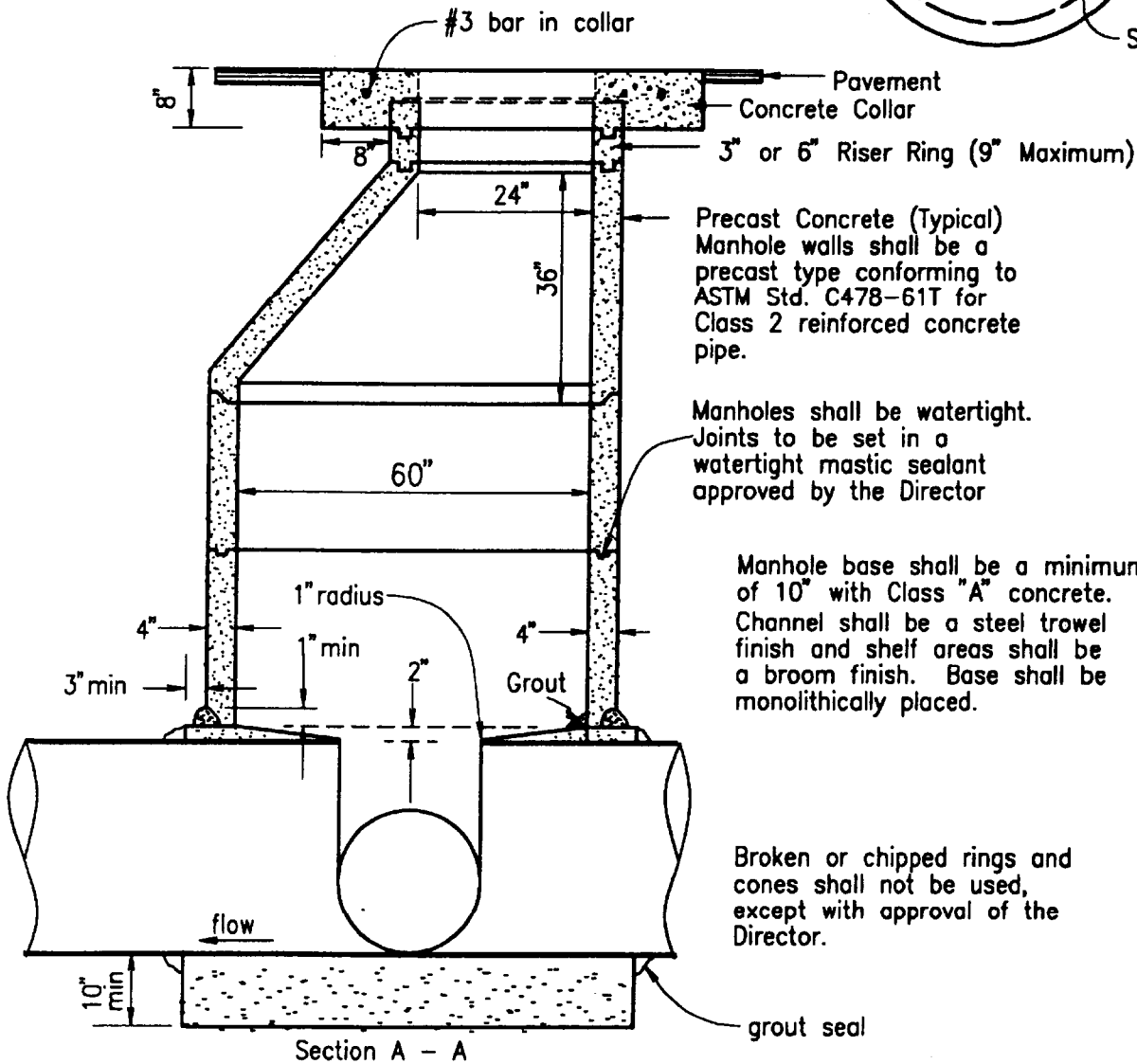
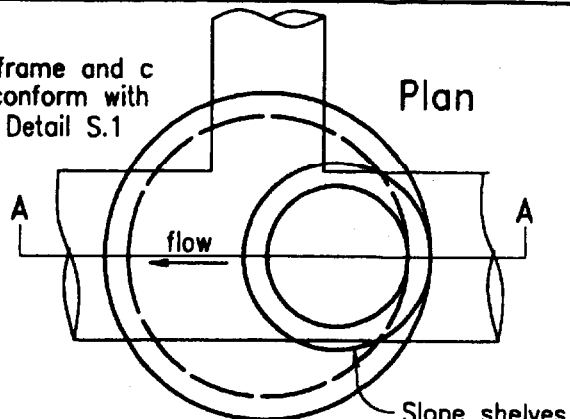


Manhole frame and cover to conform with Standard Detail S.1



Precast Concrete (Typical)
Manhole walls shall be a precast type conforming to ASTM Std. C478-61T for Class 2 reinforced concrete pipe.

Manholes shall be watertight. Joints to be set in a watertight mastic sealant approved by the Director

Manhole base shall be a minimum of 10" with Class "A" concrete. Channel shall be a steel trowel finish and shelf areas shall be a broom finish. Base shall be monolithically placed.

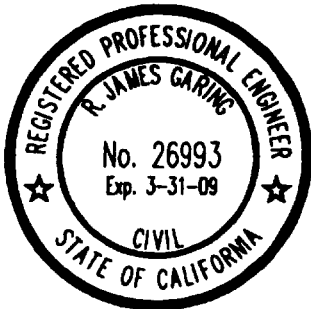
Broken or chipped rings and cones shall not be used, except with approval of the Director.

Section A - A

Approved:

[Signature] 29 JUNE 07
Director of Public Works/
Designer

[Signature] 29 June 07
R. James Garing, RCE 26993
City Engineer



City of Grover Beach

Typical Manhole
60"

D.16