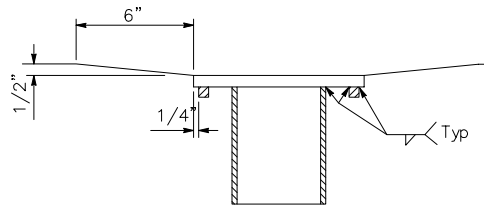
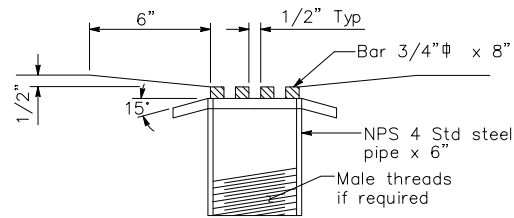


PLAN



SECTION G-G



SECTION H-H

**NOTE:**

Galvanize drain  
after fabrication.

PEDESTRIAN STRUCTURE DRAIN DETAIL 7-5



**LBIW Inc.**

2020 WEST 14TH STREET  
LONG BEACH, CA. 90813  
Tel No. : (562) 432.5451  
Fax No. : (562) 432.5929  
www.lbiw.com

**PRODUCT NUMBER**

**PEDESTRIAN  
STRUCTURE  
DRAIN**

GALVANIZED

**ESTIMATED WEIGHT**

**SPECIFICATION**

CALTRANS B7-5

**DESIGNATES MACHINED**

**DRAWN**

**DATE**

03-25-09

**REFERENCE INFORMATION**

SECTION 08