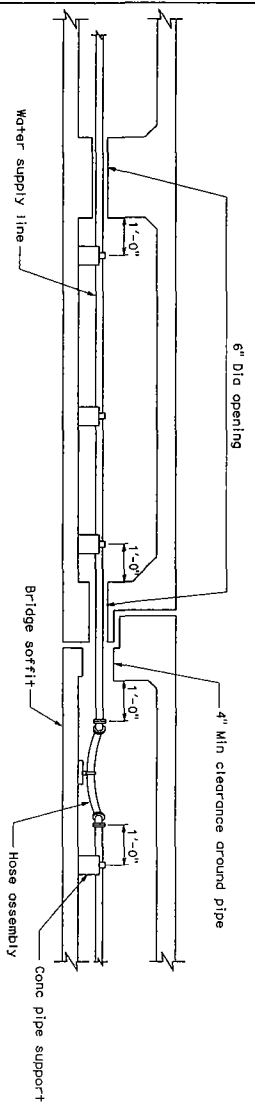
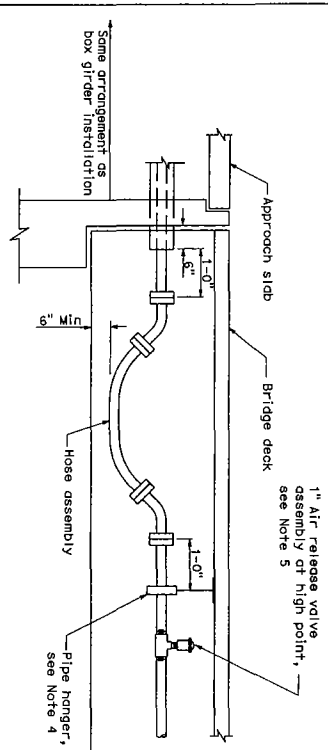


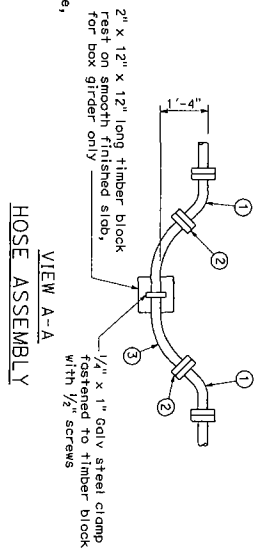
BOX GIRDER INSTALLATION



PIPE INSTALLATION AT HINGE



INSTALLATION FOR OTHER STRUCTURE TYPES

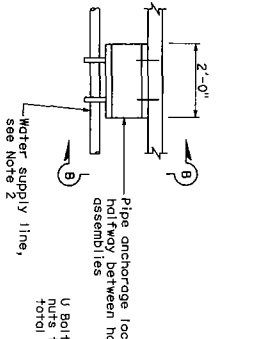


NUMBERED ITEM

- ① 45° Flanged elbow with insulated flange connection
- ② Flanged hose fitting
- ③ Hose 6'-6" in length (size shall be same as pipe)

NOTES:

- 1. Extend pipe 5'-0" beyond the edge of shoulder or as shown on bridge plans. Terminate in a pull box as shown on Standard Plan B14-5, Detail B.
- 2. Water supply line shall be installed parallel to the bridge soffit or deck.
- 3. For concrete pipe support, pipe shall be tightly clamped to the pipe support located halfway between hose assemblies. At all other supports, pipe clamp shall be shimmed with steel washer plate to provide 1/4" clearance between pipe and clamp.
- 4. Maximum spacing between pipe hangers or supports shall be 10'-0" unless otherwise detailed on the plans.
- 5. Install air release valve using threaded tee or pipe saddle.
- 6. Openings through diaphragm and bent caps shall be 8" diameter unless otherwise detailed on the plans.
- 7. For details of pipe hanger and concrete pipe support see Standard Plan B14-5.



VIEW B-B

WATER SUPPLY LINE (BRIDGE) (PIPE SIZES LESS THAN 4")

STATE OF CALIFORNIA
DEPARTMENT OF TRANSPORTATION

B14-4

LIST COUNTY	ROUTE	POST MILES	SHEET TOTALS
		TOTAL PROJECT	NO. SHEETS
REGISTERED MECHANICAL ENGINEER MAY 1, 2006 PLANS APPROVAL DATE MOO T. RYAN REGISTERED PROFESSIONAL ENGINEER No. 52025 State of California The State of California or its officers or agents shall not be responsible for the accuracy or completeness or any part of the drawings or specifications of any part of the project. To get the full story visit us on the Web: www.dts.gov			